

PLATE 144

SECTION No. 8

BEAVER TWP.

OFFICE OF COUNTY ENGINEER
MAHONING COUNTY COURT HOUSE
YOUNGSTOWN, OHIO

GIS Department

Scanned: 1/3/21



SCALE
1" = 100'

133

LEGEND

- (44) PLATE NUMBER
- 4700 HOUSE NUMBERING GRID
- 4170 HOUSE NUMBER
- (2) OR (2.2) PERMANENT PARCEL NO.

143

145

D.D. BEATTY
(8)
7.5 AC

P&D.J. SUSZCZYNSKI
5.01 AC.

M.G. & C.M. PACAK
5.01 AC.

(7)
A. & R. COLAIZZI

(6)

(5)

W. McLaughlin
5.01 AC.
(3)

8.97 AC.

281.25'

254.77'

280.25'

266.22'

234.39'

234.39'

234.39'

169

C.L. Johns
10.65 A.
(4)

1148.76'
1324.28'

J. M. & J. CUNNINGHAM
(2.07)
8.551 AC

1324.40'

G. & R. DIVINCENZO
(2.05)
7.746 AC

1324.51'

(2.06)
8.522 AC

1324.62'

T.E. & P.L. ROLLER
(2.03)
8.077 AC

1324.73'

C.A. ALLEN
(2.02)
7.128 AC

1324.83'

J. VITULLO
(2.01)
7.129 AC

1324.93'

E. M. ROHAN
(2.04)
7.129 AC

1325.03'

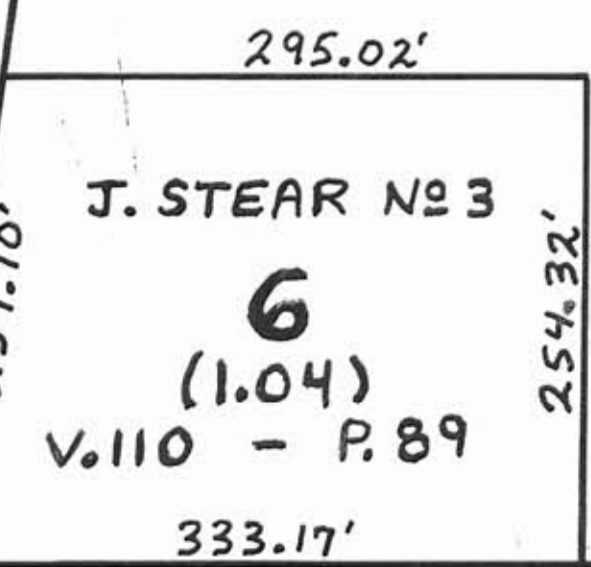
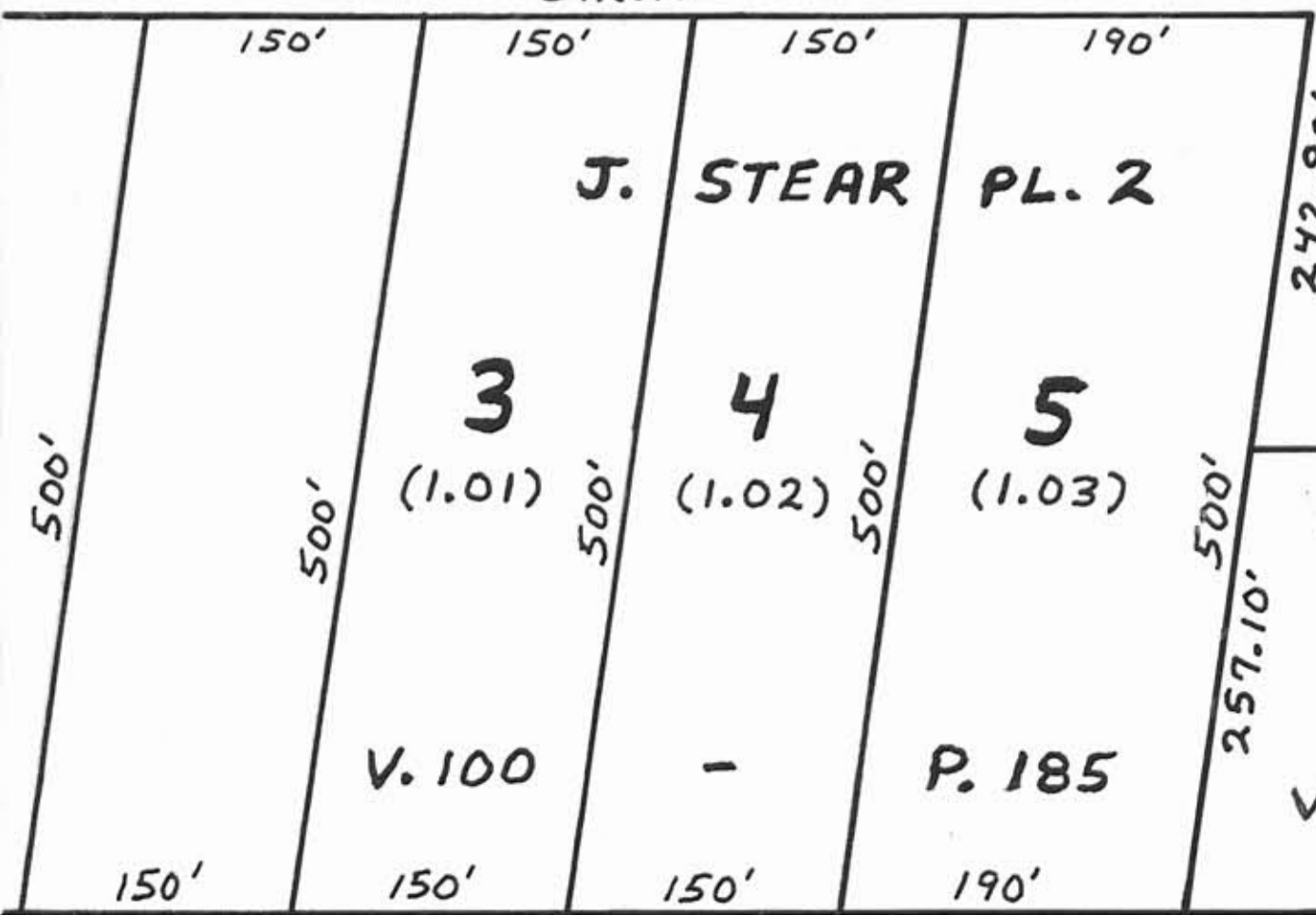
10800

10900

11000

J. STEAR
(1)
13.118 AC

872.15'



MIDDLETOWN ROAD

60'

SEC. 8
SEC. 17

SEC. 8
SEC. 9

3500

3400

3300

3200

3100