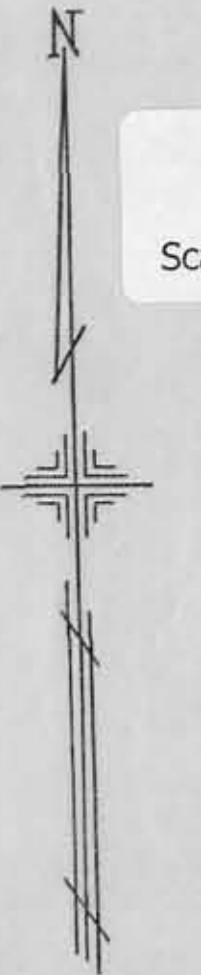


OFFICE OF COUNTY ENGINEER
MAHONING COUNTY COURT HOUSE
YOUNGSTOWN, OHIO

GIS Department

2/28/08

Scanned



SCALE
1" = 100'

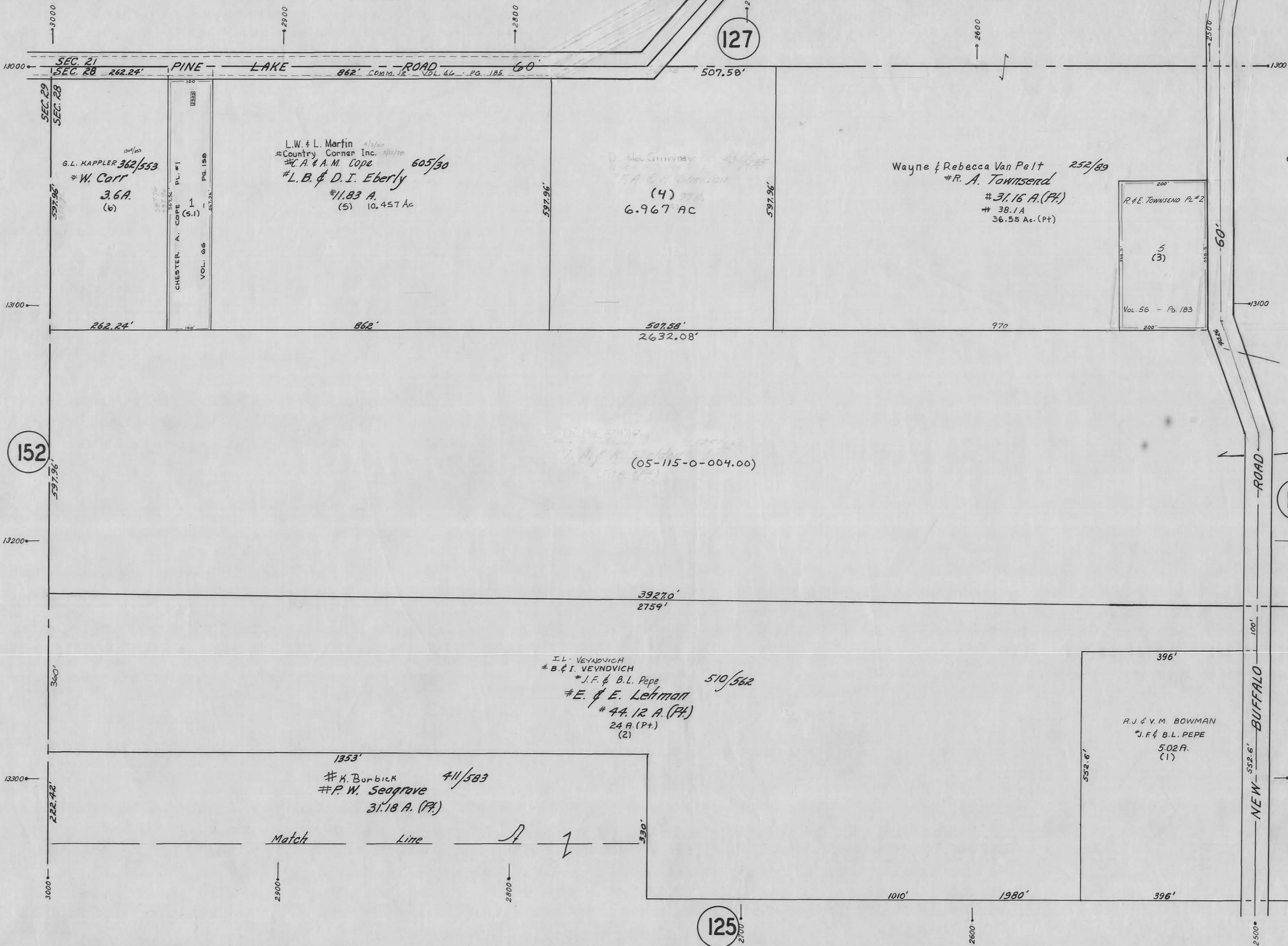
LEGEND

(44) PLATE NUMBER

→ 4700 HOUSE NUMBERING GRID

[470] HOUSE NUMBER

(2) OR (2.2) PERMANENT PARCEL NO.



127

152

125

115

44

470

13300

NEW BUFFALO ROAD

PINE LAKE ROAD

Match Line

(4)
6.967 AC

5
(3)

(05-115-0-004.00)

39270'
2759'

510/562

I.L. VEYNOVICH
B. & I. VEYNOVICH
* J.F. & B.L. PEPE
E. & E. LEHMAN
44.12 A. (Pt.)
24 A. (Pt.)
(2)

1353'
K. BURBICK
P.W. SEAGRAVE
4/1/583
31.18 A. (Pt.)

R.J. & V.M. BOWMAN
* J.F. & B.L. PEPE
5.02 A.
(1)

Wayne & Rebecca Van Pelt
R.A. TOWNSEND
252/89
31.16 A. (Pt.)
38.1 A
36.55 Ac. (Pt.)

L.W. & L. Martin
Country Corner Inc.
* C.A. & A.M. COPE
605/30
L.B. & D.I. EBERLY
11.83 A.
(5) 10.457 Ac

G.L. KAPPLER 362/553
W. Carr
3.6 A.
(6)

CHESTER A. COPE PL. #1
VOL. 66
PG. 158
1
(S.1)