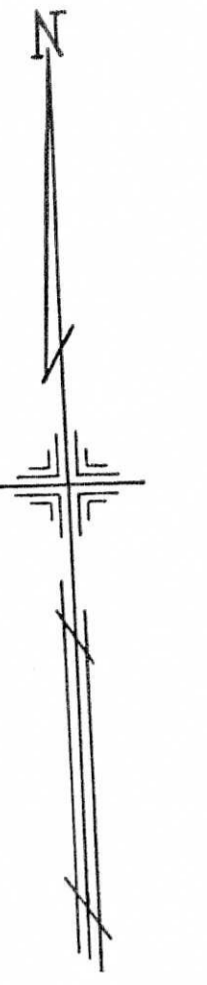


PLATE 107

SECTION No. 9

BEAVER TWP.

OFFICE OF COUNTY ENGINEER  
MAHONING COUNTY COURT HOUSE  
YOUNGSTOWN, OHIO



SCALE  
1" = 100'

LEGEND

44 PLATE NUMBER

→ 4300 HOUSE NUMBERING GRID

4202 HOUSE NUMBER

(2) OR (2.2) PERMANENT PARCEL NO.

106

134

98

108

L. T. CULLAR, FAM. TR.  
(6)  
23.58 AC

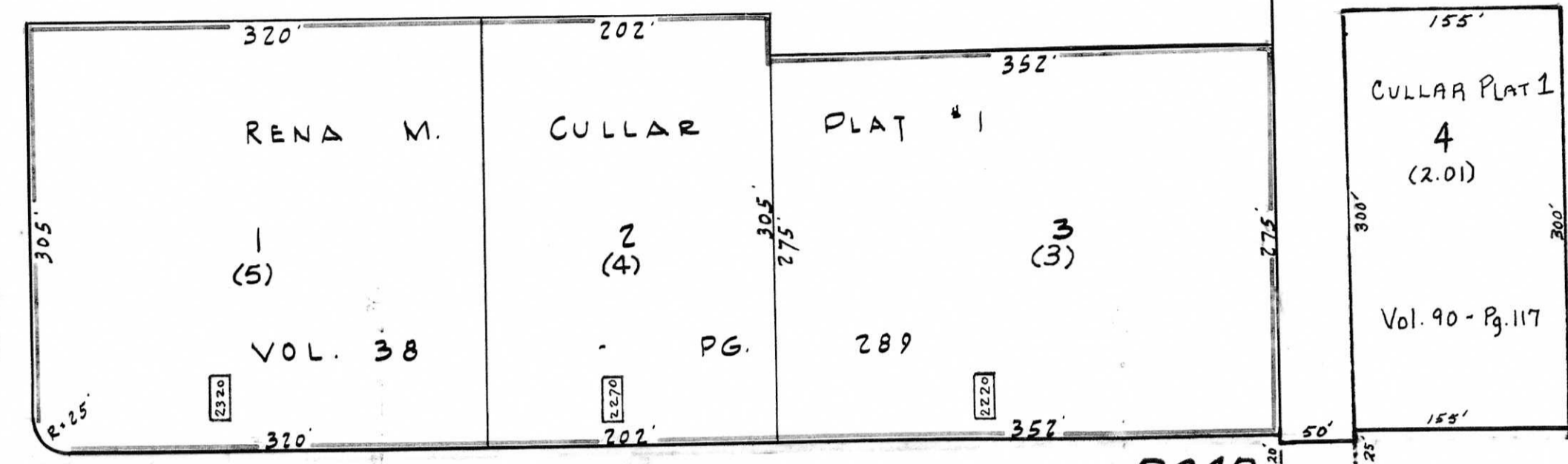
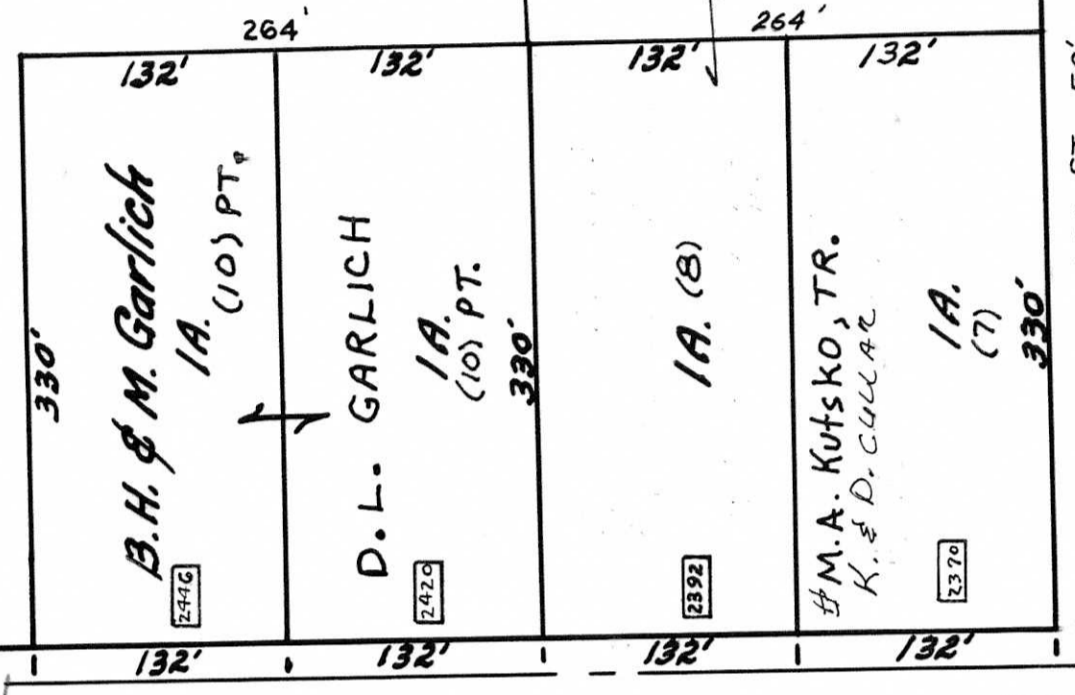
(2)  
28.843 AC

C. D. ROSE  
# C. D. & L. ROSE  
(11)  
15.32 AC

E. V. RIFFLE  
(9)  
6.86 AC

143.72' D.

143.72' D.  
143.72' D.



RES. FOR FUTURE ST. 50'

LYNN ROAD 3358.2 (Survey) 3288.78 (Deed)

C. L. & V. L. WILLIAM\$  
(12)  
100 AC

→ 2200

→ 2400

→ 2300

→ 2200

→ 2000

→ 2000

→ 10400

→ 10500

→ 10600

ROAD - BASSINGER - 1320'

1168.5'

288' 22.4' (1)

40'

40'