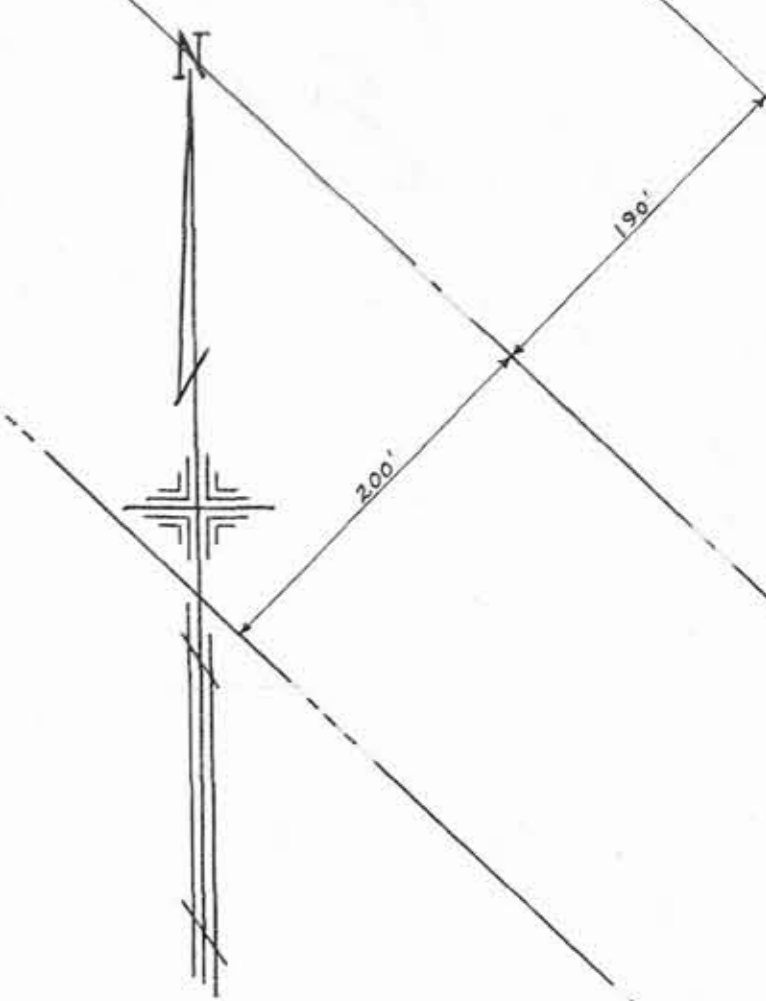


PLATE 42

SECTION No. 11

BEAVER TWP.

OFFICE OF COUNTY ENGINEER  
MAHONING COUNTY COURT HOUSE  
YOUNGSTOWN, OHIO



SCALE  
1" = 100'

GIS Department  
Scanned

LEGEND

44 PLATE NUMBER

4300 HOUSE NUMBERING GRID

4202 HOUSE NUMBER

(1) PERMANENT PARCEL NO.

41

10700

10800

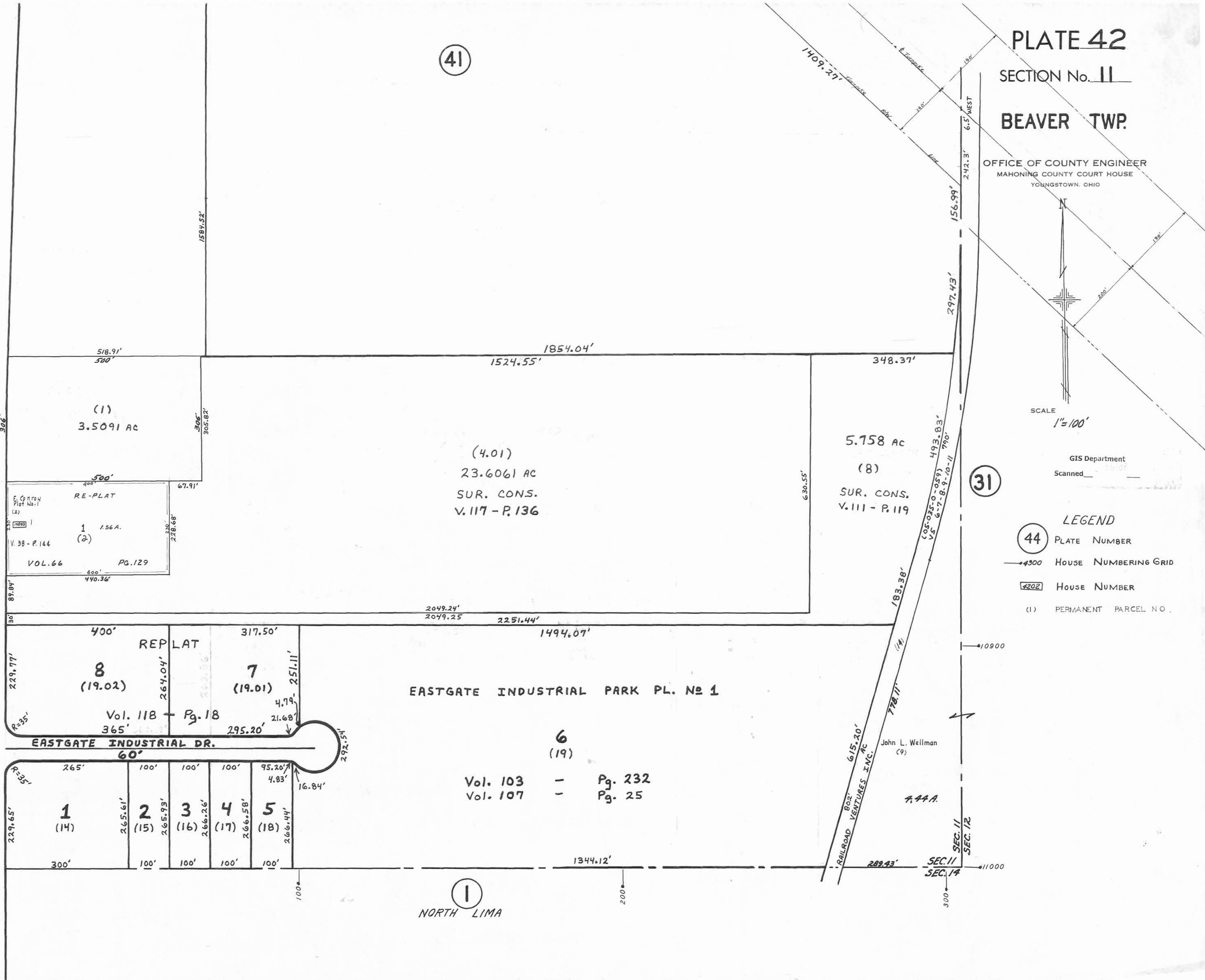
10900

11000

EXT.

ST.

MARKET



61

31

1  
NORTH LIMA

RAILROAD  
802'  
VENTURES INC.  
615'-20'

John L. Wellman  
(9)

4.44 A.

SEC. 11  
SEC. 12  
SEC. 14

(1)  
3.5091 AC

(4.01)  
23.6061 AC  
SUR. CONS.  
V. 117 - P. 136

5.758 AC  
(8)  
SUR. CONS.  
V. 111 - P. 119

8  
(19.02)

7  
(19.01)

6  
(19)

EASTGATE INDUSTRIAL DR.  
60'

EASTGATE INDUSTRIAL PARK PL. No 1

Vol. 103 - Pg. 232  
Vol. 107 - Pg. 25

1  
(14)

2  
(15)

3  
(16)

4  
(17)

5  
(18)

11000

300

200

100