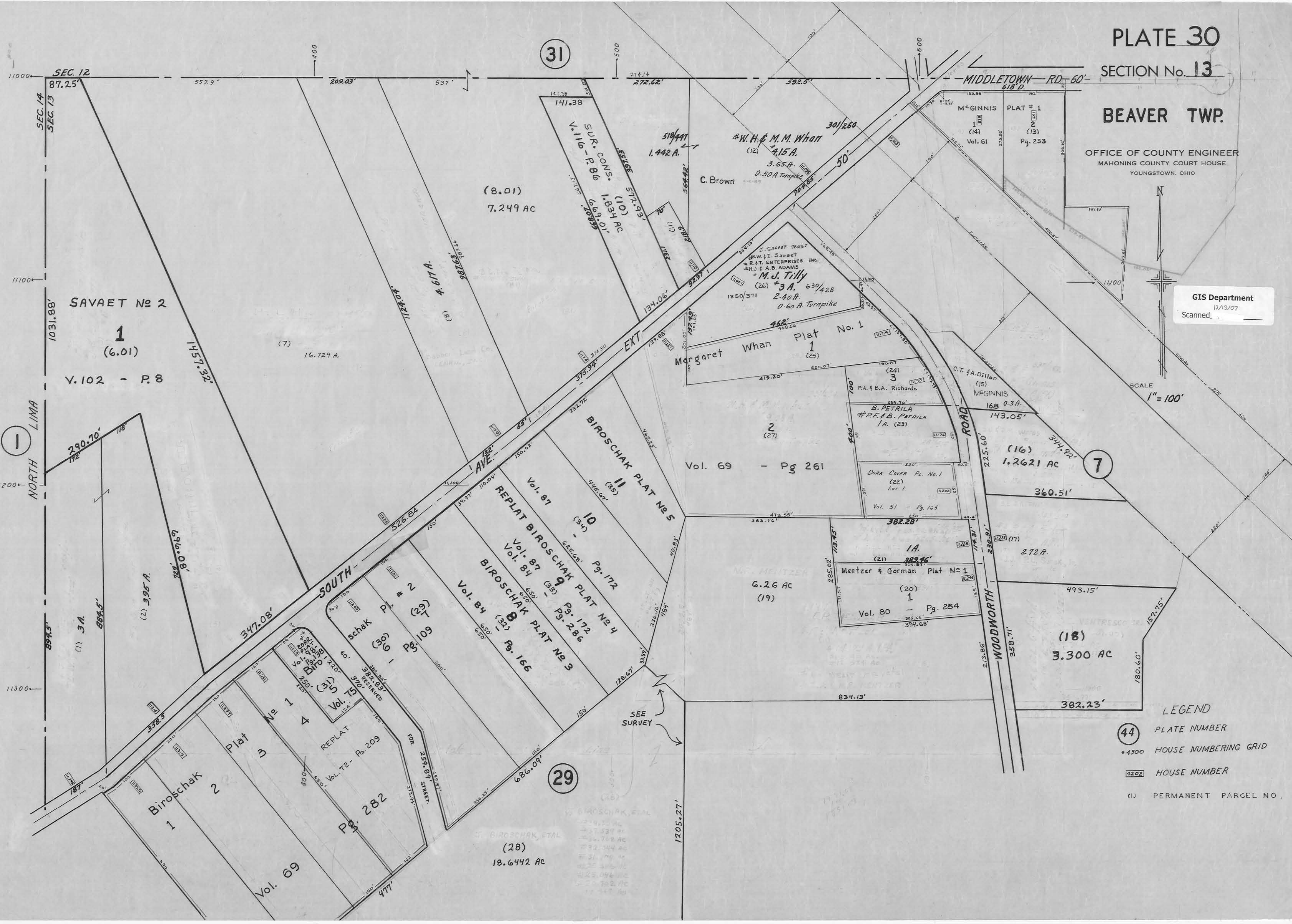


OFFICE OF COUNTY ENGINEER  
MAHONING COUNTY COURT HOUSE  
YOUNGSTOWN, OHIO

GIS Department  
12/13/07  
Scanned

SCALE  
1" = 100'



LEGEND

- (44) PLATE NUMBER
- 4300 HOUSE NUMBERING GRID
- 4202 HOUSE NUMBER
- (1) PERMANENT PARCEL NO.

31

29

7

SEC. 12  
87.25'  
557.9'  
209.03'  
537'

SAVAET No 2  
1  
(6.01)  
V.102 - P.8

NORTH LIMA  
1031.88'

894.5'  
884.5'  
395 A.

11300  
11100  
200  
11000

141.38  
SUR. CONS. V.116 - P.86  
1.834 AC  
6,068.01'  
10889

(8.01)  
7.249 AC  
4.617 A.  
16.729 A.

134.06'  
134.06'  
134.06'  
134.06'

Vol. 87  
REPLAT BIROSCHAK PLAT No 4  
Vol. 84  
BIROSCHAK PLAT No 3  
Vol. 84  
BIROSCHAK PLAT No 2  
Vol. 84  
BIROSCHAK PLAT No 1

Vol. 69  
18.6442 AC  
477'

30/260  
50'  
#W.H. & M.M. Whan  
(12) 4.15 A.  
3.65 A.  
0.50 A Turnpike  
C. Brown  
519/447  
1.442 A.

Margaret Whan  
Plat No. 1  
1  
(25)  
419.20'  
620.07'

Vol. 69 - Pg 261  
2  
(27)  
143.05'  
1.2621 AC  
360.51'

Vol. 51 - Pg. 165  
DORA COVER PL. No. 1  
Lot 1  
Vol. 80 - Pg. 284  
Mentzer & Gorman Plat No 1  
1  
(20)  
389.46'

Vol. 80  
382.23'  
493.15'  
157.75'  
180.60'  
358.71'  
2.13.86'  
230.91'

SEE SURVEY