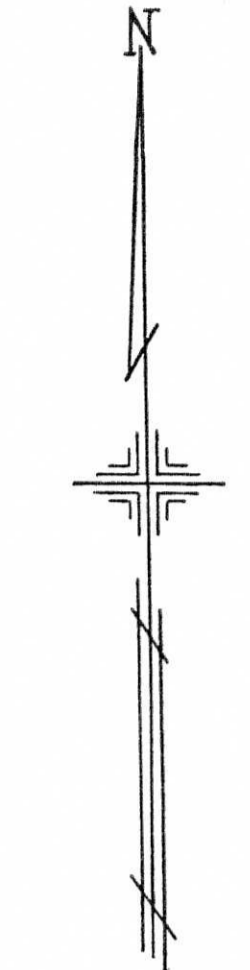


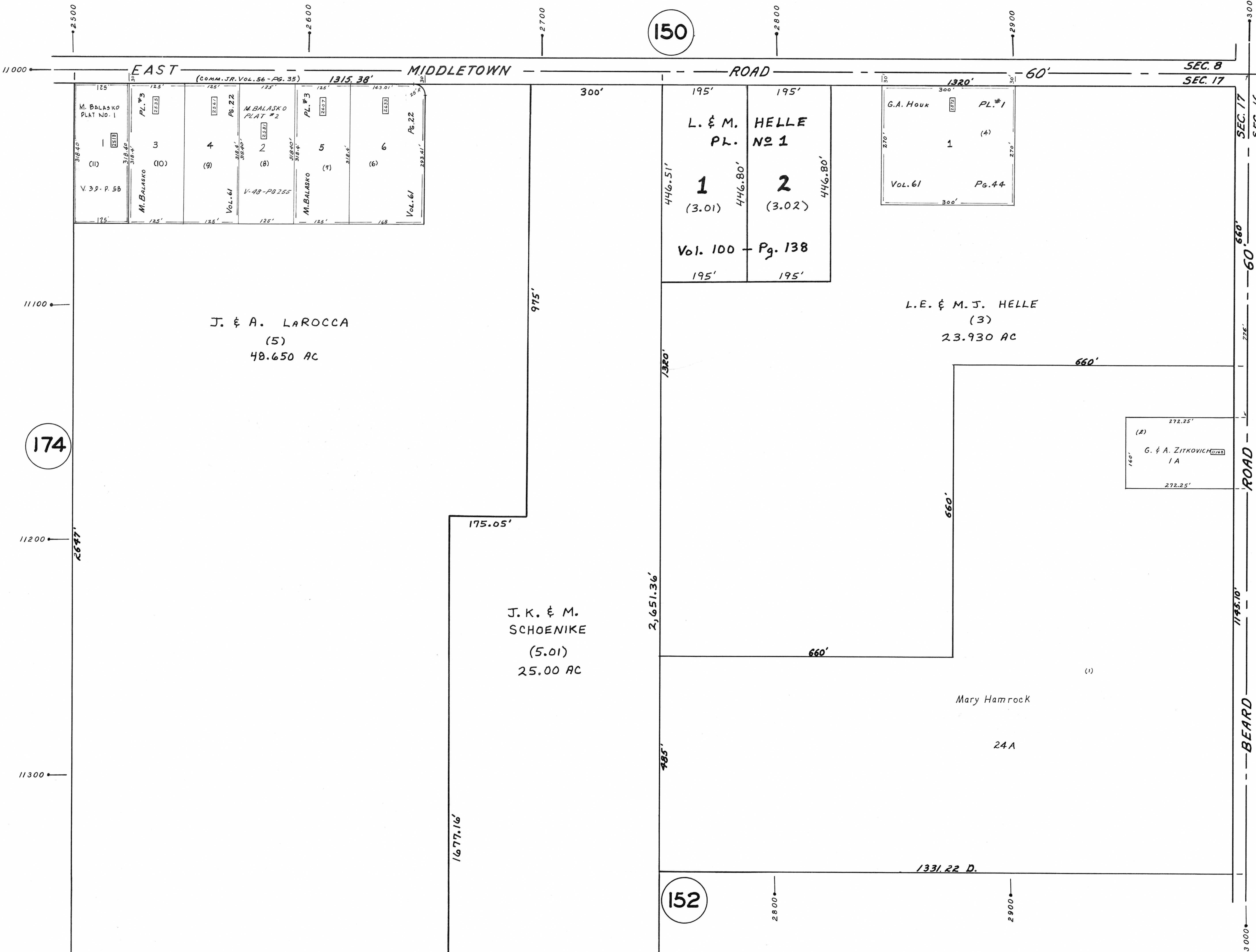
OFFICE OF COUNTY ENGINEER  
MAHONING COUNTY COURT HOUSE  
YOUNGSTOWN, OHIO



SCALE  
1" = 100'

LEGEND

- 138 PLATE NUMBER
- 44 HOUSE NUMBERING GRID
- 4700 HOUSE NUMBERING GRID
- 4170 HOUSE NUMBER
- (2.) OR (2.2) PERMANENT PARCEL NO.



150

174

152

EAST

MIDDLETOWN ROAD

SEC. 17  
SEC. 16

ROAD  
BEARD

(COMM. JR. VOL. 56 - PG. 35)

318.40'	318.40'	318.40'	318.40'	318.40'	318.40'
PL. #3	PL. #3	PL. #3	PL. #3	PL. #3	PL. #3
3	4	2	5	6	
(11)	(9)	(8)	(7)	(6)	
V. 35 - P. 56	Vol. 61	V. 48 - PG 255	M. BALASKO	Vol. 22	Vol. 61

L. & M. HELLE  
PL. NO 1

1 (3.01)      2 (3.02)

446.80'      446.80'

Vol. 100 - Pg. 138

195'      195'

G.A. Houk      PL. #1

1 (4)

Vol. 61      Pg. 44

300'

J. & A. LARocca  
(5)  
48.650 AC

L.E. & M.J. HELLE  
(3)  
23.930 AC

J.K. & M. SCHOENIKE  
(5.01)  
25.00 AC

Mary Hamrock  
24A

(2)  
G. & A. ZITKOVICH  
1A

1331.22 D.

2500  
2600  
2700  
2800  
2900  
3000

11000  
11100  
11200  
11300  
3000