

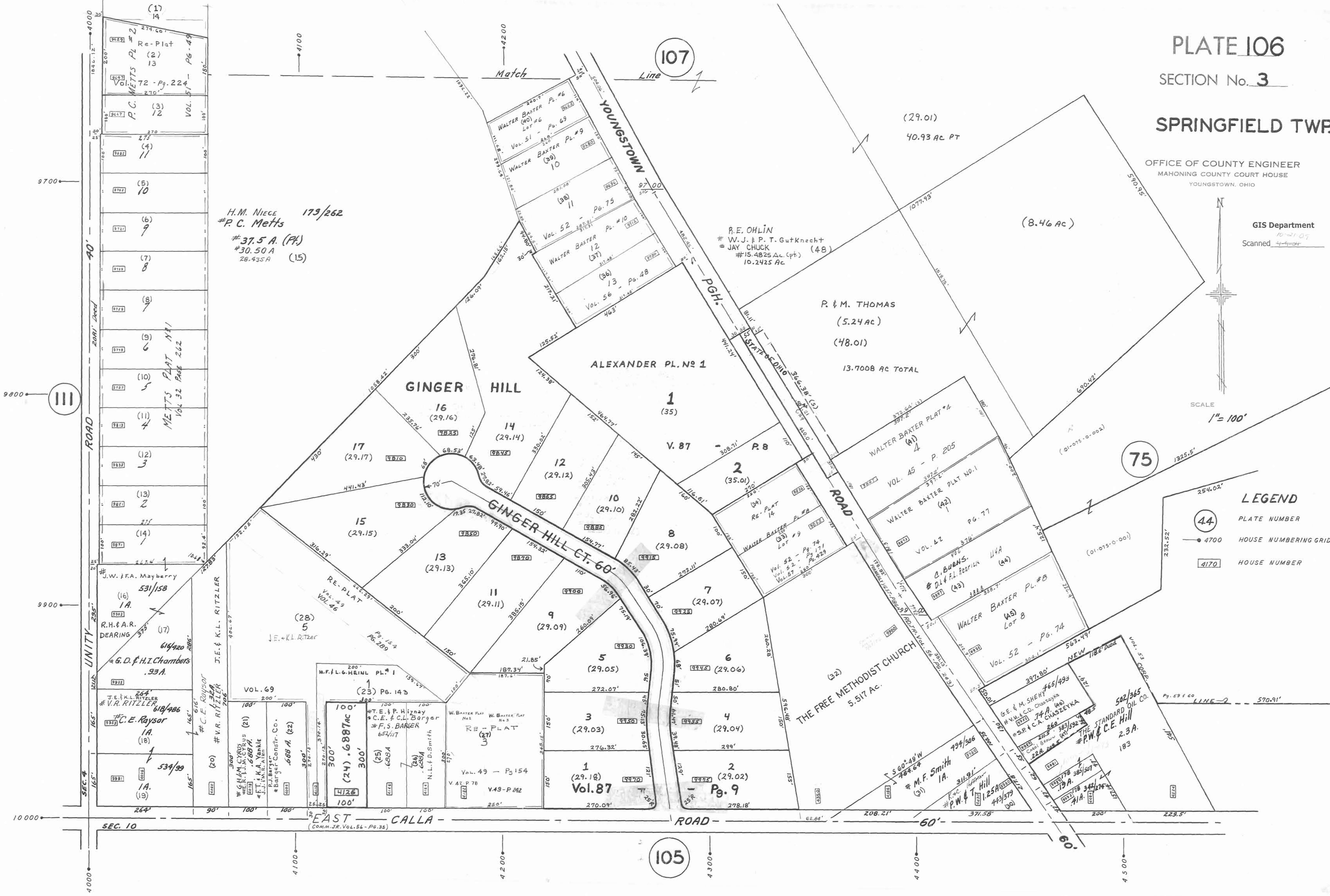
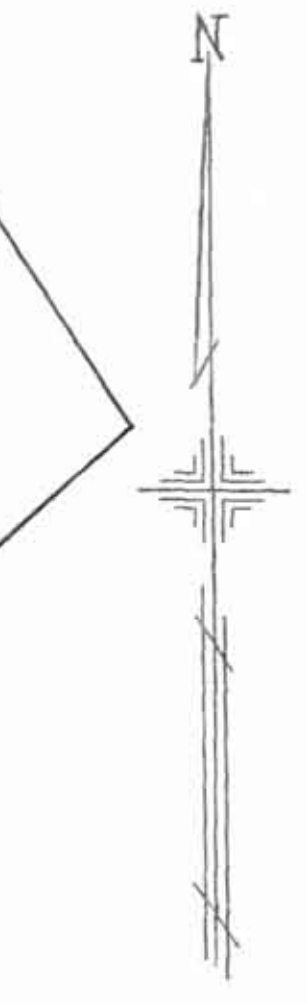
PLATE 106

SECTION No. 3

SPRINGFIELD TWP

OFFICE OF COUNTY ENGINEER
MAHONING COUNTY COURT HOUSE
YOUNGSTOWN, OHIO

GIS Department
Scanned 10-21-07



- LEGEND**
- (44) PLATE NUMBER
 - 4700 HOUSE NUMBERING GRID
 - 4170 HOUSE NUMBER

H.M. NIECE 179/262
#P.C. Metts
#37.5 A. (Pt.)
#30.50 A
28.435 A (15)

R.E. OHLIN
#W.J. & P.T. Gutknecht
#JAY CHUCK
#15.4825 Ac. (pt.) (48)
10.2425 Ac

R. & M. THOMAS
(5.24 Ac)
(48.01)
13.7008 AC TOTAL

(8.46 Ac)

107

105

75

ROAD

UNITY

SEC. 10

EAST CALLA ROAD

ROAD

THE FREE METHODIST CHURCH
5.517 AC.

ALEXANDER PL. NO 1

GINGER HILL

GINGER HILL CT. 60'

WALTER BAXTER PL. #6
Vol. 51 - Pg. 69
WALTER BAXTER PL. #9
Vol. 52 - Pg. 75
WALTER BAXTER PL. #10
Vol. 56 - Pg. 48

WALTER BAXTER PLAT #4
VOL. 45 - P. 205
WALTER BAXTER PLAT NO. 1
VOL. 42 - P. 77

WALTER BAXTER PL. #B
Lot 8
Vol. 52 - Pg. 74

WALTER BAXTER PL. #A
Lot 8
Vol. 52 - Pg. 74

THE STANDARD OIL CO.
#P.W. & C.E. Hill
2.3 A.
183

(17)
14
274.60'
Re-Plat
(2)
13
72 - Pg. 224
VOL. 51
P.C. METTS PL. #2
VOL. 51
Pg. 49

(3)
12
270'
VOL. 51
P.C. METTS PL. #2

(4)
11
270'
VOL. 51
P.C. METTS PL. #2

(5)
10
270'
VOL. 51
P.C. METTS PL. #2

(6)
9
270'
VOL. 51
P.C. METTS PL. #2

(7)
8
270'
VOL. 51
P.C. METTS PL. #2

(8)
7
270'
VOL. 51
P.C. METTS PL. #2

(9)
6
270'
VOL. 51
P.C. METTS PL. #2

(10)
5
270'
VOL. 51
P.C. METTS PL. #2

(11)
4
270'
VOL. 51
P.C. METTS PL. #2

(12)
3
270'
VOL. 51
P.C. METTS PL. #2

(13)
2
270'
VOL. 51
P.C. METTS PL. #2

(14)
1
270'
VOL. 51
P.C. METTS PL. #2

(15)
0
270'
VOL. 51
P.C. METTS PL. #2

(16)
0
270'
VOL. 51
P.C. METTS PL. #2

(17)
0
270'
VOL. 51
P.C. METTS PL. #2

(18)
0
270'
VOL. 51
P.C. METTS PL. #2

(19)
0
270'
VOL. 51
P.C. METTS PL. #2

(20)
0
270'
VOL. 51
P.C. METTS PL. #2

(21)
0
270'
VOL. 51
P.C. METTS PL. #2

(22)
0
270'
VOL. 51
P.C. METTS PL. #2

(23)
0
270'
VOL. 51
P.C. METTS PL. #2

(24)
0
270'
VOL. 51
P.C. METTS PL. #2

(25)
0
270'
VOL. 51
P.C. METTS PL. #2

(26)
0
270'
VOL. 51
P.C. METTS PL. #2

(27)
0
270'
VOL. 51
P.C. METTS PL. #2

(28)
0
270'
VOL. 51
P.C. METTS PL. #2

(29)
0
270'
VOL. 51
P.C. METTS PL. #2

(30)
0
270'
VOL. 51
P.C. METTS PL. #2

(31)
0
270'
VOL. 51
P.C. METTS PL. #2

(32)
0
270'
VOL. 51
P.C. METTS PL. #2

(33)
0
270'
VOL. 51
P.C. METTS PL. #2

(34)
0
270'
VOL. 51
P.C. METTS PL. #2

(35)
0
270'
VOL. 51
P.C. METTS PL. #2

(36)
0
270'
VOL. 51
P.C. METTS PL. #2

(37)
0
270'
VOL. 51
P.C. METTS PL. #2

(38)
0
270'
VOL. 51
P.C. METTS PL. #2

(39)
0
270'
VOL. 51
P.C. METTS PL. #2

(40)
0
270'
VOL. 51
P.C. METTS PL. #2

(41)
0
270'
VOL. 51
P.C. METTS PL. #2

(42)
0
270'
VOL. 51
P.C. MET