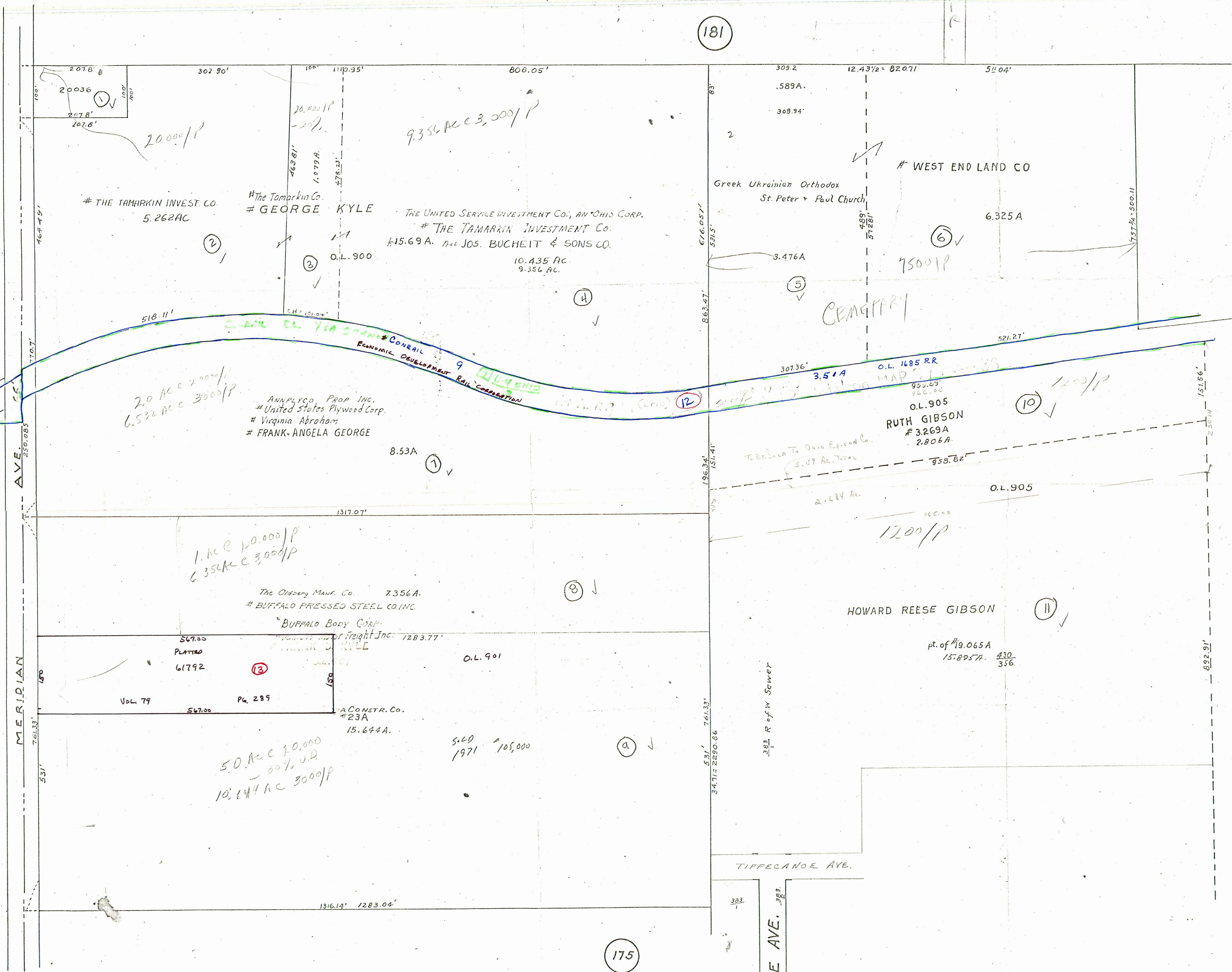


181



MERIDIAN AVE.

OSBORNE AVE.

TIPPECANOE AVE.

2078  
20036  
2078  
2078

302.90'

100'

1110.35'

808.05'

309.2'

12.43 1/2 = 820.71'

511.04'

589A.

308.94'

2

6325A

# THE TAMARKIN INVEST. CO.  
5.262 AC

# The Tamarkin Co.  
# GEORGE KYLE

THE UNITED SERVICE INVESTMENT CO., AN OHIO CORP.  
# THE TAMARKIN INVESTMENT CO.  
#15.69A. 1242 JOS. BUCHEIT & SONS CO.  
10.435 AC.  
9.356 AC.

# WEST END LAND CO

Greek Ukrainian Orthodox  
St. Peter & Paul Church

7500/P

CEMETERY

518.11'

2.0 AC @ 2,000/P  
6.532 AC @ 3,000/P

ANNPLYCO PROP INC.  
# United States Plywood Corp.  
# Virginia Abraham  
# FRANK-ANGELA GEORGE

8.53A

CONRAIL ECONOMIC DEVELOPMENT RAIL CORRIDOR

3.51A

O.L. 1685 RR

O.L. 905  
RUTH GIBSON  
# 3.269A  
2.806A

1200/P

HOWARD REESE GIBSON

pt. of #19.065A  
15.895A. 430/356

1. AC @ 10,000/P  
6.354 AC @ 3,000/P

The Oldberg Mfg. Co. 7.356A.  
# BUFFALO PRESSED STEEL CO. INC.  
BUFFALO BODY CORP.  
# BUFFALO PRESSED STEEL CO. INC.  
#1283.77'

O.L. 901

567.00  
PLATTD  
61792

Vol. 79 Pg. 289

CONSTR. CO.  
#23A  
15.644A.

5.0 AC @ 10,000  
- 30% U.P.  
10.147 AC @ 3,000/P

5.20  
1971 105,000

383 R of W Sewer

174

174

175