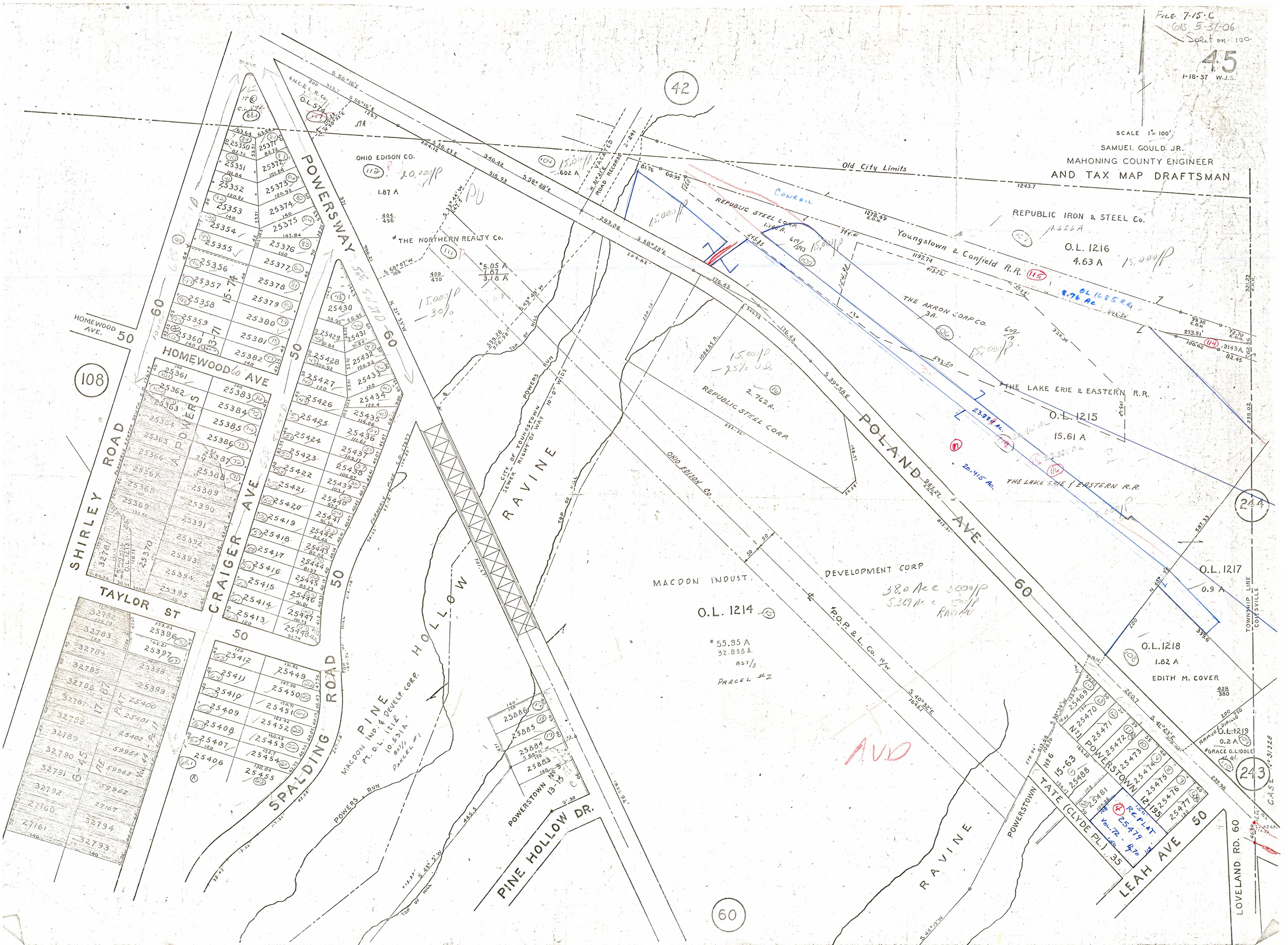


File 7-15-C
OLS 5-31-06
Split on 100
4.5
1-18-37 W.J.S.

SCALE 1" = 100'
SAMUEL GOULD, JR.
MAHONING COUNTY ENGINEER
AND TAX MAP DRAFTSMAN



42

108

60

244

243

50

60

50

50

50

13-15

60

60

50

60

Table of lot numbers along Powersway:

25350	25371
25351	25372
25352	25373
25353	25374
25354	25375
25355	25376
25356	25377
25357	25378
25358	25379
25359	25380
25360	25381
25361	25382
25362	25383
25363	25384
25364	25385
25365	25386
25366	25387
25367	25388
25368	25389
25369	25390
25370	25391
25371	25392
25372	25393
25373	25394
25374	25395

Table of lot numbers along Craiger Ave:

25383	25403
25384	25404
25385	25405
25386	25406
25387	25407
25388	25408
25389	25409
25390	25410
25391	25411
25392	25412
25393	25413
25394	25414
25395	25415
25396	25416
25397	25417
25398	25418
25399	25419
25400	25420
25401	25421
25402	25422
25403	25423
25404	25424
25405	25425
25406	25426
25407	25427
25408	25428
25409	25429
25410	25430
25411	25431
25412	25432
25413	25433
25414	25434
25415	25435
25416	25436
25417	25437
25418	25438
25419	25439
25420	25440
25421	25441
25422	25442
25423	25443
25424	25444
25425	25445
25426	25446
25427	25447
25428	25448
25429	25449
25430	25450
25431	25451
25432	25452
25433	25453
25434	25454
25435	25455

Table of lot numbers along Taylor St:

32782	25396
32783	25397
32784	25398
32785	25399
32786	25400
32787	25401
32788	25402
32789	25403
32790	25404
32791	25405
32792	25406
27160	27167
27161	27194
27162	27193

Table of lot numbers along Spalding Road:

25412	25449
25411	25450
25410	25451
25409	25452
25408	25453
25407	25454
25406	25455

Table of lot numbers near Pine Hollow Dr:

25886	25885
25884	25883
25882	25881

REPUBLIC IRON & STEEL CO.
A. 626 A
O.L. 1216
4.63 A
15,000 P

REPUBLIC STEEL CORP.
1.498 A
2.762 A
15,000 P
- 25% J.D.

O.L. 1214
55.95 A
32.838 A
857/3
PARCEL #2

DEVELOPMENT CORP
38.0 A c 5000 P
5.349 A c 500 P
RAVINE

O.L. 1218
1.82 A
EDITH M. COVER

RE-FLAT
25479
25478
25477
25476
25475
25474
25473
25472
25471
25470
25469
25468
25467
25466
25465
25464
25463
25462
25461
25460
25459
25458
25457
25456
25455
25454
25453
25452
25451
25450
25449
25448
25447
25446
25445
25444
25443
25442
25441
25440
25439
25438
25437
25436
25435
25434
25433
25432
25431
25430
25429
25428
25427
25426
25425
25424
25423
25422
25421
25420
25419
25418
25417
25416
25415
25414
25413
25412
25411
25410
25409
25408
25407
25406
25405
25404
25403
25402
25401
25400
25399
25398
25397
25396
25395
25394
25393
25392
25391
25390
25389
25388
25387
25386
25385
25384
25383
25382
25381
25380
25379
25378
25377
25376
25375
25374
25373
25372
25371
25370
25369
25368
25367
25366
25365
25364
25363
25362
25361
25360
25359
25358
25357
25356
25355
25354
25353
25352
25351
25350