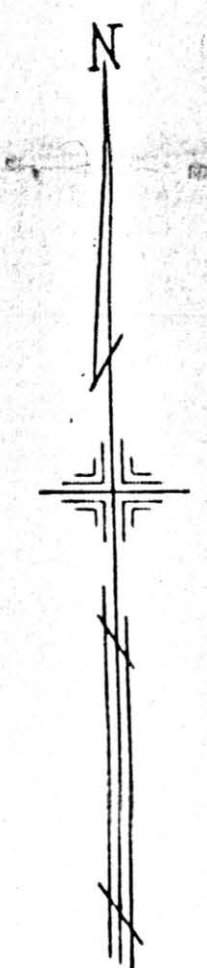


655 7-5-06

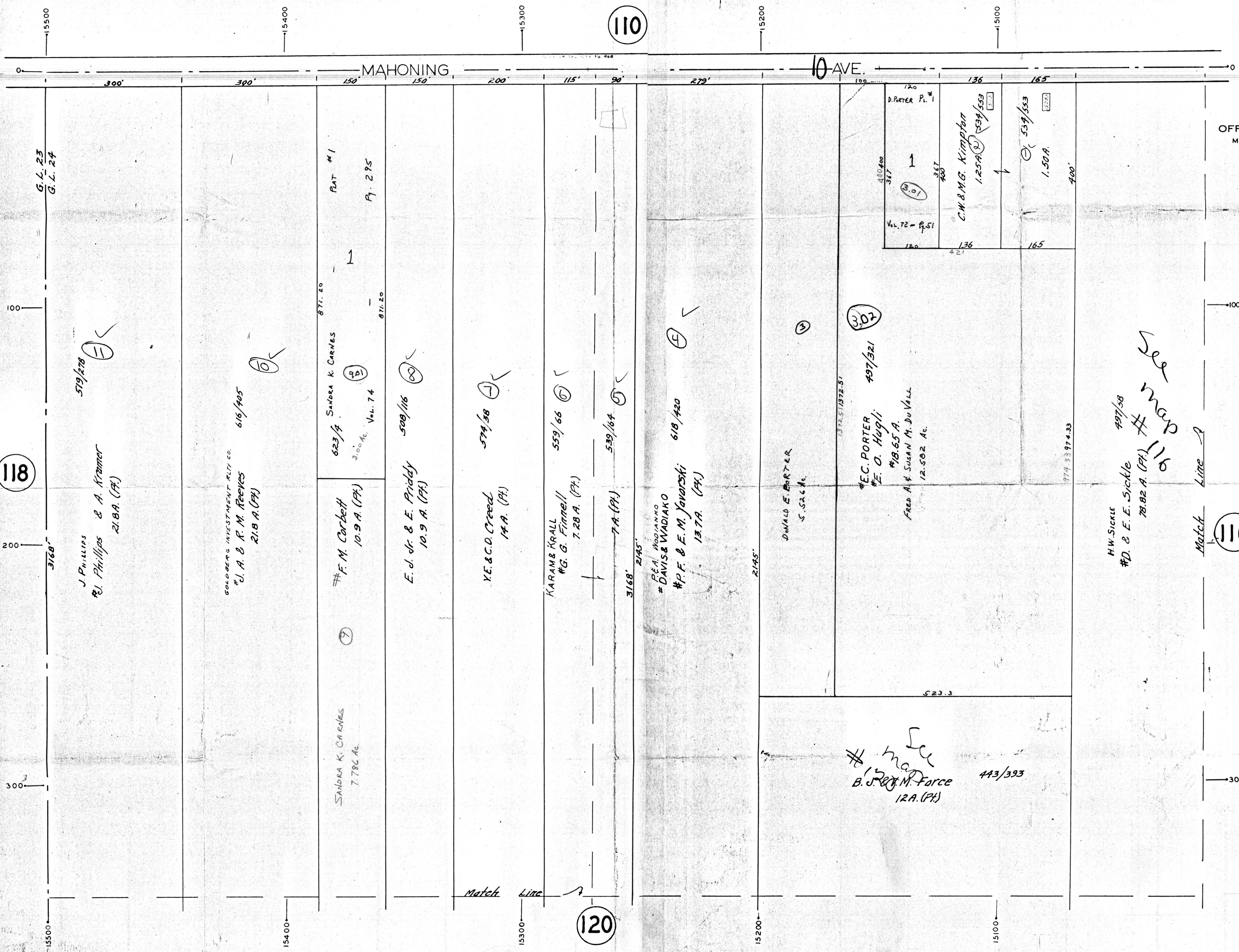
OFFICE OF COUNTY ENGINEER  
MAHONING COUNTY COURT HOUSE  
YOUNGSTOWN, OHIO



SCALE  
1" = 100'  
REVISED - MARCH, 1951

LEGEND

- (44) PLATE NUMBER
- 4700 HOUSE NUMBERING GRID
- HOUSE NUMBER



118

110

120

MAHONING AVE.

300' 300' 150' 150' 200' 115' 90' 279' 120' 136' 165'

100

200

300

100

200

300

Match Line

Match Line

G.L. 23  
G.L. 24

519/478

J. Phillips & A. Kramer  
21.8 A. (PA)

GOLDBERG INVESTMENT REIT CO.  
#1 A & R. M. Reeves  
21.8 A. (PA)

616/405

(B)

SANDRA K. CARNES  
7.78 C. AC.

(7)

# F. M. Corbett  
10.9 A. (PA)

871.20

SANDRA K. CARNES  
3.00 AC. Vol. 74

PLAT #1

1

Pg. 295

871.20

E. J. Jr. & E. Priddy  
10.9 A. (PA)

508/116

(8)

Y.E. & C.O. Creed  
14 A. (PA)

579/58

(J)

KARAM & KRALL  
# G. G. Fimmel  
7.28 A. (PA)

553/66

(6)

F.A. & M. WADIAKO  
# P.F. & E.M. Jaworski  
13.7 A. (PA)

539/164

(5)

DONALD E. PORTER  
5.52 C. AC.

618/420

(E)

# See map  
B. J. M. Force  
12 A. (PA)

443/393

# E.C. PORTER  
# F.O. Hugli  
# B.65 A.  
FRED A. & SUSAN M. DU VALL  
12.502 AC.

497/521

(3.02)

D. PORTER Pl. #1  
1  
Vol. 72 - P. 51

C.W. & M.G. Kimpfman  
1.25 A. (PA)

136  
165  
1.50 A.

539/553

(3)

H.W. SICKLE  
# D. & E.E. Sickle  
78.82 A. (PA)

497/58

# See map  
# 116

116