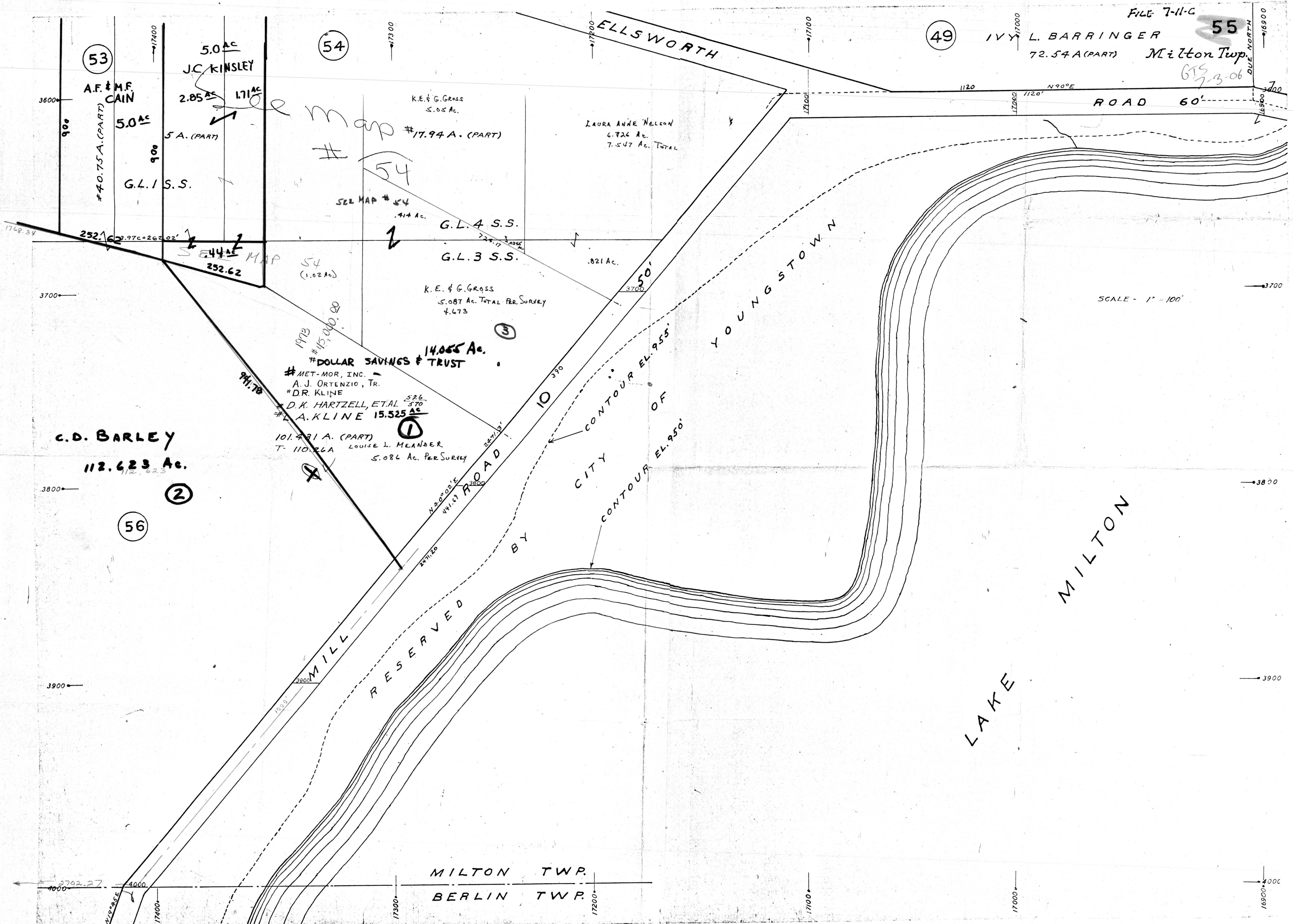


IVY L. BARRINGER  
72.54 A (PART) Milton Twp

6/23/06



53

54

49

5.0 AC

J.C. KINSLEY

A.F. & M.F. CAIN

40.75 A (PART)

5.0 AC

G.L. 1 S.S.

2.85 AC

1.71 AC

5 A. (PART)

K.E. & G. GROSS  
5.05 AC.

#17.94 A. (PART)

LAURA ANNE NELSON  
6.724 AC.  
7.547 AC. TOTAL

SEE MAP # 54

4.4 AC.

G.L. 4 S.S.

G.L. 3 S.S.

K.E. & G. GROSS  
5.087 AC. TOTAL PER SURVEY  
4.673

14.065 AC.

#DOLLAR SAVINGS & TRUST

#MET-MOR, INC.

A.J. ORTENZIO, TR.

#D.R. KLINE

#D.K. HARTZELL, ET AL

#A. KLINE 15.525 AC

101.431 A. (PART)

T. 110.264

LOUISE L. MEANBER

5.086 AC. PER SURVEY

C.D. BARLEY  
112.623 AC.

56

2

3

1

MILL ROAD RESERVED

BY CITY CONTOUR EL. 955

CONTOUR OF EL. 950

YOUNGSTOWN

LAKE MILTON

MILTON TWP.  
BERLIN TWP.

SCALE - 1" = 100'