

Milton Twp
THE B.P.O.E
COUNTRY CLUB
PLAT.

G.L. 4 C.S.

G.L. 5 C.S. (47)

G.S.
7-3-06

(46)

F.A. & E. SCOTT
#A.F. AND W.H. SCOTT
75.96 A (PART)
map #46

37.42c = 2469.72'

23.35c = 1541.1'

G.L. 3 C.S.
G.L. 4 C.S.
G.L. 1 S.S.

SCOTTCLIFF DR.

THELMA FEENEY
#ALBERT E. HOFUS

11.83 A. (1)

10 A. (2)

A.H. RICHARDSON
#HOWARD H. RICHARDSON

22.30 A 622
252

(3)

P.L. & G. BONSRILL
#JOHN FLAPS
#A.L. CASE AND FERN RAYL
#4.6 A.
22.30A.

(4)

L. M. J. GRAVE
5.0526 AC.

(4.02)

SCALE - 1" = 100'

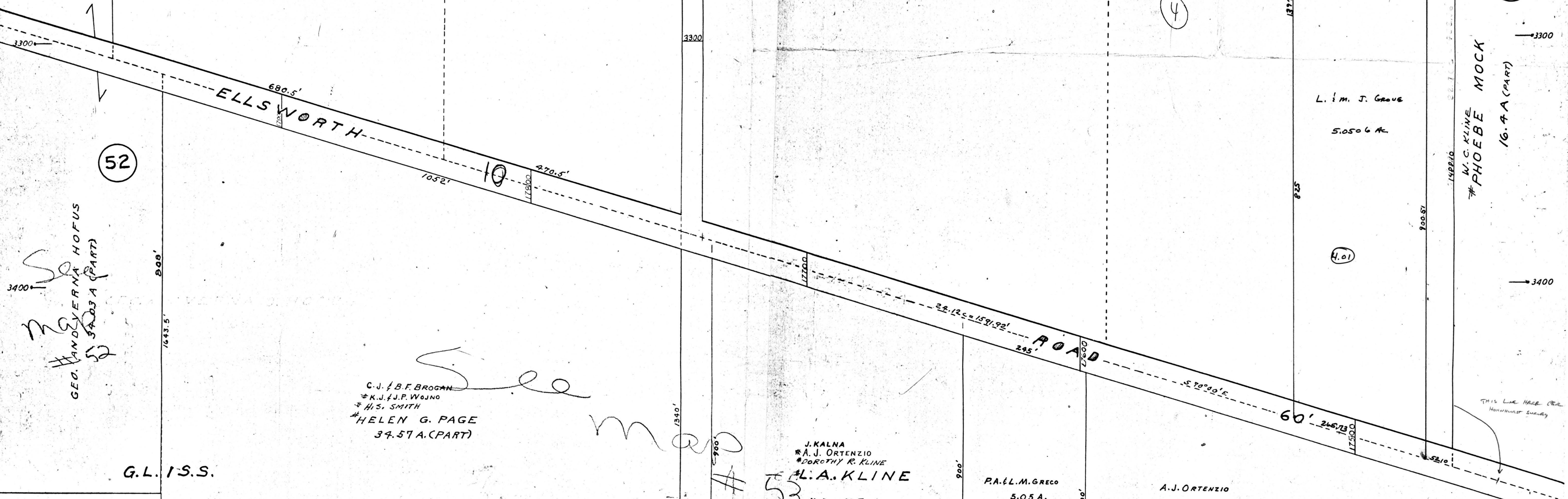
(50)

L. M. J. GRAVE
5.0506 AC.

(4.01)

W.C. KLINE
#PHOEBE MOCK
16.4 A (PART)

THIS LAKE HAS BEEN
REMOVED SUCCESS



(52)

GEO. HANOVERNA HOFUS
#3A.03 A (PART)

C.J. & B.F. BROGAN
#K.J. & J.P. WOJNO
#H.S. SMITH
#HELEN G. PAGE
34.57 A. (PART)

(53)

J. KALNA
#A.J. ORTENZIO
#DOROTHY R. KLINE
#A.A. KLINE
#40.75 A (PART)
#40.25 AC.
10 A.

P.A. & L.M. GRECO
5.05 A.

A.J. ORTENZIO
25.20 A.

V.L. CARSON
192.35 A (PART)
G.L. 2 S.S.

G.L. 1 S.S.

3100
3200
3300
3400
3500

17900
17800
17700

17900
17800
17700

17900
17800
17700

17900
17800
17700

17900
17800
17700

17900
17800
17700

17900
17800
17700

17900
17800
17700

17900
17800
17700

17900
17800
17700

17900
17800
17700

17900
17800
17700

17900
17800
17700

17900
17800
17700

17900
17800
17700

17900
17800
17700

17900
17800
17700

17900
17800
17700

17900
17800
17700

17900
17800
17700

17900
17800
17700