

A.F. AND W.H. SCOTT
G.L.4 C.S.

THE B.P.O.E COUNTRY CLUB

ALLOTTMENT

FILE 7-11-B

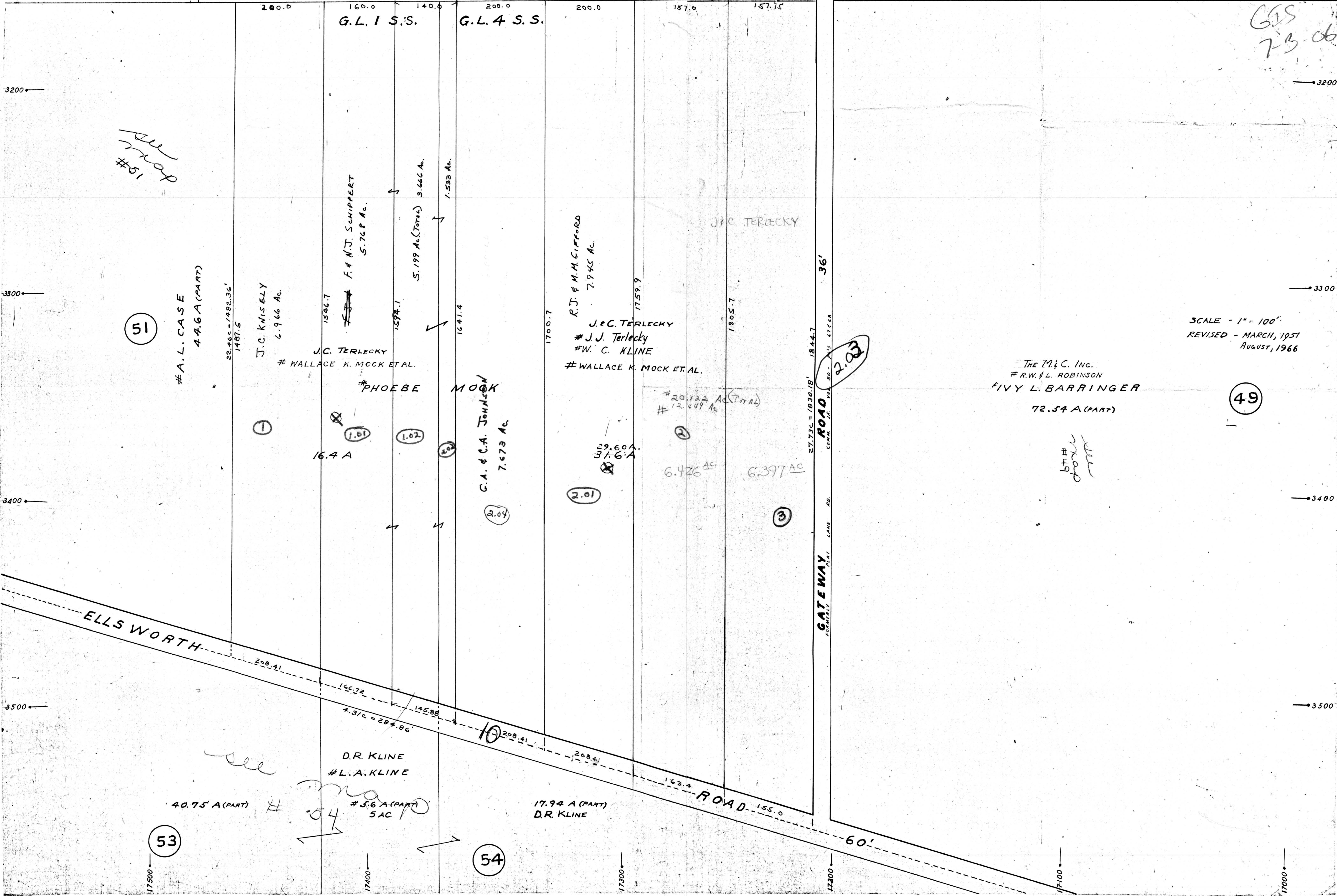
50

Milton Twp.

47

48

GIS
7-3-66



all road #51

51

#A.L. CASE
4.66 A (PART)

J.C. KWISELY
6.966 Ac.

F. & N.J. SCHIFFERT
5.768 Ac.

J.C. TERLECKY
WALLACE K. MOCK ET AL.

#PHOEBE MOOK

16.4 A

C.A. & C.A. JOHNSON
7.673 Ac.

R.J. & M.M. GIFFORD
7.945 Ac.

J.C. TERLECKY
J.J. Terlecky
W. C. KLINE
WALLACE K. MOCK ET AL.

20.122 Ac (TOTAL)
12.449 Ac

39.60 A
37.6 A

6.426 Ac

6.397 Ac

The M & C. Inc.
R.W. & L. ROBINSON
IVY L. BARRINGER
72.54 A (PART)

SCALE - 1" = 100'
REVISED - MARCH, 1951
AUGUST, 1966

49

ELLS WORTH ROAD

GATEWAY ROAD
FORMERLY PLAT LANE RD.

ROAD

40.75 A (PART)

D.R. KLINE
L.A. KLINE

5.6 A (PART)
5 AC

17.94 A (PART)
D.R. KLINE

53

54

all road #51