

File 7-11-A-3
16400
3

Milton Twp.

BLOCK NO. 7.
CITY OF YOUNGSTOWN
#46,403 A (PART)

G.L. 12. N.S.

G.L. 19. N.S.

GIS
6-30-06

REVISED - MAY, 1951
SCALE - 1" = 100'

HELEN ROSE

4

See map #6
BLOCK NO. 6
MILTON REALTY CO.
9.66 A

6

Greenbriar Ave
Margaret Gabanyic PI #1
Lot #1

3

Lot #2
435.6
767.90

2

BLOCK NO. 5
#FEDERAL REALTY CO.
64.965 A
A. & M. GABANYIC

1

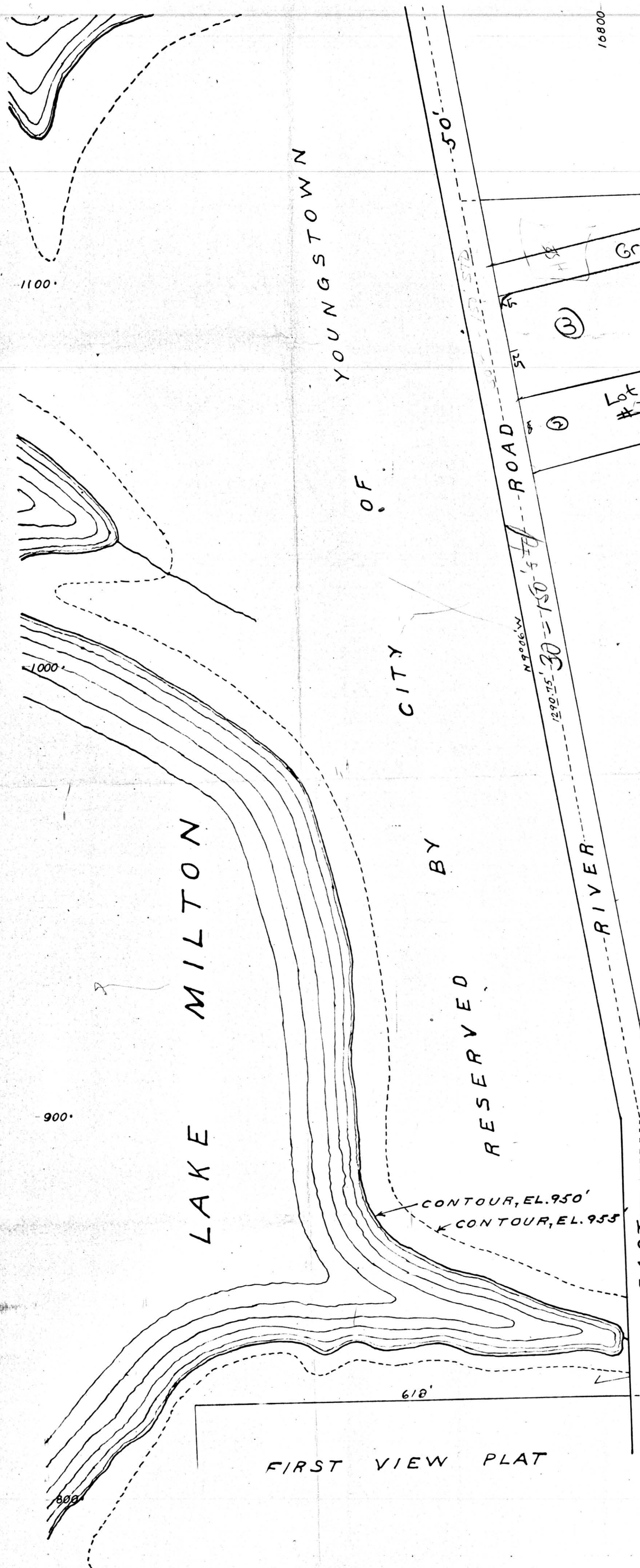
E.W. & B.I. Malmfeldt
#C.B. WEST
#ESTATE OF JOHN B. SHIVELEY
17.18 A
*T-16.74 A.
4.128 A

See map #2
L.E. SMITH
#H.E. SMITH
16.82 A

2

H.E. & A. KLINGEMAN
#ANNA SMITH WEAVER
#64.5 A (PART)
36.59 A.

1



FIRST VIEW PLAT

BONNIE VIEW PLAT

RESERVED BY CITY OF YOUNGSTOWN

LAKE MILTON

RIVER

CONTOUR, EL. 950'
CONTOUR, EL. 955'

EAST

Brice Place

YOUNGSTOWN

800

16400

166500

16600

16700

16800

900

1000

1100

900

750

1273.7

1000

1100

16500

16600

16700

16800