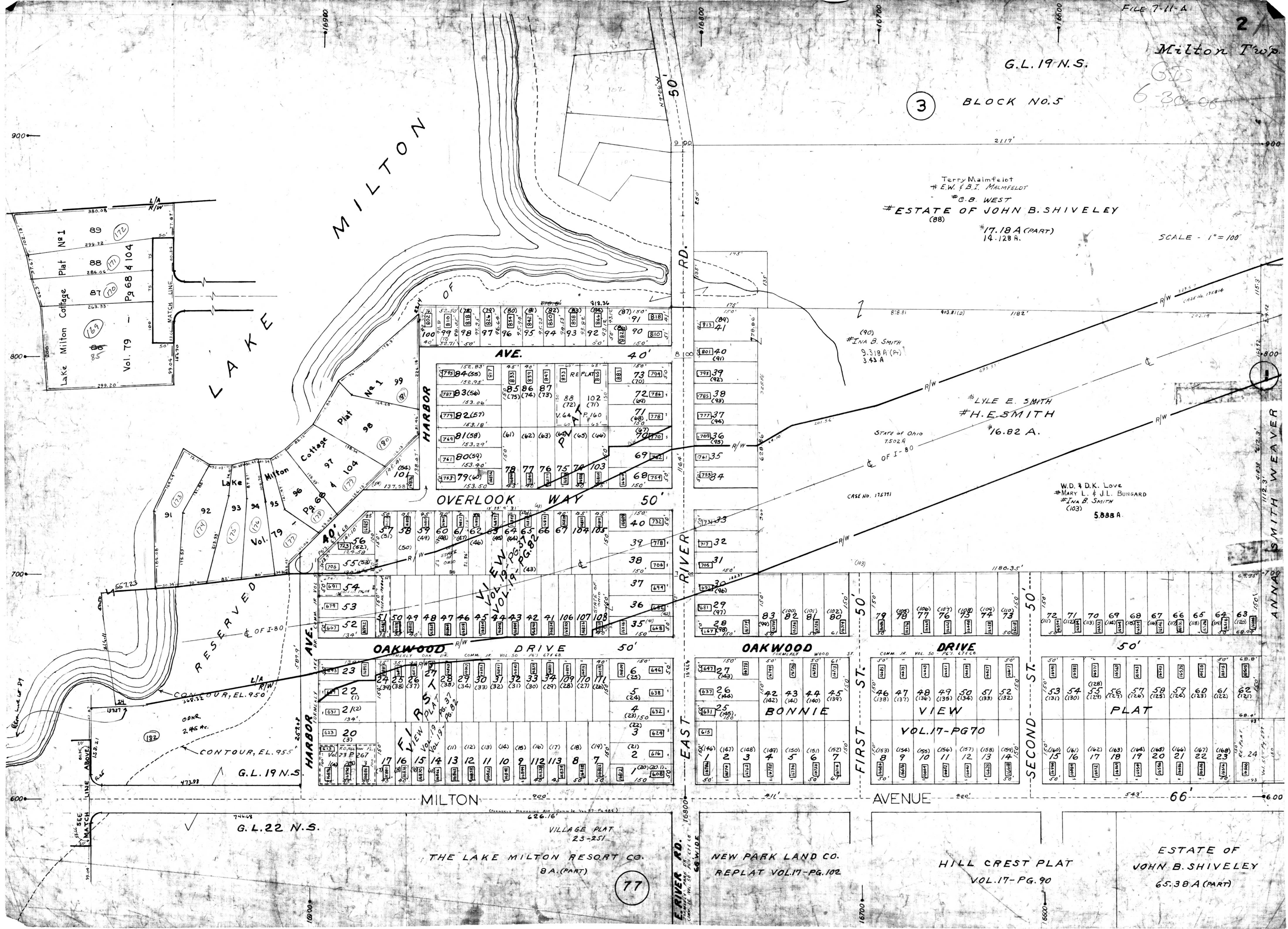


G.L. 19 N.S.

Milton Prop

3 BLOCK NO. 5

6-30-08



Terry Malmfelot
 # E.W. & B.I. MALMFELDT
 # O.B. WEST
 # ESTATE OF JOHN B. SHIVELEY
 (88)
 # 17.18 A (PART)
 14.128 A.

INA B. SMITH
 9.318 A (PART)
 3.43 A.

LYLE E. SMITH
 # H.E. SMITH
 # 16.82 A.

W.D. & D.K. Love
 # MARY L. & J.L. BURGARD
 # INA B. SMITH
 (103)
 5.888 A.

THE LAKE MILTON RESORT CO.
 23-251
 626.16'

NEW PARK LAND CO.
 REPLAT VOL. 17-PG. 102

HILL CREST PLAT
 VOL. 17-PG. 90

ESTATE OF JOHN B. SHIVELEY
 65.38 A (PART)

77