

G.L. 19 N.S.

Milton Twp

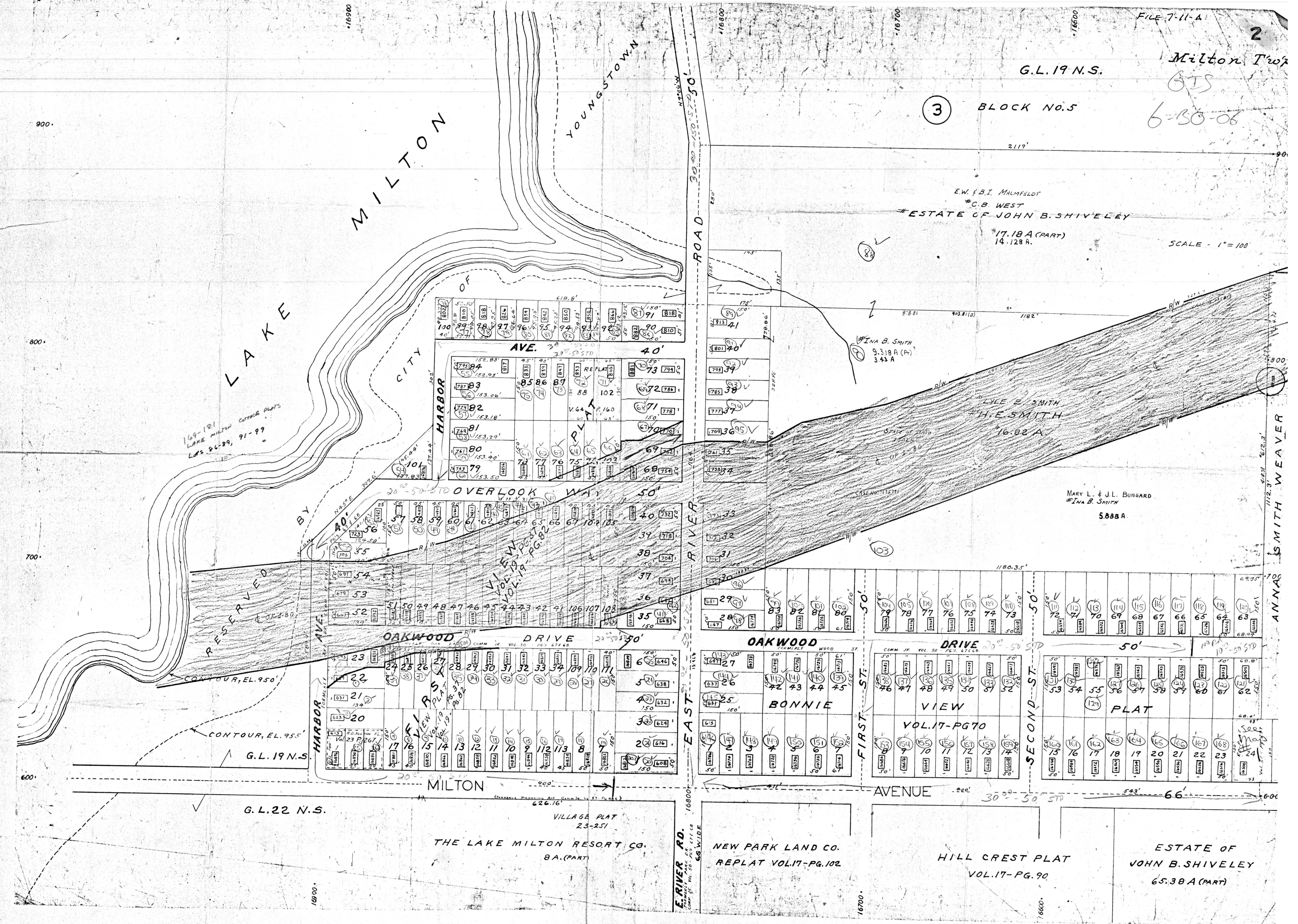
615
6-30-06

3 BLOCK NO. 5

E.W. & B.I. MALMELOT
#C.B. WEST
#ESTATE OF JOHN B. SHIVELEY

#17.18 A (PART)
14.128 A.

SCALE - 1" = 100'



169-181
LAKE MILTON
COTTAGE PLATS
LOTS 86-89, 91-99

RESERVED

CONTOUR, EL. 95.0'

CONTOUR, EL. 95.5'

G.L. 19 N.S.

G.L. 22 N.S.

VILLAGE PLAT
23-251
THE LAKE MILTON RESORT CO.
8A. (PART)

NEW PARK LAND CO.
REPLAT VOL. 17-PG. 102

HILL CREST PLAT
VOL. 17-PG. 90

ESTATE OF
JOHN B. SHIVELEY
65.38 A (PART)

MARY L. & J.L. BUNGARD
#INA B. SMITH
5888 A.

LYLE E. SMITH
#H.E. SMITH
16.82 A.

#INA B. SMITH
9.318 A (PART)
3.43 A.

SMITH WEAVER
ANNAS

E. RIVER RD.
66 WIDE

OAKWOOD DRIVE

OAKWOOD DRIVE

BONNIE VIEW

BONNIE VIEW

HILL CREST PLAT

HILL CREST AVENUE

MILTON

EAST RIVER ROAD

HARBOR AVENUE

OVERLOOK WAY

OAKWOOD DRIVE

HARBOR AVENUE

RESERVED

G.L. 19 N.S.

G.L. 22 N.S.

VILLAGE PLAT
23-251
THE LAKE MILTON RESORT CO.
8A. (PART)

NEW PARK LAND CO.
REPLAT VOL. 17-PG. 102

HILL CREST PLAT
VOL. 17-PG. 90

ESTATE OF
JOHN B. SHIVELEY
65.38 A (PART)

MARY L. & J.L. BUNGARD
#INA B. SMITH
5888 A.

LYLE E. SMITH
#H.E. SMITH
16.82 A.

#INA B. SMITH
9.318 A (PART)
3.43 A.

SMITH WEAVER
ANNAS

E. RIVER RD.
66 WIDE

OAKWOOD DRIVE

OAKWOOD DRIVE

BONNIE VIEW

BONNIE VIEW

HILL CREST PLAT

HILL CREST AVENUE

MILTON

EAST RIVER ROAD

HARBOR AVENUE

OVERLOOK WAY

OAKWOOD DRIVE

HARBOR AVENUE

RESERVED

G.L. 19 N.S.

G.L. 22 N.S.

VILLAGE PLAT
23-251
THE LAKE MILTON RESORT CO.
8A. (PART)

NEW PARK LAND CO.
REPLAT VOL. 17-PG. 102

HILL CREST PLAT
VOL. 17-PG. 90

ESTATE OF
JOHN B. SHIVELEY
65.38 A (PART)