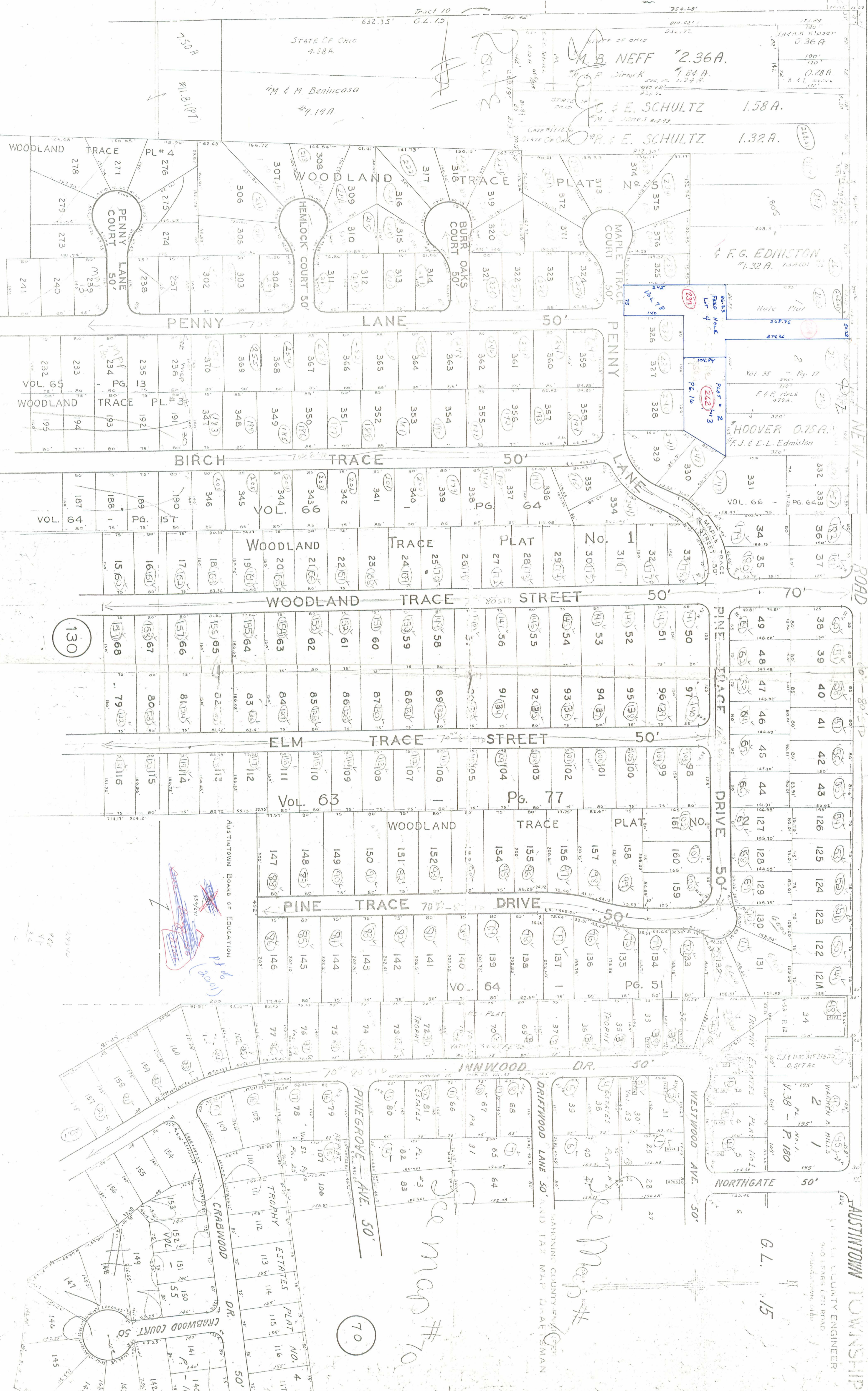


127

20



750 A
#1181811

STATE OF OHIO
4.58A
#M & M Benincasa
#9.19A

M.B. NEFF #2.36A
#R Dinnick
#64A
#1.74A

F.G. EDMISTON
#1.32A
#E. SCHULTZ
#1.58A
#E. SCHULTZ
#1.32A

F.G. EDMISTON
#1.32A

HOOVER 0.75A
#F.J. & E.L. Edmiston

130

70

See map #70

G.L. 15

AUSTINTOWN TOWNSHIP
COUNTY ENGINEER
ROAD LEASE LEFT ROAD
AUSTINTOWN, OHIO

PLATE 107