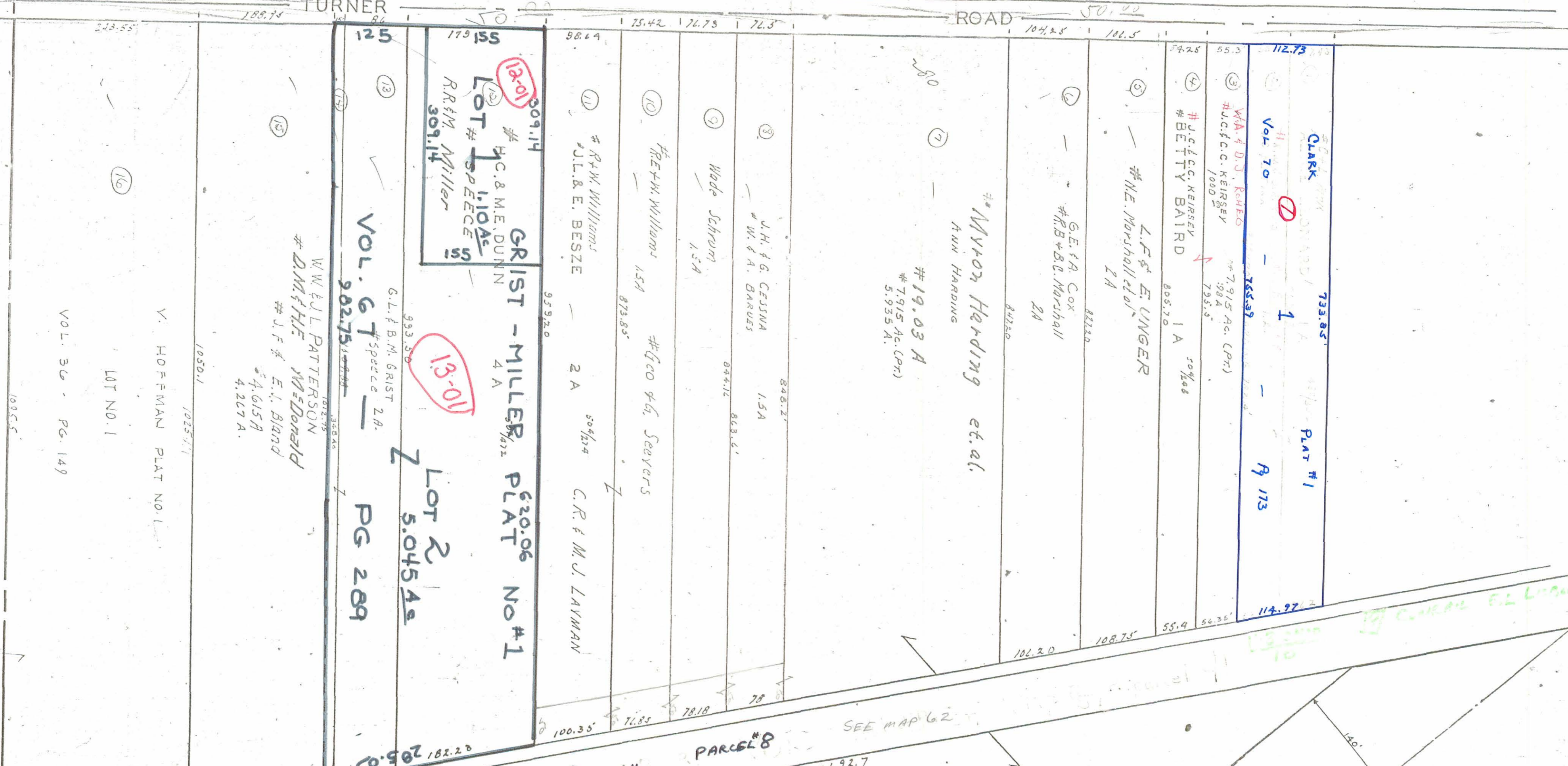


G.L. 25

TURNER ROAD

ROAD



V. HOFFMAN PLAT NO. 1
 LOT NO. 1
 VOL. 30 - PG. 149

GRIST - MILLER PLAT No #1
 LOT 2
 5.045 Acs
 PG 289
 VOL. 67

Myron Harding et al.
 Ann Harding
 #19.03 A
 #7915 Ac. (Prt)
 5.935 A.

GRIST - MILLER PLAT No #1
 LOT 2
 5.045 Acs

G.L. 24

63

AUSTINTOWN PLATE-7

G.L. 23

CANFIELD TOWNSHIP

J. KANSA ETAL.
 #56.21 A
 #55.21 A
 #45.87 A
 31.79 A.

see map #63

see map #63

H. KANOS
 6.134.

9.082 Ac.
 O.T.C.

M. A. HARDING 52/32
 # E. R. E. HARDING

29.36 Ac.

#41.09 A
 #38.275 (Prt)
 37.175 Ac. (Prt)

U-3 6/10

SEE MAP 62

PARCEL #8

CONRAIL

WILL - NEW LSSD

201.4

247.5

413

788.87'

2440

1601

1030.92'

1501

1796.2

1726.76'

4214