

FILE 1-7-5
LENA SIEFERT
6.27A Q16408 54
16.94c = 1118.04'

Austintown Twp.
LIZIE BUTTRY
1A
3.33c = 219.70'

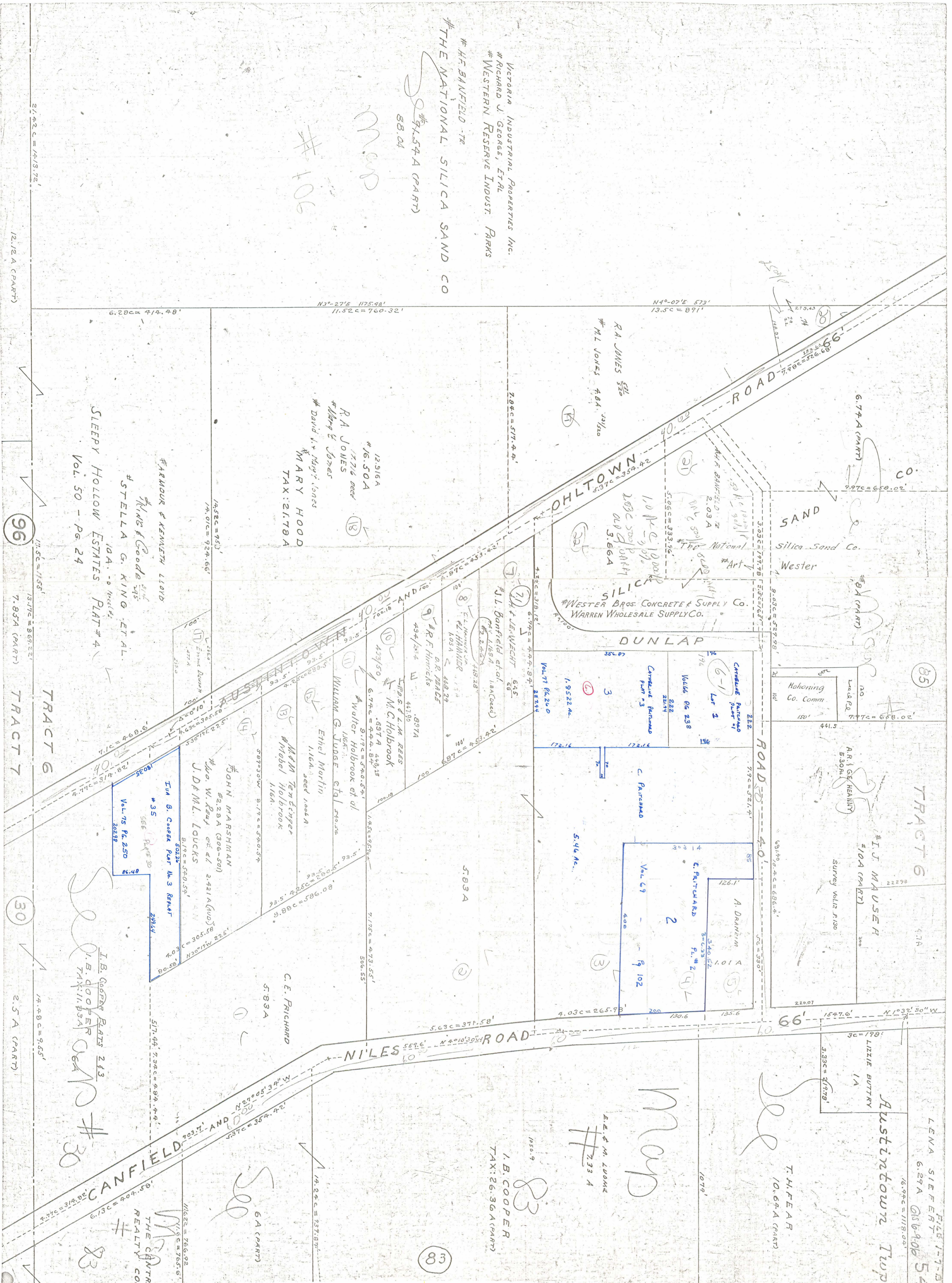
T. H. FEAR
10.67-A (PART)
1079'

E. E. M. LUDWIG
733 A

I. B. COOPER
TAX: 26.36 A (PART)

6 A (PART)
17.6c = 765.6'

THE CANTR
REALTY CO.
83
17.6c = 765.6'



Victoria Industrial Properties Inc.
RICHARD J. GEORGE, ET AL
WESTERN RESERVE INDUST. PARKS

H.F. BANFIELD - 72
THE NATIONAL SILICA SAND CO
74.574 A (PART)
88.04

106

R.A. JONES
Mary E Jones
David L. & Mary Jones
MARY HOOD
TAX: 21.78 A
12.516 A
16.50 A
17.716 ac

R.A. JONES
M.L. JONES 4.84. 30/150

WESTER BROS. CONCRETE & SUPPLY CO.
WARREN WHOLESALE SUPPLY CO.

SAND
Silica Sand Co.
Wester

ARMOUR & KENNETH LLOYD
STELLA G. KING ET AL.
SLEEPY HOLLOW ESTATES PLAT # 4
Vol. 50 - Pg. 24

96

TRACT 6
TRACT 7

30

TRACT 6

I. J. MAUSEL
10 A (PART)
Survey Vol. 12 P. 130

6-1
Lot 2

Volume 60 238

3

1.95224c

Vol. 71 P. 260

645

J.L. BANFIELD et al.
H. & L. WEGHT 68

R.F. HINCHICKS
D.R. HEALD

M.C. HOLBROOK
WALTER HOLBROOK et al

William G. Judge et al

Ethel Martin
MAM Ten Eyger
Mabel Holbrook

JOHN MARSHMAN
Wm. W. Reed et al
J. DEML. LOUCKS

Iul G. Cooper Plat. No. 3 REPLAT

35
566 P. 250

Vol. 75 P. 250

I. B. COOPER PLATS 2 & 3
I. B. COOPER
TAX: 11.83 A
30

83