

Matched Line on Plate #89

35

L. E. KIMM
B. 309 AC

1

J.C. KREITZBURG
James C & Anna Kreitzburg
#41312 A (B7A)
300 AC
22.45 AC

4

James C & Anna Kreitzburg
533 A (B7A)
300 AC

10

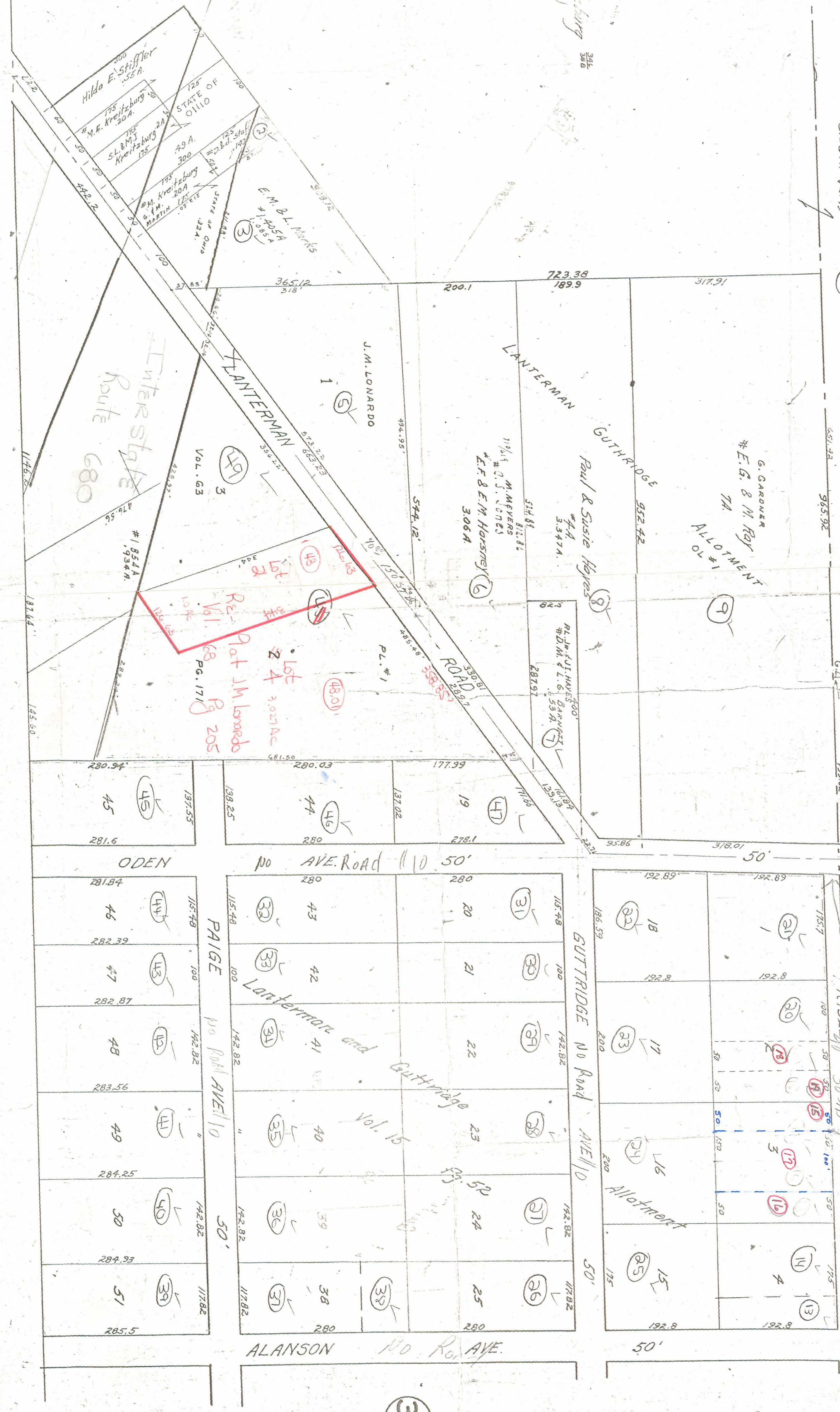
L. E. DUFFINO
W. E. & H. Kreitzburg
#51181 (B7A)
56.20 AC (B7A)

Map #72

Matched Line on Plate 72

72

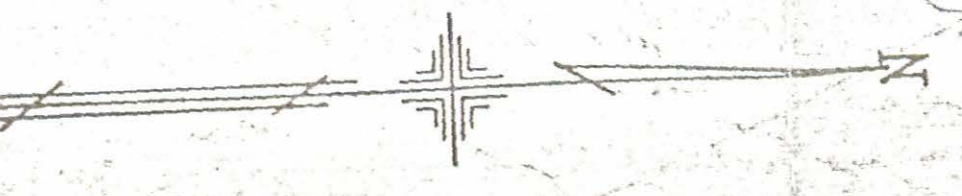
R. E. PUGH
J. Herman
290 AC



34

37

SCALE
100' = 1"



OFFICE OF COUNTY ENGINEER
MAHONING COUNTY COURT HOUSE
YOUNGSTOWN, OHIO

AUSTINTOWN TWP

G.L. No. 13

PLATE 3