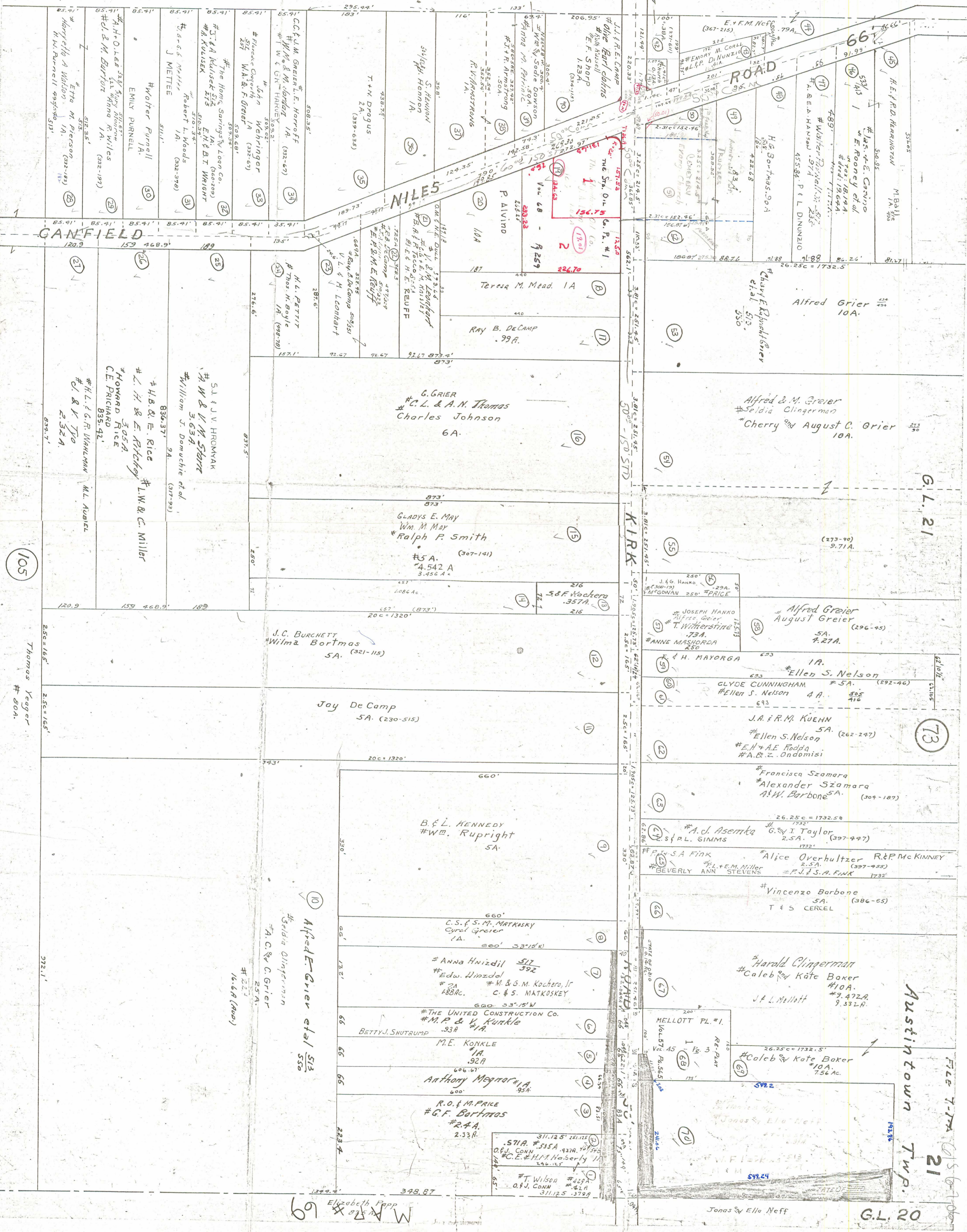


William & Minnie Rowe
78.42A.

G.L. 22.



CANFIELD

MILES ROAD

KIRK

G.L. 21

73

AUSTINTOWN TWP.

G.L. 20

105

Thomas Yeager #504

M.A.R. #69
Elizabeth Fapp

FILE 7-7A G.S. 21

JOSEPH HANKO
Alfred Greier
August Greier
5A. 7.27A.

Alfred Greier
August Greier
5A. 7.27A.

Ellen S. Nelson
5A. (262-247)

J.A.F.R.M. KUENN
Ellen S. Nelson
5A. (262-247)

Francisca Szamara
Alexander Szamara
A.W. Barbone
5A. (304-187)

Alice Overhulter
R&P Mc KINNEY
5A. (397-997)

Vincenzo Barbone
5A. (386-65)

Harald Clingerman
Caleb & Kate Baker
5A. 9.472A.
9.332A.

MELLOTT PL. #1
5A. 7.56 Ac.

Jonas & Ella Neff

G. GRIER
C.L. & A.M. Thomas
Charles Johnson
6A.

GLADYS E. MAY
Wm. M. May
Ralph P. Smith
5A. (307-141)
4.542 A.
3.452 A.

J.C. BURCHETT
Wilma Bortmas
5A. (321-115)

Joy De Camp
5A. (230-515)

B & L. KENNEDY
Wm. Rupright
5A.

Anna Hnizdil
Edw. Wozdel
M. & G.M. Kochera, Jr
C. & S. MATKOSKEY
5A. 1.68 (Rev.)

THE UNITED CONSTRUCTION CO.
M.P. & M. Kunkle
BETTY J. SHUTRUMP
5A.

M.E. KONKLE
5A. 92A

Anthony Megnor
5A. 95A

R.O. & M. PAKE
G.F. Bortmas
5A. 2.33A.

Teresa M. Mead 1A
RAY B. DeCAMP
79A.

Alfred & M. Greier
Seldia Clingerman
Cherry & August C. Grier
10A.

Alfred Greier
August Greier
5A. 7.27A.

Ellen S. Nelson
5A. (262-247)

J.A.F.R.M. KUENN
Ellen S. Nelson
5A. (262-247)

Francisca Szamara
Alexander Szamara
A.W. Barbone
5A. (304-187)

Alice Overhulter
R&P Mc KINNEY
5A. (397-997)

Vincenzo Barbone
5A. (386-65)

Harald Clingerman
Caleb & Kate Baker
5A. 9.472A.
9.332A.

MELLOTT PL. #1
5A. 7.56 Ac.

Jonas & Ella Neff

R.O. & M. PAKE
G.F. Bortmas
5A. 2.33A.