

872.61
 J. A. SCHNURRENBERGER
 5.189 AC $\frac{1480}{721}$
 872.61
 359
 959.06

J. R. SCHNURRENBERGER
 #JOHN A. GILBERT
 TAX: #37A (PART)
 *131.99 AC
 121.612 AC
 1222
 801

120

NEW ROAD

AUGUST KLEM
 #BOA (PART)
 35.95 A.

FRANK BUCHWALTER
 99.95A (PART)

TRACT 9

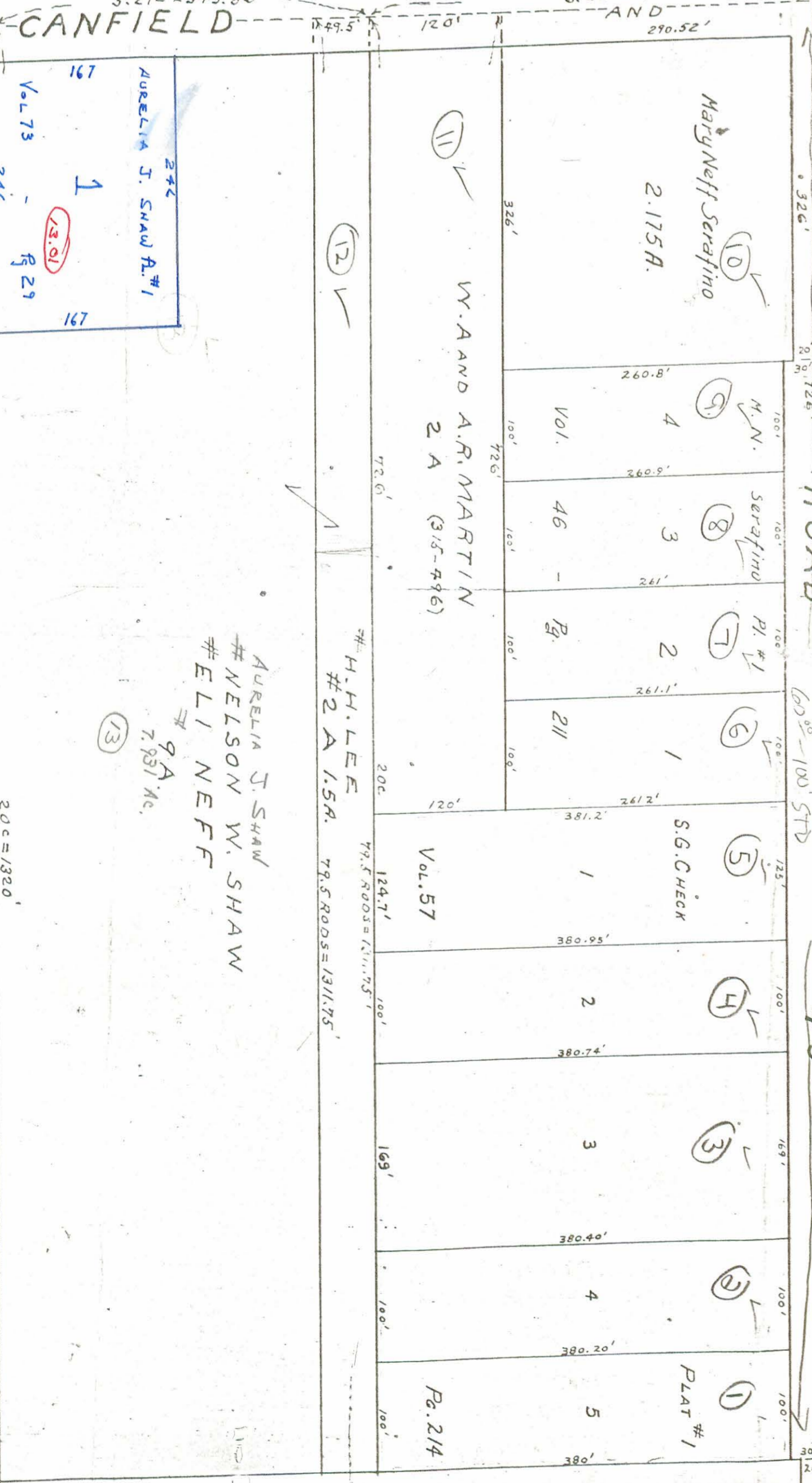
115

NILES ROAD

115

ROAD

40'



DORA NEFF
 #21.33 A (PART)
 17.17A

20

File 7-1-A
 015 6407 19
 Austin town Trip

TRACT 10

127

Board of Education - Austin Town Local School Dist
 #JOHN ARMOND SCHNURRENBERGER
 #MARGT GILBERT
 103.75A (PART)
 21.03 A (PART)