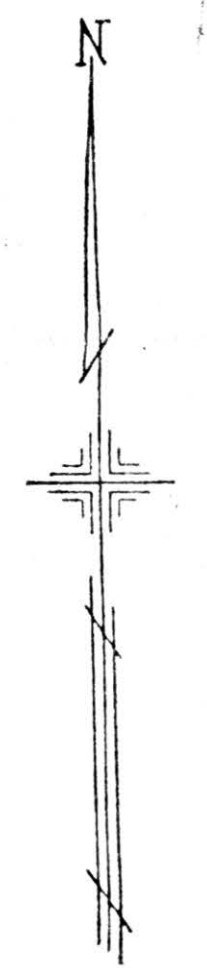


No. 1
LOWELLVILLE VILLAGE

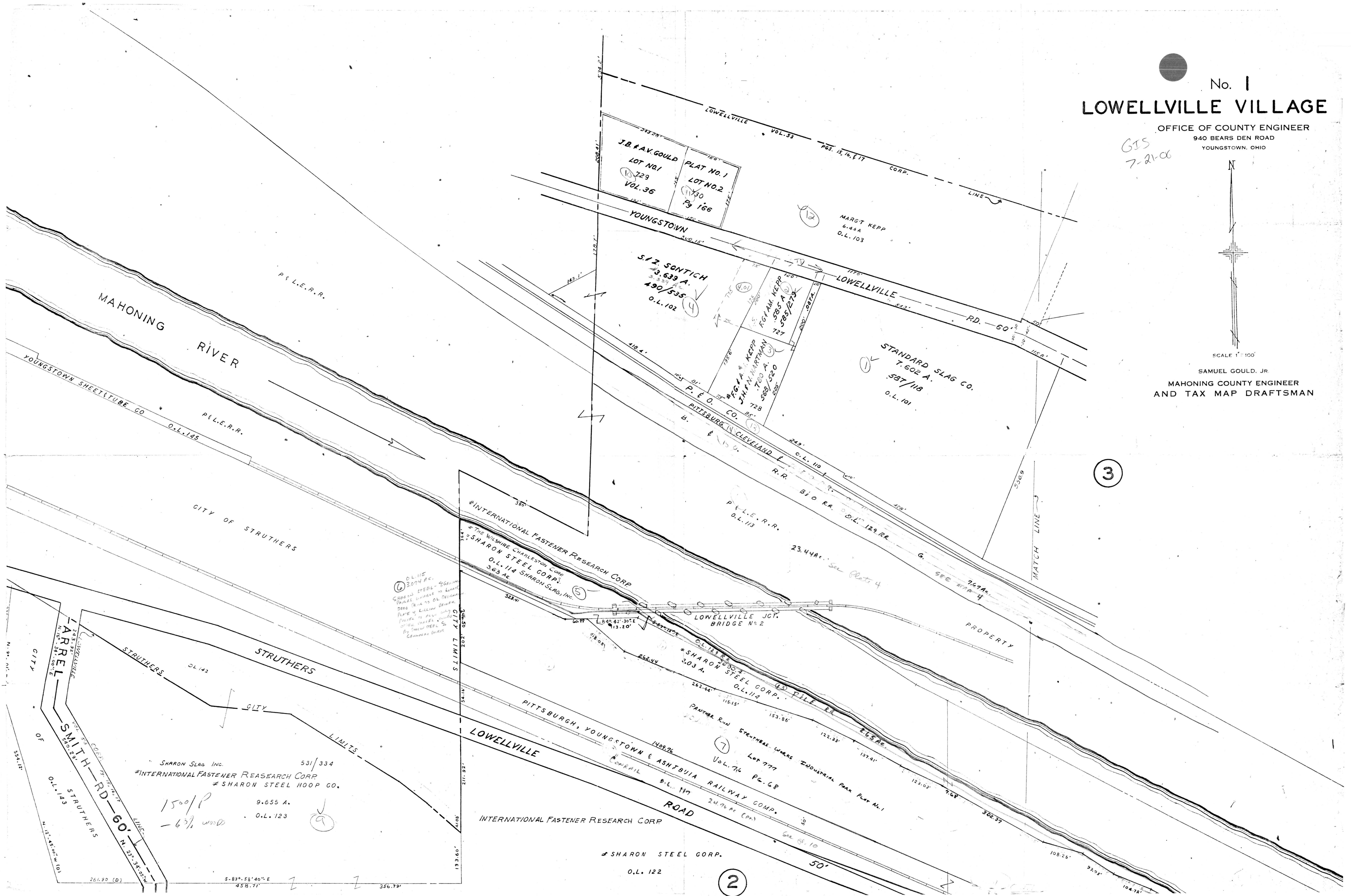
OFFICE OF COUNTY ENGINEER
 940 BEARS DEN ROAD
 YOUNGSTOWN, OHIO

GIS
 7-21-00



SCALE 1" = 100'

SAMUEL GOULD, JR.
 MAHONING COUNTY ENGINEER
 AND TAX MAP DRAFTSMAN



2