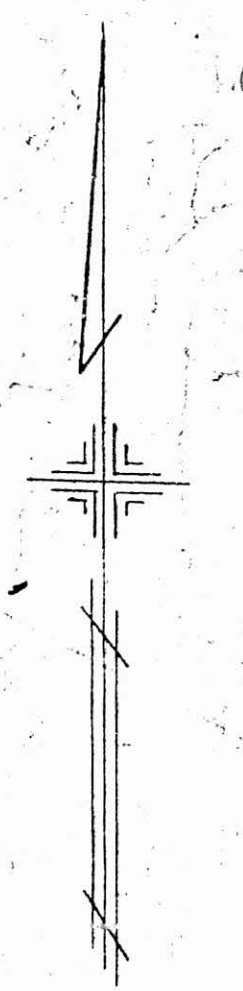


GIS  
7-16-06



SCALE 1" = 100'

SAMUEL GOULD, JR.  
MAHONING COUNTY ENGINEER  
AND TAX MAP DRAFTSMAN

39

35

35

41

THE REPUBLIC STEEL CORP. 10

OL.186

4.192 AC (29)

B&O RR 4.154 AC (27)

B&O RR 4.151 AC (28)

BLAST FURNACE 2

OL.680

5.21 ACRES (16) (17)

MAHONING RIVER

O.L. 559  
15.56 ACRES (8)

THE REPUBLIC STEEL CORP.  
ELECTRIC WORLD

O.L. 563  
12.05 ACRES TAX 14.25 ACRES (15)

L.E. & E.R.R.

POLAND AVENUE 50 FT

P.Y. & A.R.R.

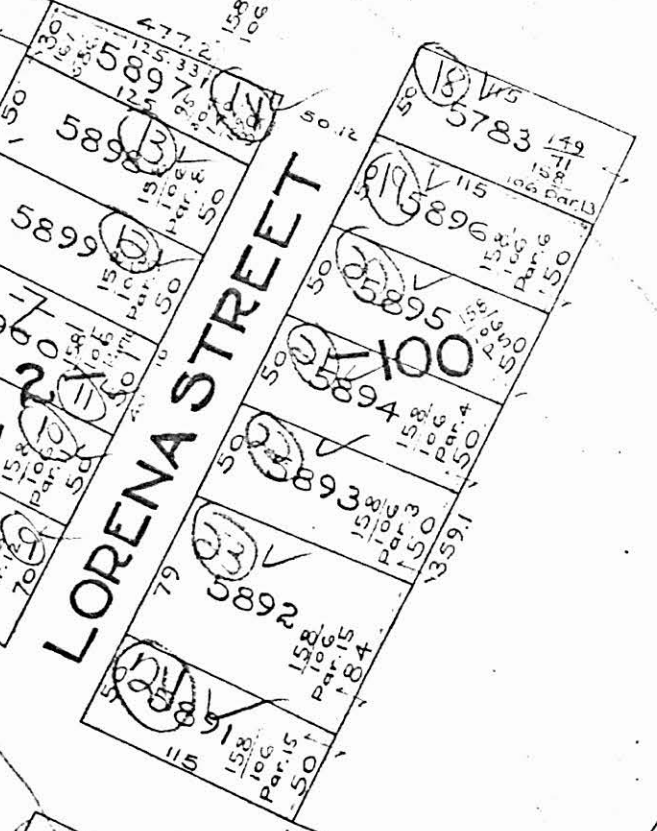
39

43

CALEDONIA STREET

CANFIELD BRANCH

43



LORENA STREET

OL. 564  
1.87 ACRES TAX 2.47 ACRES (25)

ECKLEY STREET 4.49 ACRES

43

42

41