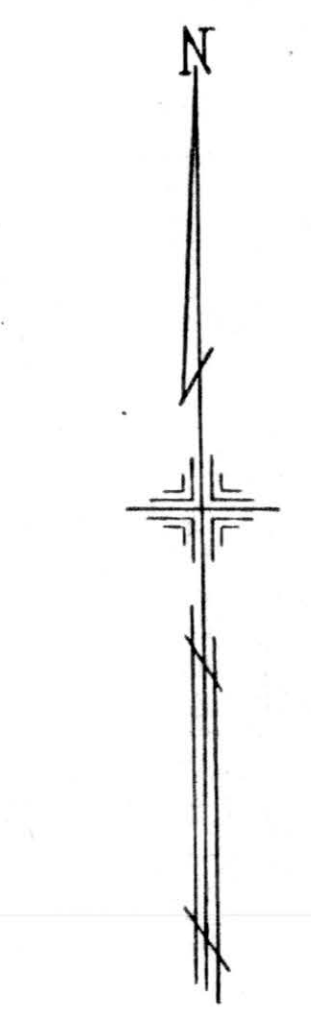


PLATE 97

G.L. No. 55
POLAND TWP.

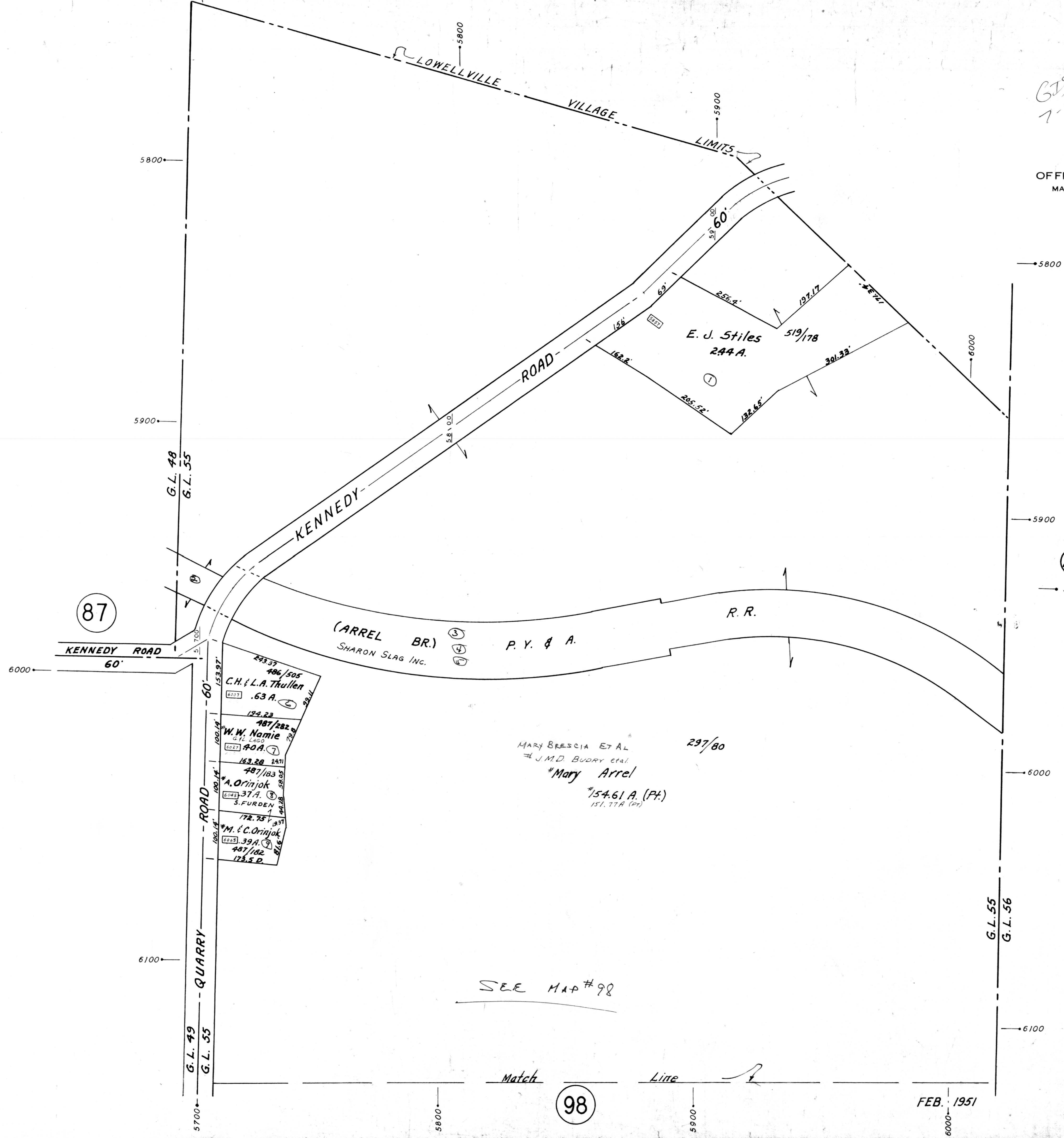
OFFICE OF COUNTY ENGINEER
MAHONING COUNTY COURT HOUSE
YOUNGSTOWN, OHIO



SCALE
1" = 100'

LEGEND

- (22) PLATE NUMBER
- 4700 HOUSE NUMBERING GRID
- [4170] HOUSE NUMBER
- (2) PERMANENT PARCEL NO.



87

98

FEB. 1951

SEE MAP # 98

Match

Lite

G.L. 48
G.L. 55

G.L. 49
G.L. 55

G.L. 55
G.L. 56

KENNEDY ROAD

KENNEDY ROAD 60'

QUARRY ROAD

(ARREL BR.)
SHARON SLAG INC.

P. Y. & A.

R. R.

297/80

MARY BRESCIA ET AL
J.M.D. BUDRY ET AL
Mary Arrel
154.61 A. (Pt.)
151.77 A. (Pt.)

E. J. Stiles
244 A.
519/78

486/505
C.H. & L.A. Thullen
.63 A.
154.22
487/282
W.W. Namie
40 A.
163.28
487/183
A. Orinjok
37 A.
S. FURDEN
172.75
M. & C. Orinjok
39 A.
487/182
173.5 D.

5800

5900

6000

6100

5700

5800

5900

6000

5800

5900

6000

6100

5900

5800

LOWELLVILLE VILLAGE LIMITS