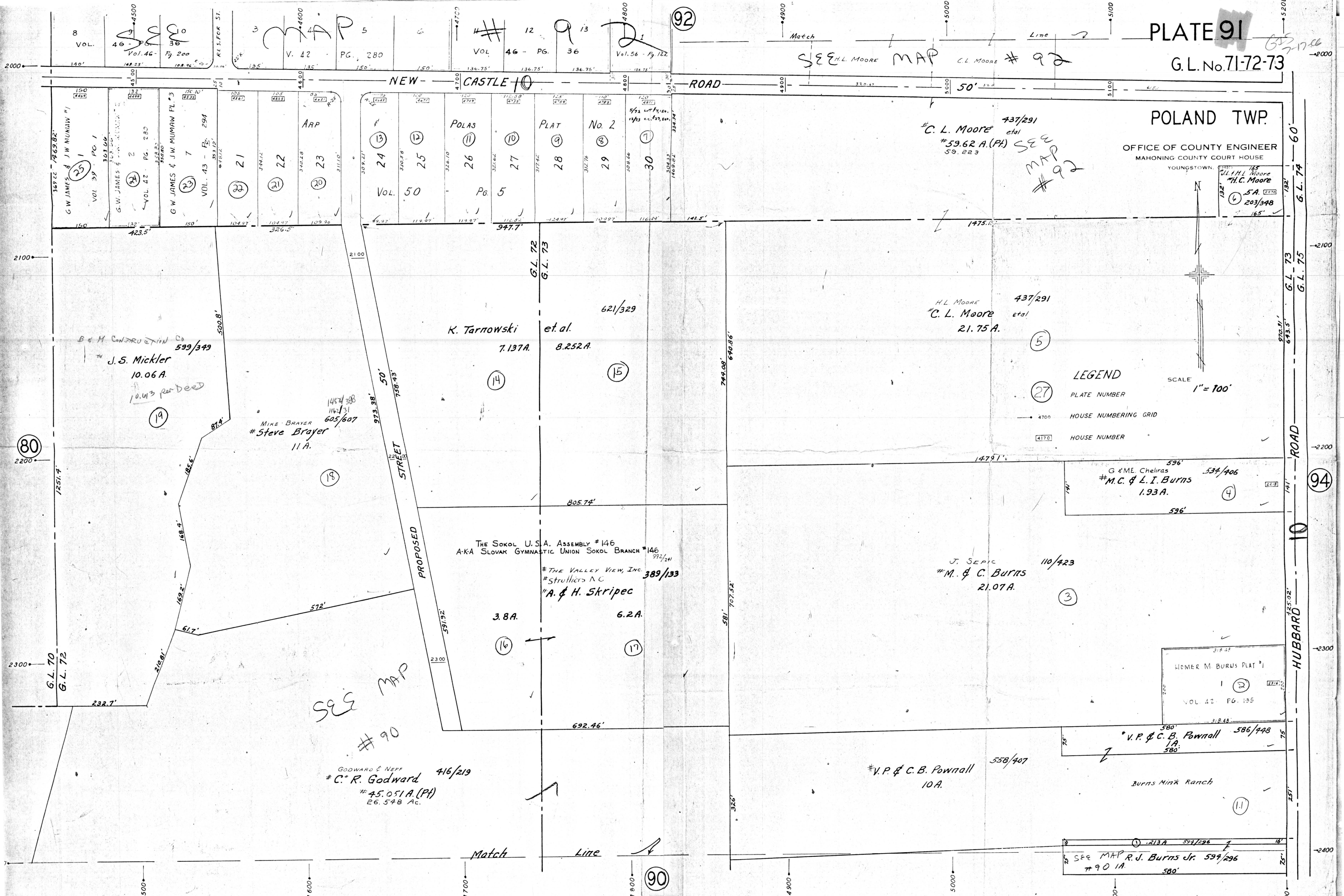


U.I.H.L. Moore
H.C. Moore
S.A. 2370
203/348
165'

LEGEND

- (27) PLATE NUMBER
- 4700 HOUSE NUMBERING GRID
- 4170 HOUSE NUMBER

SCALE 1" = 100'



SEE MAP #90

SEE H.L. MOORE MAP #92

C.L. Moore et al
#59.62 A. (PH)
59.223
SEE MAP #92

H.L. Moore et al
C.L. Moore et al
437/291
21.75 A.

J. SEPIC
M. & C. Burns
110/423
21.07 A.

V.P. & C.B. Pownall
10 A.
558/407

GODWARD & NEFF
C.R. Godward
#45.051 A. (PH)
26.548 Ac.
416/219

THE SOKOL U.S.A. ASSEMBLY #146
A-KA SLOVAK GYMNASTIC UNION SOKOL BRANCH #146
#THE VALLEY VIEW, INC.
#Strulliers N.C.
#A. & H. Skripec
389/133

K. Tarnowski et al.
7.137 A.
8.252 A.

B & M CONSTRUCTION CO
J.S. Mickler
599/349
10.06 A.
10.43 per deed

MIKE BRAYER
#Steve Brayer
11 A.
145/438
116/31
605/607

SEE MAP #90
R.J. Burns Jr.
597/296
#90 1A
580'

Burns Mink Ranch

V.P. & C.B. Pownall
10 A.
580/448

HOMER M. BURNS PLAT #1
VOL. 42 PG. 135

G & M.E. Cheliras
#M.C. & L.I. Burns
1.93 A.
534/406

621/329

3.8 A.

6.2 A.

692.46'

805.74'

947.7'

1475.1'

1479.1'

749.08'
640.86'

581'
707.52'

973.38'
738.43'

500.8'

874'

185.6'

168.4'

169.2'

61.7'

572'

597.52'

2100'

2100'

2300'

2300'

2300'

2300'

2300'

2300'

2300'

2300'

2300'