

69-7-17-06

OFFICE OF COUNTY ENGINEER

50	51	52	53	54	55	56	57	58	59
1	2	3	4	5	6	7	8	9	10

ANNIE ST. 40'

ROBINSON PLAT

ROBINSON 14

VOL. 16 PG. 222

SCALE 1" = 100'

J. Pavlov et al

1.391A.

564/580

J. Pavlov

1.301A.

564/580

3A.

528/538

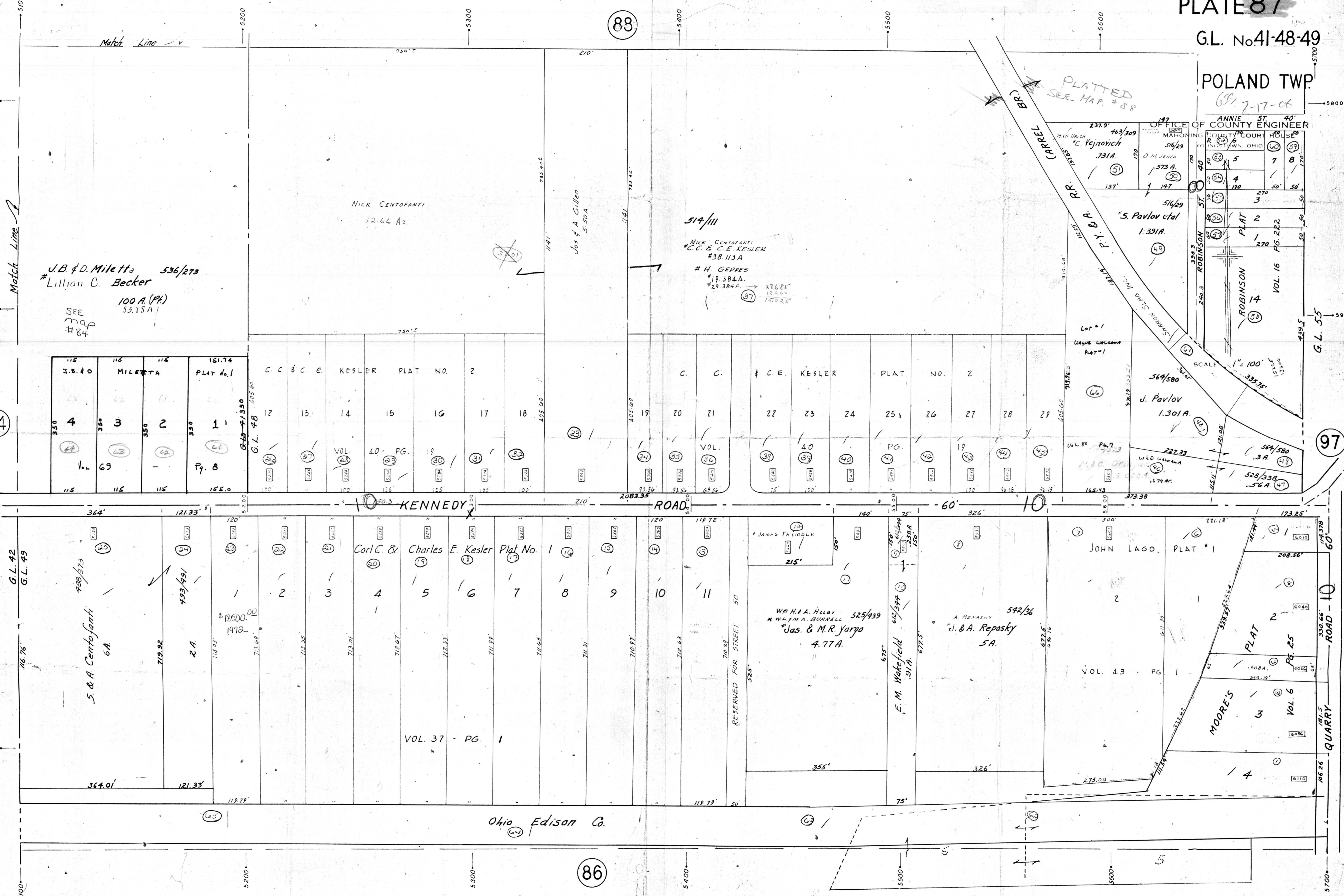
56A.

88

86

84

97



NICK CENTOFANTI

12.66 Ac.

J.B. & D. Mileta 536/273

# Lillian C. Becker

100 A. (PA)

53.88 A.

SEE MAP #84

514/111

NICK CENTOFANTI

# C.C. & C.E. KESLER

# 38 113A

# H. GEDDES

# 19.384A.

# 29.384A.

27.685

12.660

15.025

112	113	114	151.74	C. C. & C. E. KESLER PLAT NO. 2														C. C. & C. E. KESLER PLAT NO. 2													
3.B. & O	MILETA		PLAT No. 1	12	13	14	15	16	17	18	19	20	21	22	23	24	25	26	27	28	29	27	23	24	25	26	27	28	29		
4	3	2	1	12	13	14	15	16	17	18	19	20	21	22	23	24	25	26	27	28	29	27	23	24	25	26	27	28	29		
4	3	2	1	12	13	14	15	16	17	18	19	20	21	22	23	24	25	26	27	28	29	27	23	24	25	26	27	28	29		
4	3	2	1	12	13	14	15	16	17	18	19	20	21	22	23	24	25	26	27	28	29	27	23	24	25	26	27	28	29		

KENNEDY ROAD

QUARRY ROAD

Carl C. & Charles E. Kesler Plat No. 1

2 3 4 5 6 7 8 9 10 11

VOL. 37 - PG. 1

W.H.A. Holby

# W.H.M.A. BURRELL

# Jas. & M.R. Jarpa

4.77A.

525/439

A. REPASKY

# J. B. A. Repasky

5A.

592/36

JOHN LAGO, PLAT #1

2

VOL. 43 - PG. 1

MOORE'S

PLAT 2

PLAT 3

PLAT 4

VOL. 6

PG. 25

Ohio Edison Co.

G.L. 42

G.L. 49

G.L. 55

G.L. 55

G.L. 55