

PLATE 97
G. L. 16 DIV. 4
BOARDMAN TOWNSHIP

OFFICE OF COUNTY ENGINEER
940 BEARS DEN ROAD
YOUNGSTOWN, OHIO

Glenwood Ave
Dedication No. 45
Vol. 76 Pg. 115
2.51 Ac.

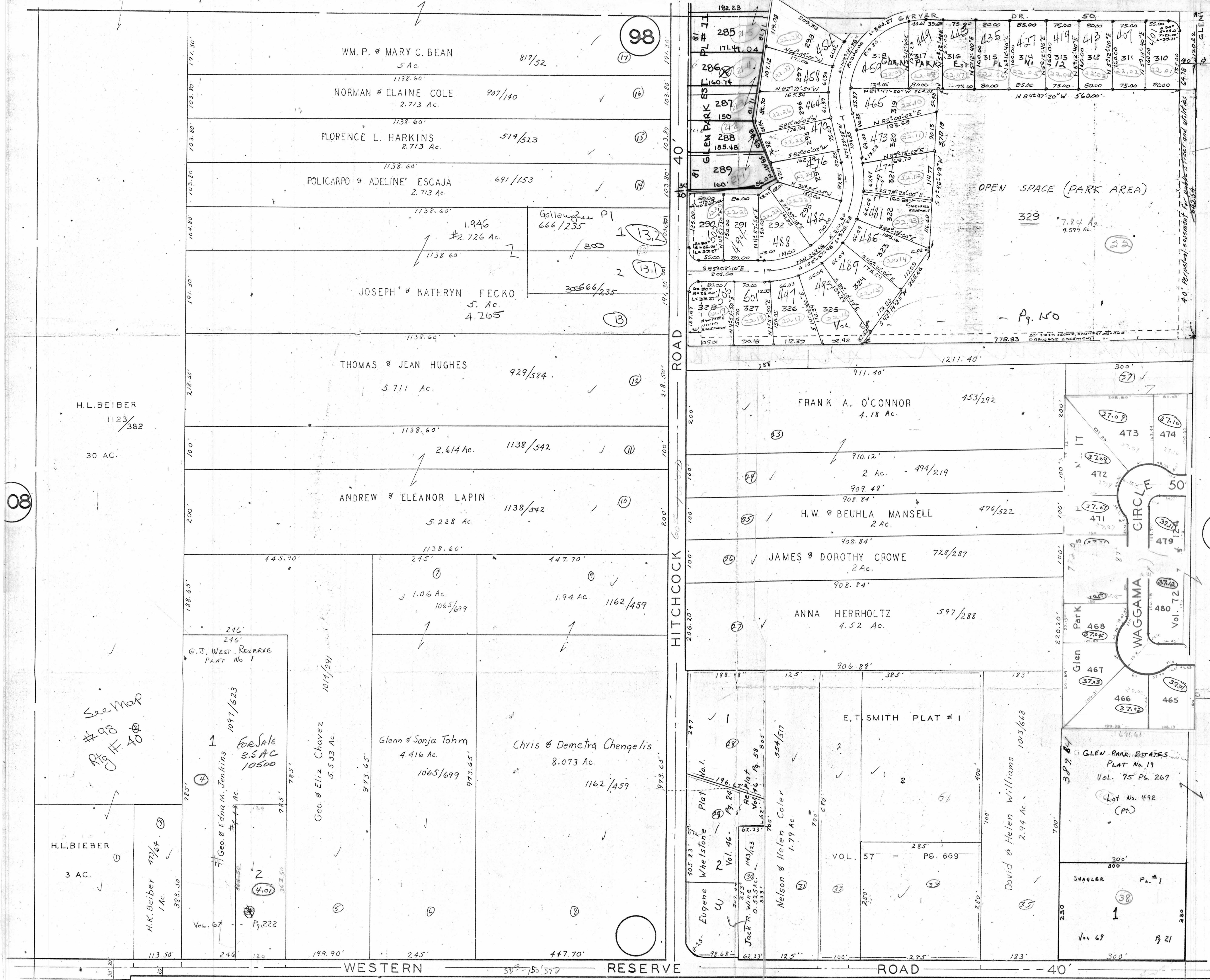
GIS
6-21-06



SCALE 1"=100'

MICHAEL FITAS
MAHONING COUNTY ENGINEER
AND TAX MAP DRAFTSMAN

DRAWN BY - K.E. SNYDER



08

98

96

WESTERN RESERVE ROAD 40'

HITCHCOCK ROAD 40'

OPEN SPACE (PARK AREA)

CIRCLE 50'

WAGGAMA

See Map
98
Pg. 40

For Sale
3.5 AC
10500

G. J. WEST RESERVE
PLAT No 1

Geo. & Edna M. Jenkins
444 Ac.
1097/623

Geo. & Eliz Chavez
5.533 Ac.
1014/291

Glenn & Sonja Tohm
4.416 Ac.
1065/699

Chris & Demetra Chengelis
8.073 Ac.
1162/459

H.L. BEIBER
3 AC.

H.K. Beiber
1 Ac.
472/64

Vol. 67
Pg. 222

Geo. & Eliz Chavez
5.533 Ac.
1014/291

Glenn & Sonja Tohm
4.416 Ac.
1065/699

Chris & Demetra Chengelis
8.073 Ac.
1162/459

Nelson & Helen Coler
1.79 Ac.
554/517

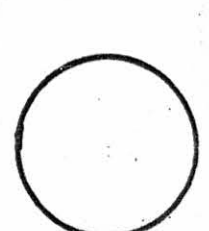
David & Helen Williams
2.94 Ac.
1013/668

GLEN PARK ESTATES
PLAT No. 19
Vol. 75 Pg. 267

Lot No. 492
(Pt.)

SWAGLER
P.L. # 1

Vol. 69
Pg. 21



329
7.24 Ac.
7.599 Ac.

Pg. 150

13.2

13.1

13

13

13

13

13

13

13

13

13

13

13

13

13

13