

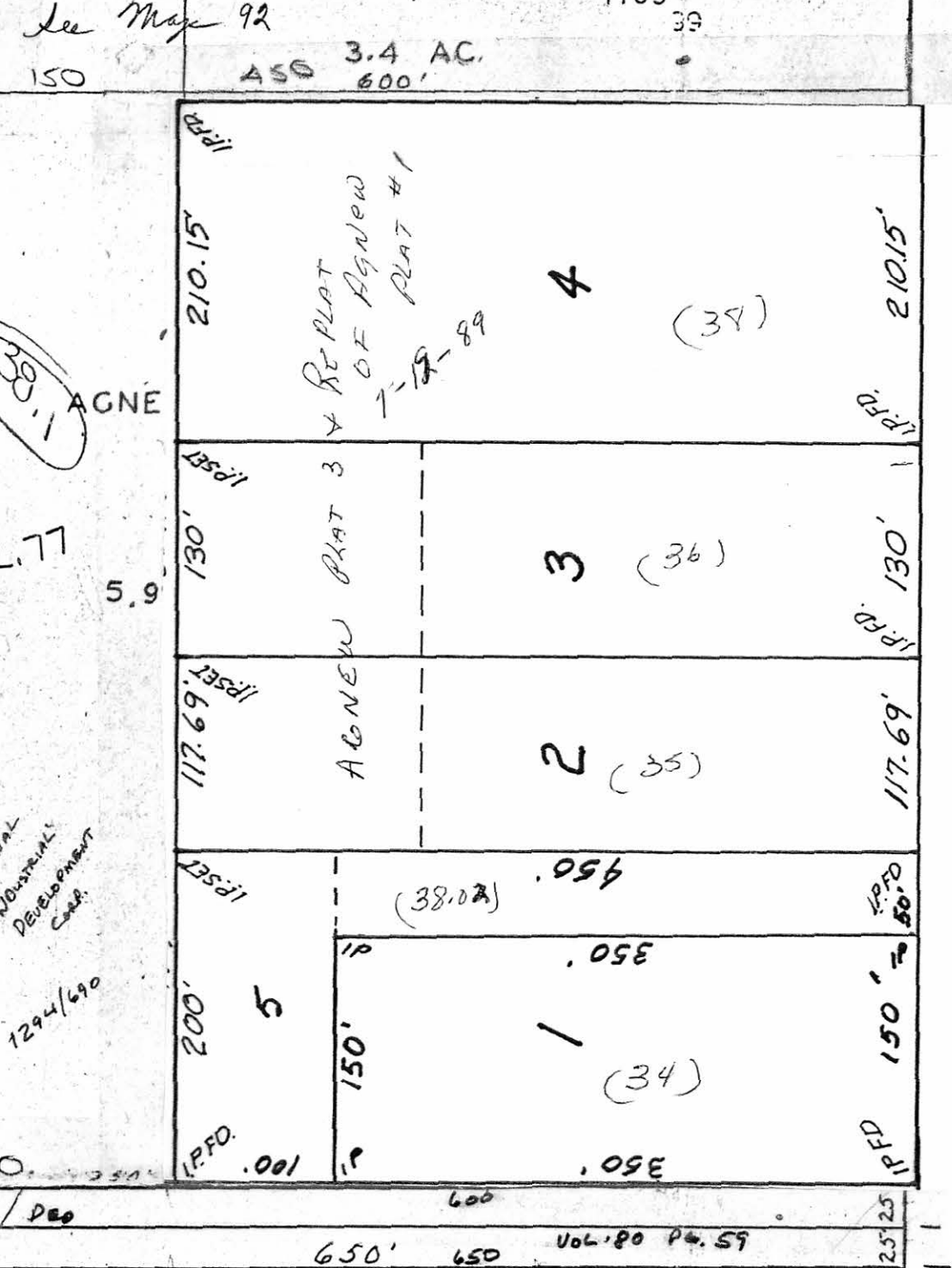
92

The Board of Education
39.18 Ac.
Dedicated For Street purposes (1.08 Ac.)
903/362
Lee Map 92

Lee Map 92
10+15

The Board of Education
33.153 Ac.
1098/474
475

The Board of Education
17.266 Ac.
1108/274



JACK LEMKE CHEVROLET, INC.
4.882 Ac. 938/537

0.338 AC. 92
G.L. 9 - Div. 3
G.L. 11 - Div. 3

100

GLENWOOD AVE

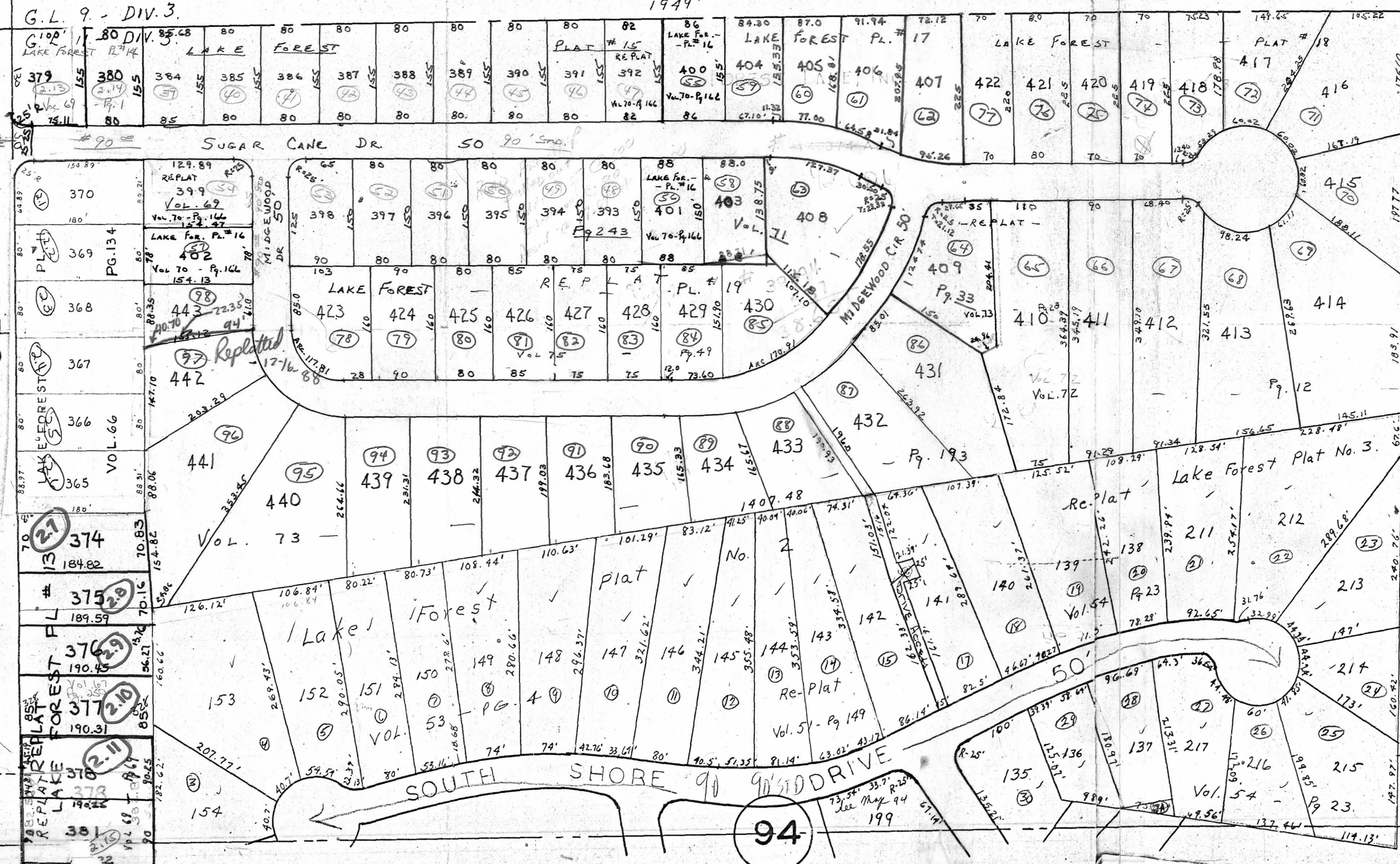
MARKET STREET

PLATE 93
G.L. 9, 11. DIV. 3.
BOARDMAN TOWNSHIP

OFFICE OF COUNTY ENGINEER
940 BEARS DEN ROAD
YOUNGSTOWN, OHIO

MICHAEL FITAS
MAHONING COUNTY ENGINEER
AND TAX MAP DRAFTSMAN

DRAWN BY - K.E.SNYDER



94

