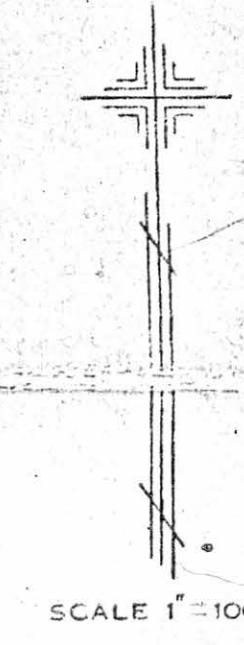


CANFIELD - COM - POLAND - ROAD

PLATE 91
G.L.-3. DIV. 1.
G.L.-7,9. DIV. 2.
BOARDMAN TOWNSHIP

OFFICE OF COUNTY ENGINEER
940 BEARS DEN ROAD
YOUNGSTOWN, OHIO

625
621-06



MICHAEL FITAS
MAHONING COUNTY ENGINEER
AND TAX MAP DRAFTSMAN

DRAWN BY - K.E.SNYDER

GLENNWOOD AVE. 100' COM

MARKET STREET 120' 600'

401.00 AC
THE E. J. DE BARTOLO CORP.
9.85 Ac. 647/287

ST. CHARLES CHURCH
11.844 Ac. 626/490
10.934 Ac.

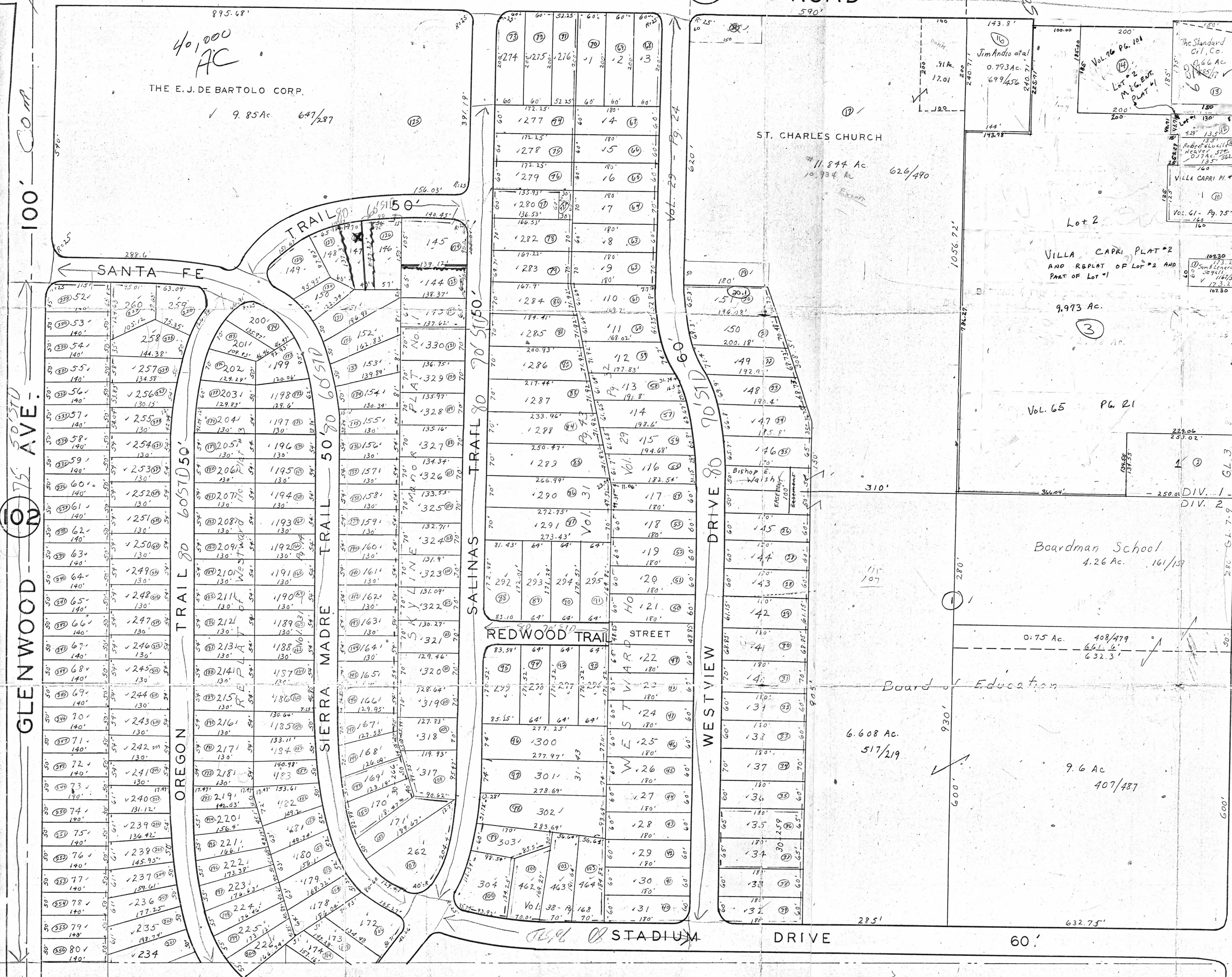
VILLA CAPRI PLAT #2
AND REPLAT OF LOT #2 AND
PART OF LOT #1

Vol. 65 PG. 21

Boardman School
4.26 Ac. 161/137

6.608 Ac.
517/219

9.6 Ac.
407/487



1574
174
179
184
185
111