

OFFICE OF COUNTY E
940 BEARS DEN ROAD
YOUNGSTOWN, OHIO

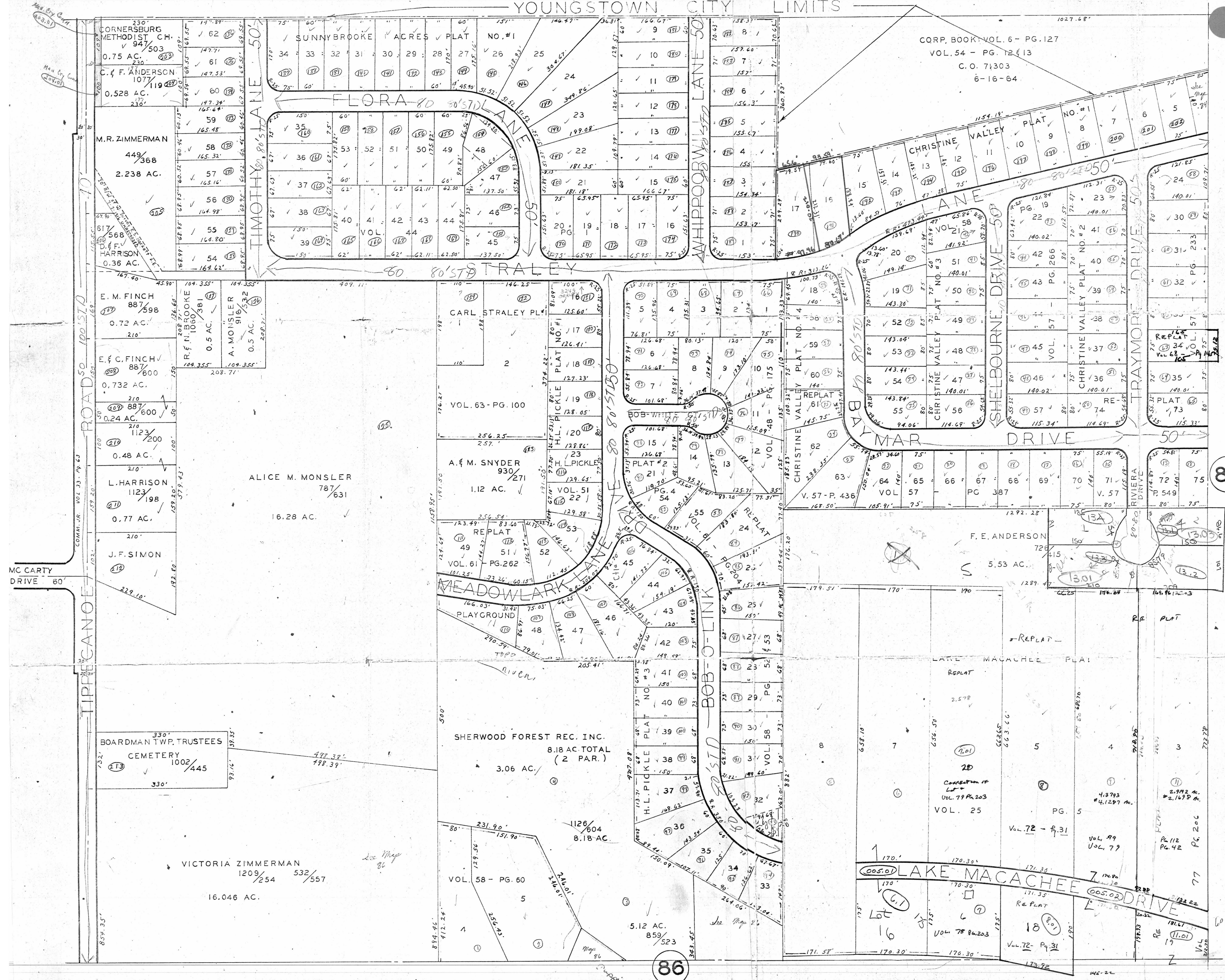
65
6-21-06

SCALE 1"=100'

MICHAEL FITAS
MAHONING COUNTY ENGINEER
AND TAX MAP DRAFTSMAN
REDRAWN BY: K.E. SNYDER
MARCH, 1972

84

86



CORP. BOOK VOL. 6 - PG. 127
VOL. 54 - PG. 12 & 13
C. O. 71303
6-16-64

SUNNYBROOKE ACRES PLAT NO. #1

FLORA 80 90'S DRIVE

CHRISTINE VALLEY PLAT NO. #1

CHRISTINE VALLEY PLAT NO. #2

CHRISTINE VALLEY PLAT NO. #3

CHRISTINE VALLEY PLAT NO. #4

CHRISTINE VALLEY PLAT NO. #5

CHRISTINE VALLEY PLAT NO. #6

CHRISTINE VALLEY PLAT NO. #7

CHRISTINE VALLEY PLAT NO. #8

CHRISTINE VALLEY PLAT NO. #9

CHRISTINE VALLEY PLAT NO. #10

CHRISTINE VALLEY PLAT NO. #11

CHRISTINE VALLEY PLAT NO. #12

CHRISTINE VALLEY PLAT NO. #13

CHRISTINE VALLEY PLAT NO. #14

CHRISTINE VALLEY PLAT NO. #15

CHRISTINE VALLEY PLAT NO. #16

CHRISTINE VALLEY PLAT NO. #17

CHRISTINE VALLEY PLAT NO. #18

CHRISTINE VALLEY PLAT NO. #19

CHRISTINE VALLEY PLAT NO. #20

CHRISTINE VALLEY PLAT NO. #21

CHRISTINE VALLEY PLAT NO. #22

CHRISTINE VALLEY PLAT NO. #23

CHRISTINE VALLEY PLAT NO. #24

CHRISTINE VALLEY PLAT NO. #25

CHRISTINE VALLEY PLAT NO. #26

CHRISTINE VALLEY PLAT NO. #27

CHRISTINE VALLEY PLAT NO. #28

CHRISTINE VALLEY PLAT NO. #29

CHRISTINE VALLEY PLAT NO. #30

CHRISTINE VALLEY PLAT NO. #31

CHRISTINE VALLEY PLAT NO. #32

CHRISTINE VALLEY PLAT NO. #33

CHRISTINE VALLEY PLAT NO. #34

CHRISTINE VALLEY PLAT NO. #35

ALICE M. MONSLER 78 3/31

A. & M. SNYDER 930 2/71

VICTORIA ZIMMERMAN 1209 2/54 532 3/57

SHERWOOD FOREST REC. INC. 8.18 AC. TOTAL (2 PAR.)

BOARDMAN TWP. TRUSTEES CEMETERY 1002 4/45

16.28 AC.

16.046 AC.

3.06 AC.

8.18 AC.

VOL. 58 - PG. 60

5.12 AC. 859 5/23

E. M. FINCH 887 5/98

E. & C. FINCH 887 6/00

L. HARRISON 1123 1/98

J. F. SIMON

REPLAT

REPLAT

REPLAT

REPLAT

REPLAT

CARL STRALEY PLAT NO. #1

H. L. PICKLE PLAT NO. #1

H. L. PICKLE PLAT NO. #2

H. L. PICKLE PLAT NO. #3

H. L. PICKLE PLAT NO. #4

H. L. PICKLE PLAT NO. #5

H. L. PICKLE PLAT NO. #6

H. L. PICKLE PLAT NO. #7

H. L. PICKLE PLAT NO. #8

H. L. PICKLE PLAT NO. #9

H. L. PICKLE PLAT NO. #10

H. L. PICKLE PLAT NO. #11

BOB-WHITE PLAT NO. #1

BOB-WHITE PLAT NO. #2

BOB-WHITE PLAT NO. #3

BOB-WHITE PLAT NO. #4

BOB-WHITE PLAT NO. #5

BOB-WHITE PLAT NO. #6

BOB-WHITE PLAT NO. #7

BOB-WHITE PLAT NO. #8

BOB-WHITE PLAT NO. #9

BOB-WHITE PLAT NO. #10

BOB-WHITE PLAT NO. #11

BOB-WHITE PLAT NO. #12

CHRISTINE VALLEY PLAT NO. #1

CHRISTINE VALLEY PLAT NO. #2

CHRISTINE VALLEY PLAT NO. #3

CHRISTINE VALLEY PLAT NO. #4

CHRISTINE VALLEY PLAT NO. #5

CHRISTINE VALLEY PLAT NO. #6

CHRISTINE VALLEY PLAT NO. #7

CHRISTINE VALLEY PLAT NO. #8

CHRISTINE VALLEY PLAT NO. #9

CHRISTINE VALLEY PLAT NO. #10

CHRISTINE VALLEY PLAT NO. #11

CHRISTINE VALLEY PLAT NO. #12

CHRISTINE VALLEY PLAT NO. #1

CHRISTINE VALLEY PLAT NO. #2

CHRISTINE VALLEY PLAT NO. #3

CHRISTINE VALLEY PLAT NO. #4

CHRISTINE VALLEY PLAT NO. #5

CHRISTINE VALLEY PLAT NO. #6

CHRISTINE VALLEY PLAT NO. #7

CHRISTINE VALLEY PLAT NO. #8

CHRISTINE VALLEY PLAT NO. #9

CHRISTINE VALLEY PLAT NO. #10

CHRISTINE VALLEY PLAT NO. #11

CHRISTINE VALLEY PLAT NO. #12

CHRISTINE VALLEY PLAT NO. #1

CHRISTINE VALLEY PLAT NO. #2

CHRISTINE VALLEY PLAT NO. #3

CHRISTINE VALLEY PLAT NO. #4

CHRISTINE VALLEY PLAT NO. #5

CHRISTINE VALLEY PLAT NO. #6

CHRISTINE VALLEY PLAT NO. #7

CHRISTINE VALLEY PLAT NO. #8

CHRISTINE VALLEY PLAT NO. #9

CHRISTINE VALLEY PLAT NO. #10

CHRISTINE VALLEY PLAT NO. #11

CHRISTINE VALLEY PLAT NO. #12

84

86