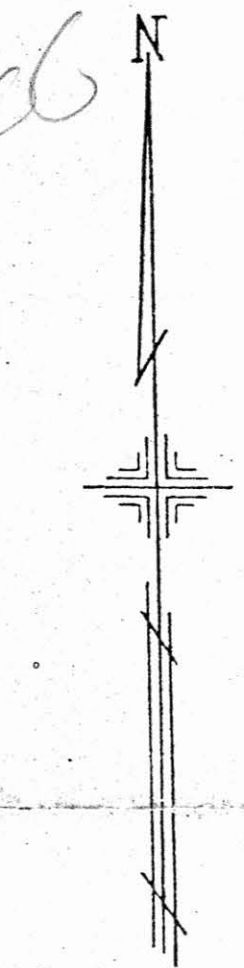


65  
67006



SCALE 1"=100'

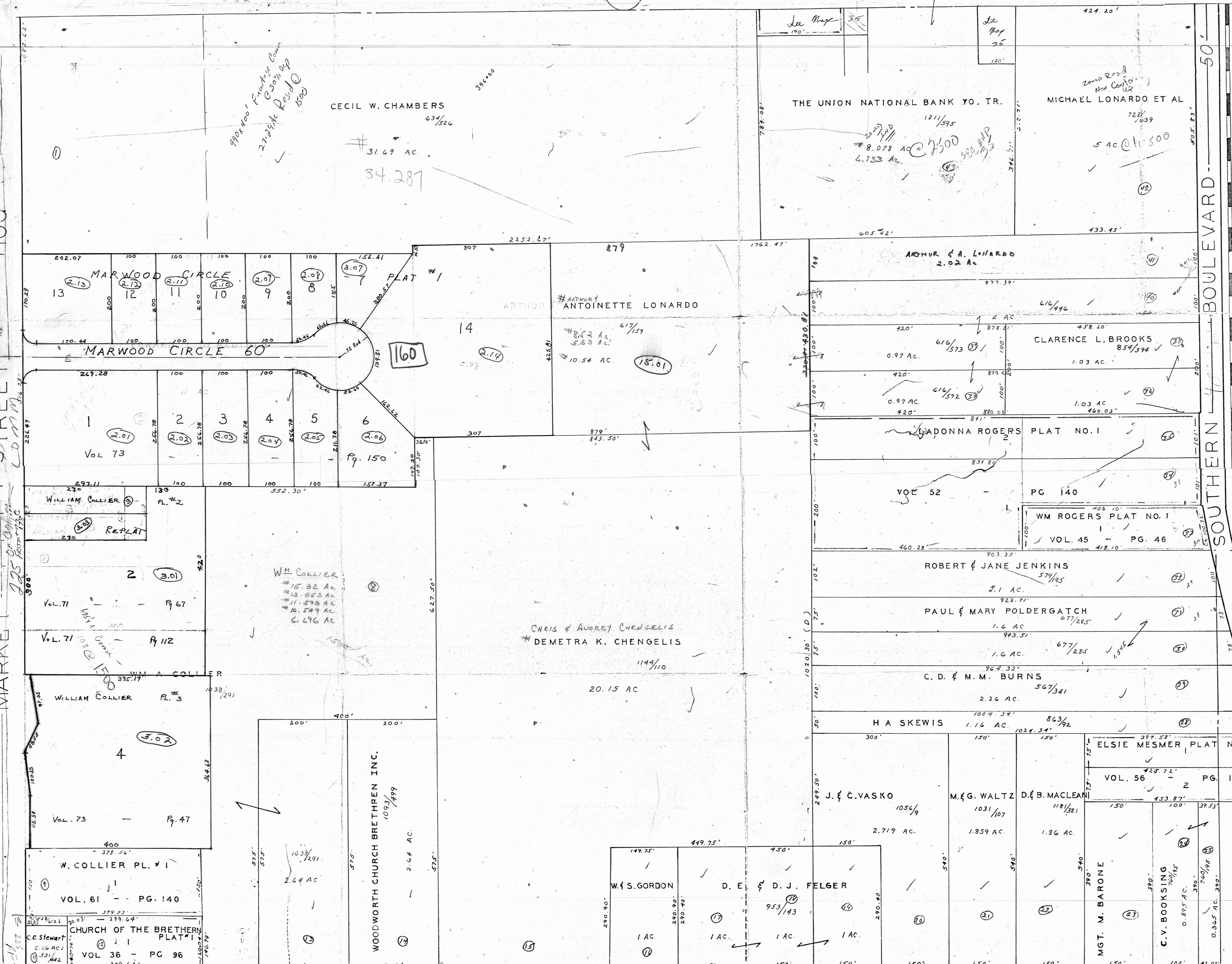
MICHAEL FITAS  
MAHONING COUNTY ENGINEER  
AND TAX MAP DRAFTSMAN  
REDRAWN BY: K.E. SNYDER  
OCT., 1971

STREET 100'  
MARKET STREET 100'

BOULEVARD 50'  
SOUTHERN BOULEVARD 44'

WESTERN RESERVE ROAD 40'

NOTE: Floor 4 to 6  
Along Market - same  
Remains of 2nd floor  
Common - same  
Common - same



970x1000' Frontage  
27.75% Resid  
1500'

CECIL W. CHAMBERS  
63 1/2  
# 31.69 AC.  
34.287

THE UNION NATIONAL BANK YO. TR.  
1211/595  
# 8.078 AC @ 7500  
6.733 AC

MICHAEL LONARDO ET AL  
728 1/2  
5 AC @ 1500

ARTHUR & ANTOINETTE LONARDO  
# 8.2 AC  
5.53 AC  
# 10.54 AC.  
15.01

CLARENCE L. BROOKS  
854/594  
1.03 AC.

DONNA ROGERS PLAT NO. 1  
VOL. 52 - PG. 140

WM ROGERS PLAT NO. 1  
VOL. 45 - PG. 46

ROBERT & JANE JENKINS  
2.1 AC.  
579/195

PAUL & MARY POLDERGATCH  
1.6 AC.  
677/285

C.D. & M.M. BURNS  
1.6 AC.  
677/285

H.A. SKEWIS  
1.16 AC.  
863/192

J. & C. VASKO  
2.719 AC.  
1056/9

M. & G. WALTZ  
1.859 AC.  
1031/107

D. & B. MACLEAN  
1.86 AC.  
1181/381

ELSIE MESMER PLAT NO. 1  
VOL. 56 - PG. 17

W.S. GORDON  
1 AC.  
D.E. & D.J. FELGER  
1 AC.  
1 AC.  
1 AC.

MGT. M. BARONE  
C.V. BOOKSING  
0.865 AC.

WOODWORTH CHURCH BRETHREN INC.  
1093/199  
2.64 AC.

W. COLLIER PL. # 1  
VOL. 61 - PG. 140

CHURCH OF THE BRETHREN  
PLAT # 1  
VOL. 36 - PG. 96

WILLIAM COLLIER R. # 3  
1033/1291

WILLIAM COLLIER R. # 2  
15.82 AC.  
13.853 AC.  
11.593 AC.  
10.549 AC.  
6.476 AC.

WILLIAM COLLIER R. # 2  
REPLAT

MARWOOD CIRCLE 60'  
PLAT # 1

MARWOOD CIRCLE 60'  
PLAT # 1