

ANNEXED TO CITY OF YOUNGSTOWN  
1-3-75 53-117-745

YOUNGSTOWN CITY LIMITS

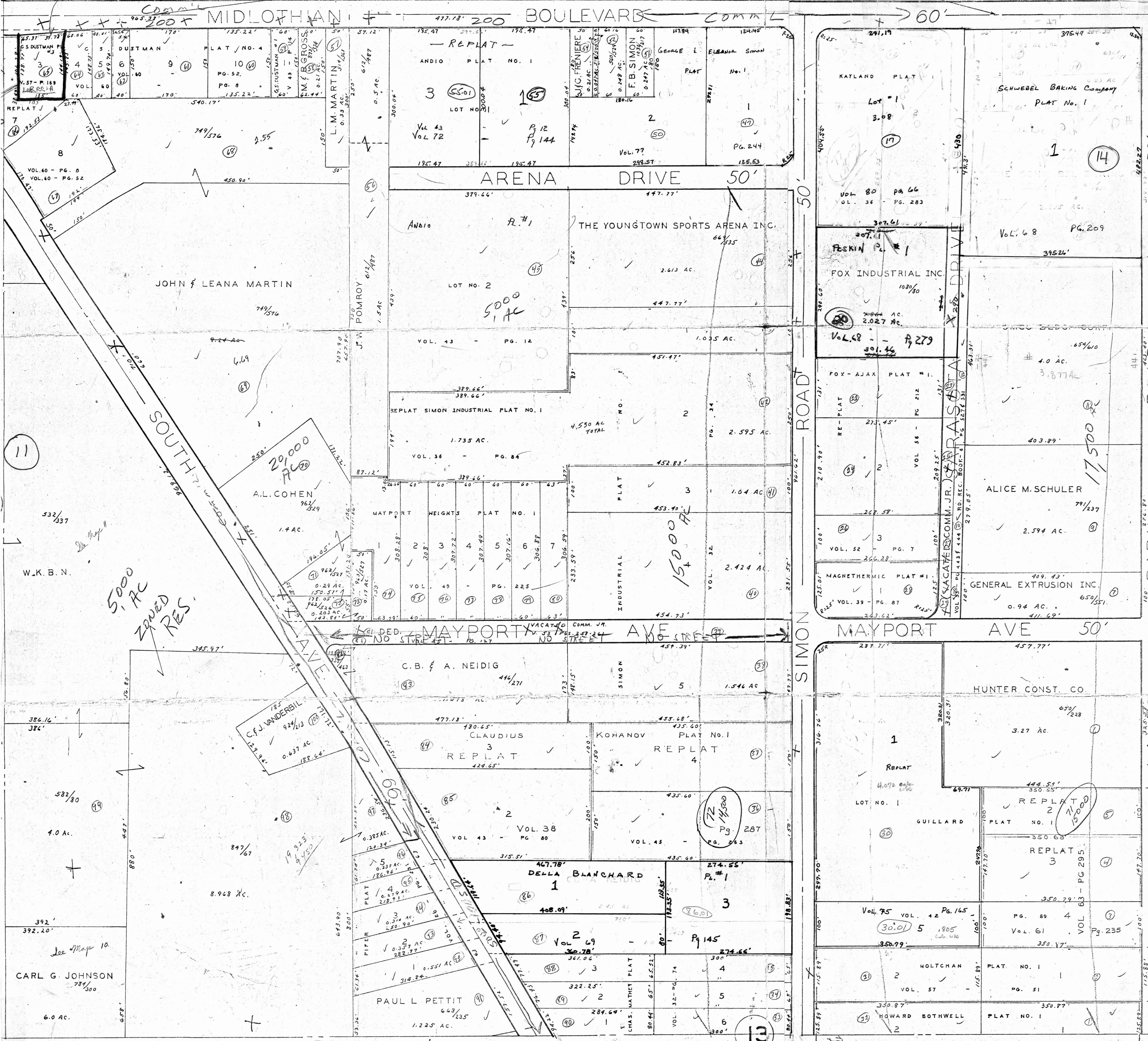


PLATE 12  
 G.L. 17 - DIV. 4  
 BOARDMAN TOWN  
 OFFICE OF COUNTY ENGINEER  
 940 BEARS DEN ROAD  
 YOUNGSTOWN, OHIO

6-20-06

SCALE 1"=100'  
 MICHAEL FITAS  
 MAHONING COUNTY ENGINEER  
 AND TAX MAP DRAFTSMAN  
 REDRAWN BY: K.E. SNYDER  
 JULY, 1971

ASKING 200<sup>00</sup> FF FOR  
 1ND LAND ON LAKE PARK