

31

PLATE 32

LOT-13-DIV. 2.
LOT-14-DIV. 2.

CANFIELD CITY
OFFICE OF COUNTY ENGINEER
940 BEARS DEN ROAD
YOUNGSTOWN, OHIO.

N. 635
7-11-06

NOTE: THIS
MAP HAS BEEN
PREPARED FOR NEW
PARCEL VS. ANY
CHANGES MAKE IN
THAT LIST, TOO.

SCALE - 1" = 100'

MICHAEL FITAS
MAHONING COUNTY ENGINEER
AND TAX MAP DRAFTMAN

REDRAWN BY: K.E. SNYDER

SEPT. - 1978

33

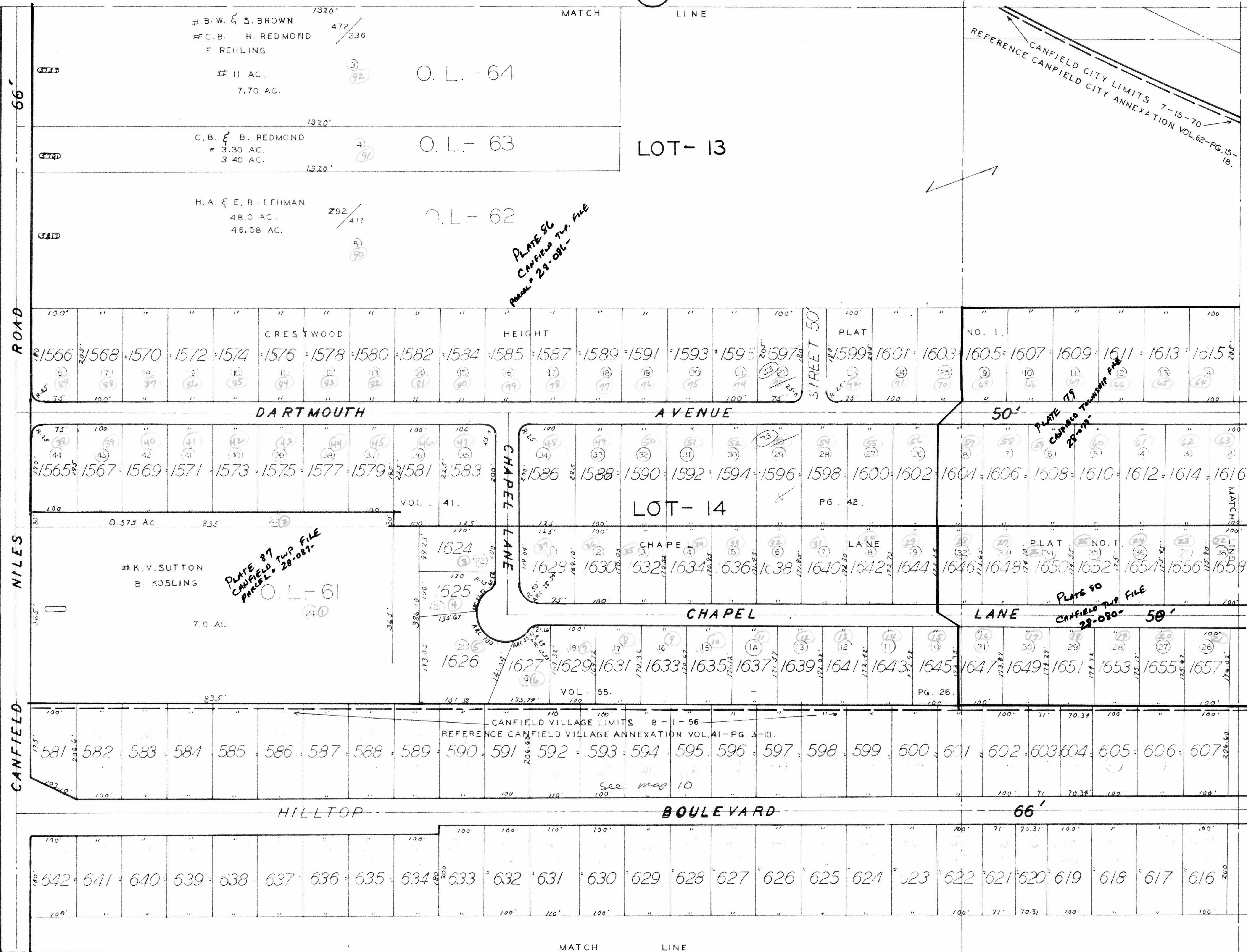


PLATE 90
CANFIELD TWP. FILE
PAGE # 28-086-

PLATE 87
CANFIELD TWP. FILE
PAGE # 28-087-

PLATE 90
CANFIELD TWP. FILE
PAGE # 28-090-

CANFIELD VILLAGE LIMITS 8-1-56
REFERENCE CANFIELD VILLAGE ANNEXATION VOL. 41-PG. 3-10.

See map 10

PRE 1984
POST 1985

10

12

66'

ROAD

NILES

CANFIELD

LOT-13

LOT-14

BOULEVARD

66'

MATCH LINE

MATCH LINE