

LOT 10 - DIV. 2.
LOT 11 - DIV. 2.
LOT 12 - DIV. 2.

CANFIELD CITY

OFFICE OF COUNTY ENGINEER

940 BEARS DEN ROAD
YOUNGSTOWN, OHIO.

635
7-11-06

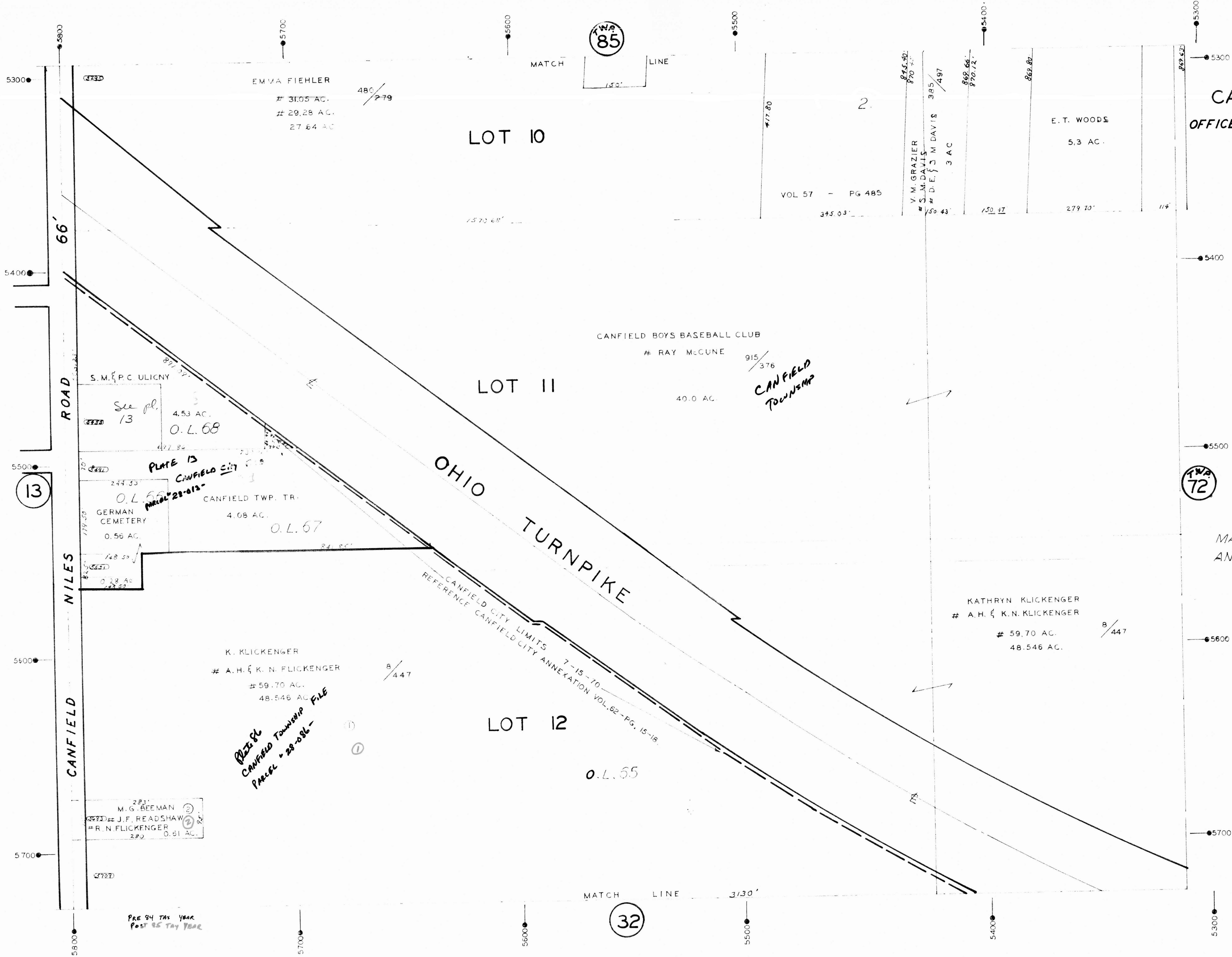
N

SCALE - 1" = 100'

MICHAEL FITAS

MAHONING COUNTY ENGINEER
AND TAX MAP DRAFTSMAN

REDRAWN BY: K.E. SNYDER
SEPT. - 1978



TWP 85

TWP 72

32

13

PLATE 31
CANFIELD TOWNSHIP FILE
PARCEL # 28-086

PRE 94 TAX YEAR
POST 95 TAX YEAR

PLATE 13
CANFIELD CITY

CANFIELD
TOWNSHIP

PLATE 31
CANFIELD TOWNSHIP FILE
PARCEL # 28-086

M.G. BEEMAN
J.F. READSHAW
R.N. FLICKENGER
0.61 AC.

K. KLICKENGER
A.H. & K.N. FLICKENGER
59.70 AC.
48.546 AC.

KATHRYN KLICKENGER
A.H. & K.N. KLICKENGER
59.70 AC.
48.546 AC.

See pl.
13
4.53 AC.
O.L. 68

GERMAN
CEMETERY
0.56 AC.

CANFIELD TWP. TR.
4.08 AC.
O.L. 67

LOT 10

LOT 11

LOT 12

O.L. 65

CANFIELD BOYS BASEBALL CLUB
RAY MCCUNE
915/376
40.0 AC.

EMMA FIEHLER
31.05 AC.
29.28 AC.
27.64 AC.

E.T. WOODS
5.3 AC.

V.M. GRAZIER
S.M. DAVIS
D.E. J.M. DAVIS
3 AC.

VOL 57 - PG 485

CANFIELD CITY LIMITS
REFERENCE CANFIELD CITY ANNEXATION VOL. 62 - PG. 15-18.

ROAD 66'

ROAD NILES

MATCH LINE

MATCH LINE

