

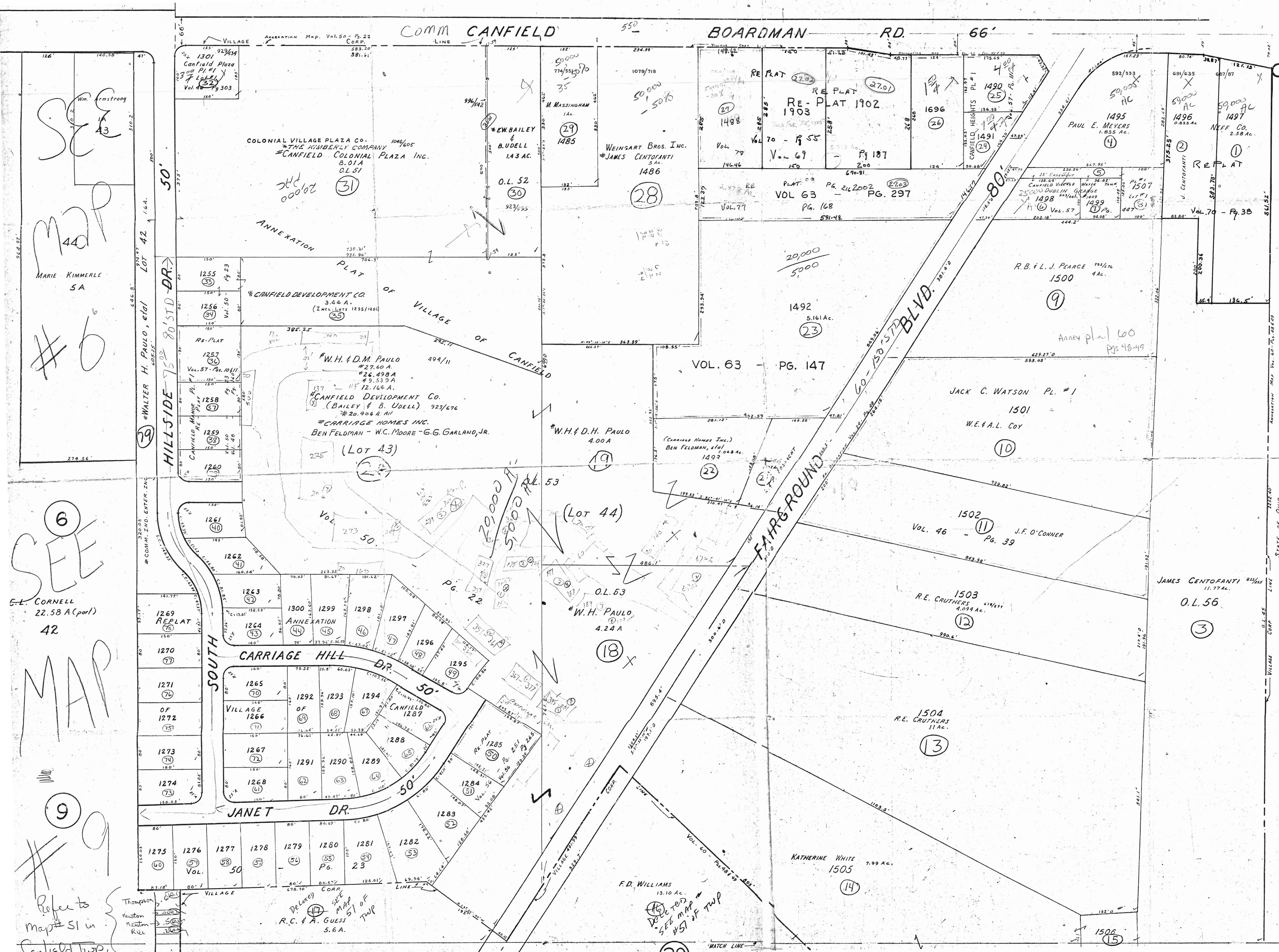
PLATE No. 28
CANFIELD VILL

OFFICE OF COUNTY ENGINEER
940 BEARS DEN ROAD
YOUNGSTOWN, OHIO

625
7-11-06



MAHONING COUNTY ENGINEER
AND TAX MAP DRAFT



SEE MAP #43
MARIE KIMMERLE 5A
#6

SEE MAP #42
G.L. CORNELL 22.58 A (part)
#9

Refer to map #51 in Canfield Twp.

COLONIAL VILLAGE PLAZA CO.
THE KIMBERLY COMPANY
#CANFIELD COLONIAL PLAZA INC.
8.01A
O.L. 51

ANNEXATION PLAT OF VILLAGE OF CANFIELD
#CANFIELD DEVELOPMENT CO.
3.44 A.
(INCL. LOTS 1255/1256)

#W.H. & D.M. PAULO 494/11
#CANFIELD DEVELOPMENT CO.
(BAILEY & B. UDELL) 923/676
#CARRIAGE HOMES INC.
BEN FELDMAN - W.C. MOORE - G.G. GARLAND, JR.
225 (LOT 43)

CARRIAGE HILL DR.
#W.H. & D.H. PAULO 4.00A
(CARRIAGE HOMES INC.)
BEN FELDMAN, 479/1088 AC.
1497
#W.H. PAULO 4.24 A
(LOT 44)

JANET DR.
#W.H. PAULO 4.00A
(CARRIAGE HOMES INC.)
BEN FELDMAN, 479/1088 AC.
1497
#W.H. PAULO 4.24 A
(LOT 44)

VILLAGE CORP.
#W.H. PAULO 4.00A
(CARRIAGE HOMES INC.)
BEN FELDMAN, 479/1088 AC.
1497
#W.H. PAULO 4.24 A
(LOT 44)

#E.W. BAILEY & B. UDELL 1.43 AC.
O.L. 52
923/553

#W.H. & D.M. PAULO 494/11
#CANFIELD DEVELOPMENT CO.
(BAILEY & B. UDELL) 923/676
#CARRIAGE HOMES INC.
BEN FELDMAN - W.C. MOORE - G.G. GARLAND, JR.
225 (LOT 43)

#W.H. & D.H. PAULO 4.00A
(CARRIAGE HOMES INC.)
BEN FELDMAN, 479/1088 AC.
1497
#W.H. PAULO 4.24 A
(LOT 44)

#W.H. PAULO 4.00A
(CARRIAGE HOMES INC.)
BEN FELDMAN, 479/1088 AC.
1497
#W.H. PAULO 4.24 A
(LOT 44)

#W.H. PAULO 4.00A
(CARRIAGE HOMES INC.)
BEN FELDMAN, 479/1088 AC.
1497
#W.H. PAULO 4.24 A
(LOT 44)

#W.H. PAULO 4.00A
(CARRIAGE HOMES INC.)
BEN FELDMAN, 479/1088 AC.
1497
#W.H. PAULO 4.24 A
(LOT 44)

WEINGART BROS. INC.
#JAMES CENTOFANTI 5 AC.
1486

#W.H. & D.M. PAULO 494/11
#CANFIELD DEVELOPMENT CO.
(BAILEY & B. UDELL) 923/676
#CARRIAGE HOMES INC.
BEN FELDMAN - W.C. MOORE - G.G. GARLAND, JR.
225 (LOT 43)

#W.H. & D.H. PAULO 4.00A
(CARRIAGE HOMES INC.)
BEN FELDMAN, 479/1088 AC.
1497
#W.H. PAULO 4.24 A
(LOT 44)

#W.H. PAULO 4.00A
(CARRIAGE HOMES INC.)
BEN FELDMAN, 479/1088 AC.
1497
#W.H. PAULO 4.24 A
(LOT 44)

#W.H. PAULO 4.00A
(CARRIAGE HOMES INC.)
BEN FELDMAN, 479/1088 AC.
1497
#W.H. PAULO 4.24 A
(LOT 44)

#W.H. PAULO 4.00A
(CARRIAGE HOMES INC.)
BEN FELDMAN, 479/1088 AC.
1497
#W.H. PAULO 4.24 A
(LOT 44)

RE PLAT 1903
RE PLAT 1902
1696
1498
1499
1497
1496
1495
1494
1493
1492
1491
1490
1489
1488
1487
1486
1485
1484
1483
1482
1481
1480
1479
1478
1477
1476
1475
1474
1473
1472
1471
1470
1469
1468
1467
1466
1465
1464
1463
1462
1461
1460
1459
1458
1457
1456
1455
1454
1453
1452
1451
1450
1449
1448
1447
1446
1445
1444
1443
1442
1441
1440
1439
1438
1437
1436
1435
1434
1433
1432
1431
1430
1429
1428
1427
1426
1425
1424
1423
1422
1421
1420
1419
1418
1417
1416
1415
1414
1413
1412
1411
1410
1409
1408
1407
1406
1405
1404
1403
1402
1401
1400
1399
1398
1397
1396
1395
1394
1393
1392
1391
1390
1389
1388
1387
1386
1385
1384
1383
1382
1381
1380
1379
1378
1377
1376
1375
1374
1373
1372
1371
1370
1369
1368
1367
1366
1365
1364
1363
1362
1361
1360
1359
1358
1357
1356
1355
1354
1353
1352
1351
1350
1349
1348
1347
1346
1345
1344
1343
1342
1341
1340
1339
1338
1337
1336
1335
1334
1333
1332
1331
1330
1329
1328
1327
1326
1325
1324
1323
1322
1321
1320
1319
1318
1317
1316
1315
1314
1313
1312
1311
1310
1309
1308
1307
1306
1305
1304
1303
1302
1301
1300
1299
1298
1297
1296
1295
1294
1293
1292
1291
1290
1289
1288
1287
1286
1285
1284
1283
1282
1281
1280
1279
1278
1277
1276
1275
1274
1273
1272
1271
1270
1269
1268
1267
1266
1265
1264
1263
1262
1261
1260
1259
1258
1257
1256
1255
1254
1253
1252
1251
1250
1249
1248
1247
1246
1245
1244
1243
1242
1241
1240
1239
1238
1237
1236
1235
1234
1233
1232
1231
1230
1229
1228
1227
1226
1225
1224
1223
1222
1221
1220
1219
1218
1217
1216
1215
1214
1213
1212
1211
1210
1209
1208
1207
1206
1205
1204
1203
1202
1201
1200
1199
1198
1197
1196
1195
1194
1193
1192
1191
1190
1189
1188
1187
1186
1185
1184
1183
1182
1181
1180
1179
1178
1177
1176
1175
1174
1173
1172
1171
1170
1169
1168
1167
1166
1165
1164
1163
1162
1161
1160
1159
1158
1157
1156
1155
1154
1153
1152
1151
1150
1149
1148
1147
1146
1145
1144
1143
1142
1141
1140
1139
1138
1137
1136
1135
1134
1133
1132
1131
1130
1129
1128
1127
1126
1125
1124
1123
1122
1121
1120
1119
1118
1117
1116
1115
1114
1113
1112
1111
1110
1109
1108
1107
1106
1105
1104
1103
1102
1101
1100
1099
1098
1097
1096
1095
1094
1093
1092
1091
1090
1089
1088
1087
1086
1085
1084
1083
1082
1081
1080
1079
1078
1077
1076
1075
1074
1073
1072
1071
1070
1069
1068
1067
1066
1065
1064
1063
1062
1061
1060
1059
1058
1057
1056
1055
1054
1053
1052
1051
1050
1049
1048
1047
1046
1045
1044
1043
1042
1041
1040
1039
1038
1037
1036
1035
1034
1033
1032
1031
1030
1029
1028
1027
1026
1025
1024
1023
1022
1021
1020
1019
1018
1017
1016
1015
1014
1013
1012
1011
1010
1009
1008
1007
1006
1005
1004
1003
1002
1001
1000

20,000
5,000
1492
5.161 Ac.
(23)

JACK C. WATSON PL. #1
1501
W.E. & A.L. COY
(10)

1502
VOL. 46 - PG. 39
J.F. O'CONNOR
(11)

1503
R.E. CRUTHERS 4.094 AC.
(12)

1504
R.E. CRUTHERS 11 AC.
(13)

PAUL E. MEYERS 1.835 AC.
1495
(4)

R.B. & L.J. PEARCE 7 1/2 AC.
1500
(9)

1501
W.E. & A.L. COY
(10)

1502
VOL. 46 - PG. 39
J.F. O'CONNOR
(11)

1503
R.E. CRUTHERS 4.094 AC.
(12)

1504
R.E. CRUTHERS 11 AC.
(13)

592/333
50,000 AC
1495
(4)

R.B. & L.J. PEARCE 7 1/2 AC.
1500
(9)

JACK C. WATSON PL. #1
1501
W.E. & A.L. COY
(10)

1502
VOL. 46 - PG. 39
J.F. O'CONNOR
(11)

1503
R.E. CRUTHERS 4.094 AC.
(12)

1504
R.E. CRUTHERS 11 AC.
(13)

590/000 AC
1496
(2)

R.B. & L.J. PEARCE 7 1/2 AC.
1500
(9)

JACK C. WATSON PL. #1
1501
W.E. & A.L. COY
(10)

1502
VOL. 46 - PG. 39
J.F. O'CONNOR
(11)

1503
R.E. CRUTHERS 4.094 AC.
(12)

1504
R.E. CRUTHERS 11 AC.
(13)

590/000 AC
1497
(1)

R.B. & L.J. PEARCE 7 1/2 AC.
1500
(9)

JACK C. WATSON PL. #1
1501
W.E. & A.L. COY
(10)

1502
VOL. 46 - PG. 39
J.F. O'CONNOR
(11)

1503
R.E. CRUTHERS 4.094 AC.
(12)

1504
R.E. CRUTHERS 11 AC.
(13)