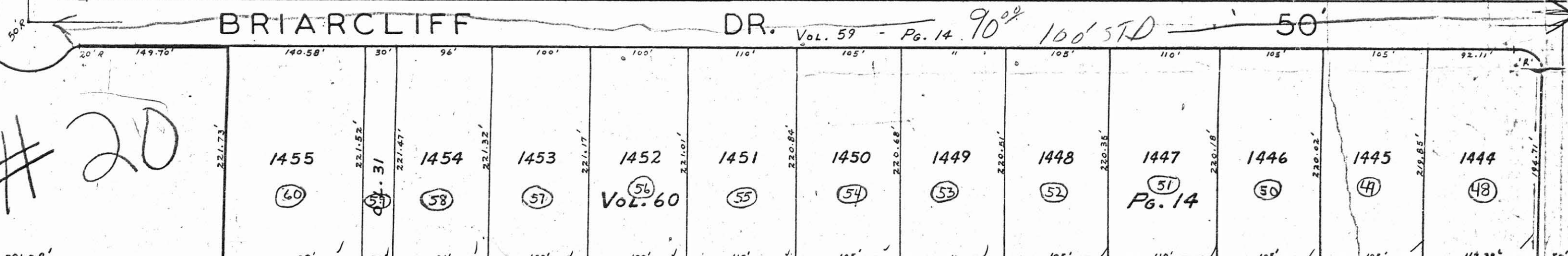
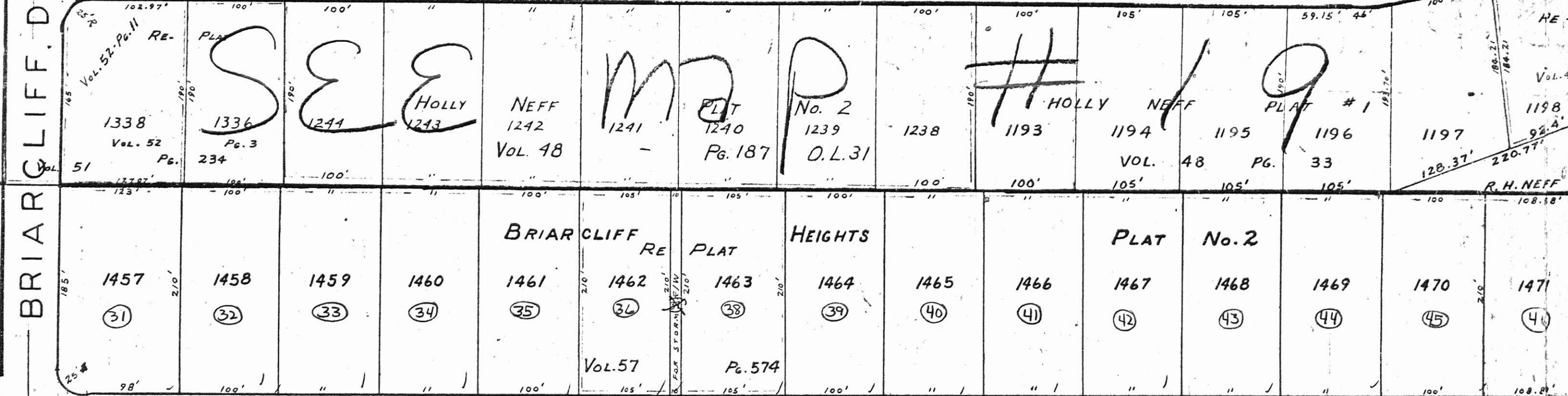


#18  
#20  
#22  
MAP  
#19

BRADFORD DR. 60'



CLIFFORD E. FISHER  
E. L. DAWSON  
30.37 AC.  
23.677 A.  
23.617 A.  
13.617 A.  
500/526 765/503 1775 ±

BOARD OF EDUCATION CANFIELD SCHOOL DIST.

O.L. 54  
15.72 A.



CANFIELD LOCAL SCHOOL DISTRICT  
30.424 A.

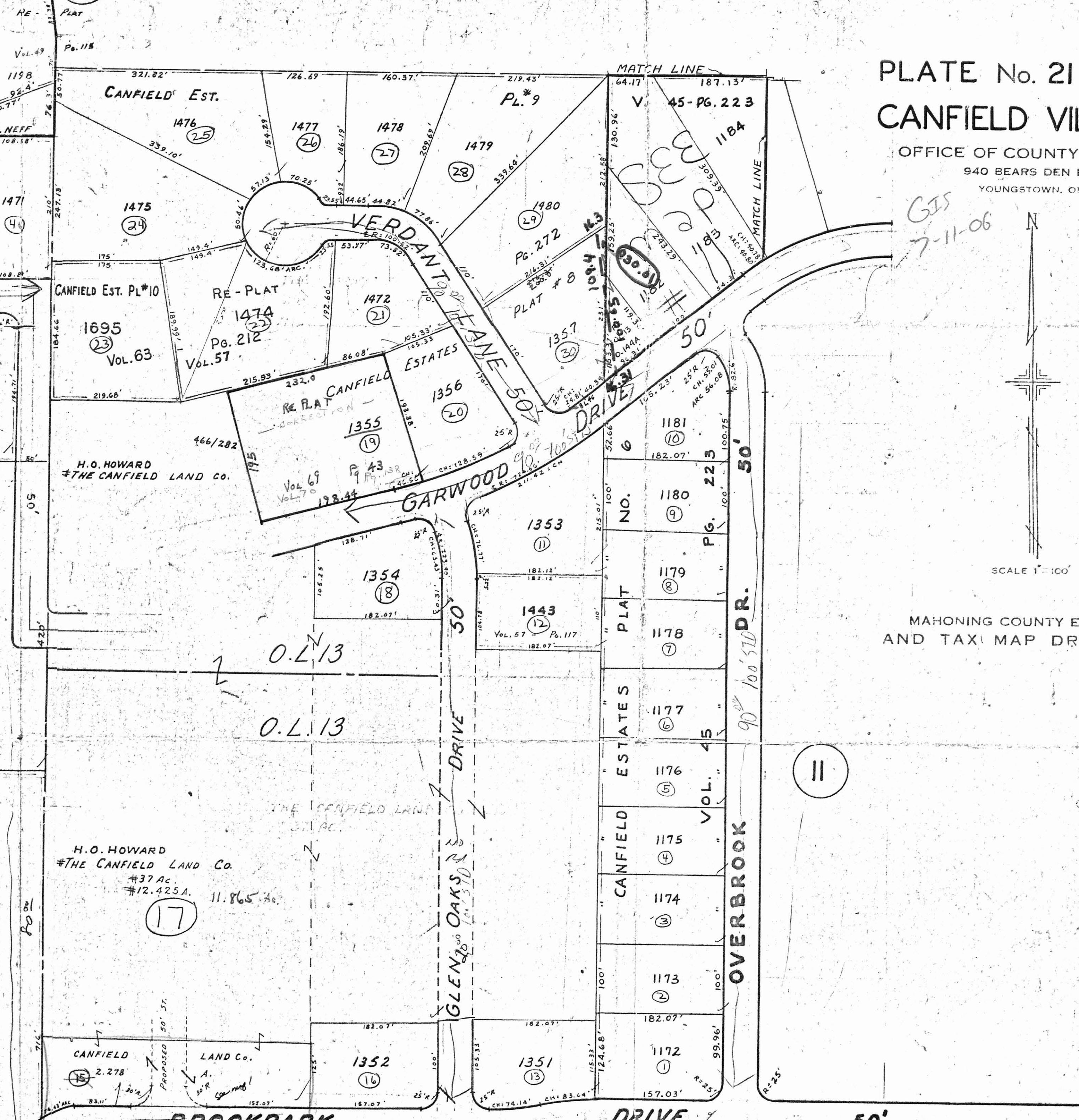
CANFIELD HIGH SCHOOL PLAT NO. 1

VILLAGE LOT NO 1341



VOL. 52 - PG. 46

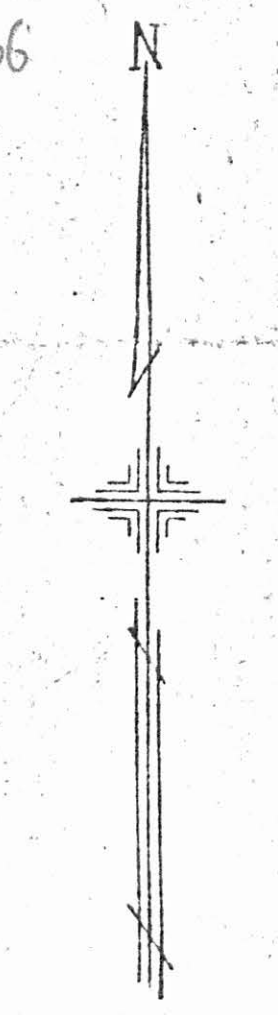
LOT 33



# PLATE No. 21 CANFIELD VILLAGE

OFFICE OF COUNTY ENGINEER  
940 BEARS DEN ROAD  
YOUNGSTOWN, OHIO

GIS  
7-11-06



MAHONING COUNTY ENGINEER  
AND TAXI MAP DRAFTSMAN

CANFIELD STEEL CORP  
9.525 A. (LFT)  
# LOT 20

