

O.L. 23
OWNER ON 14

PLATE No. 18 CANFIELD VILLAGE

OFFICE OF COUNTY ENGINEER
940 BEARS DEN ROAD
YOUNGSTOWN, OHIO
GIS 7-11-06

MAHONING COUNTY ENGINEER
AND TAX MAP DRAFTSMAN

17

MATCH LINE

M.B. & M.E. CHIDESTER 63.83 A. 203/192
M. & M. ESCHLIMAN 515/166
BEULAH M. STAMBAUGH 533/70
STANDARD SLAG CO.

M.E. CHISTER 60 A 203/192
M. & M. ESCHLIMAN 515/166
BEULAH M. STAMBAUGH 533/70
STANDARD SLAG CO.

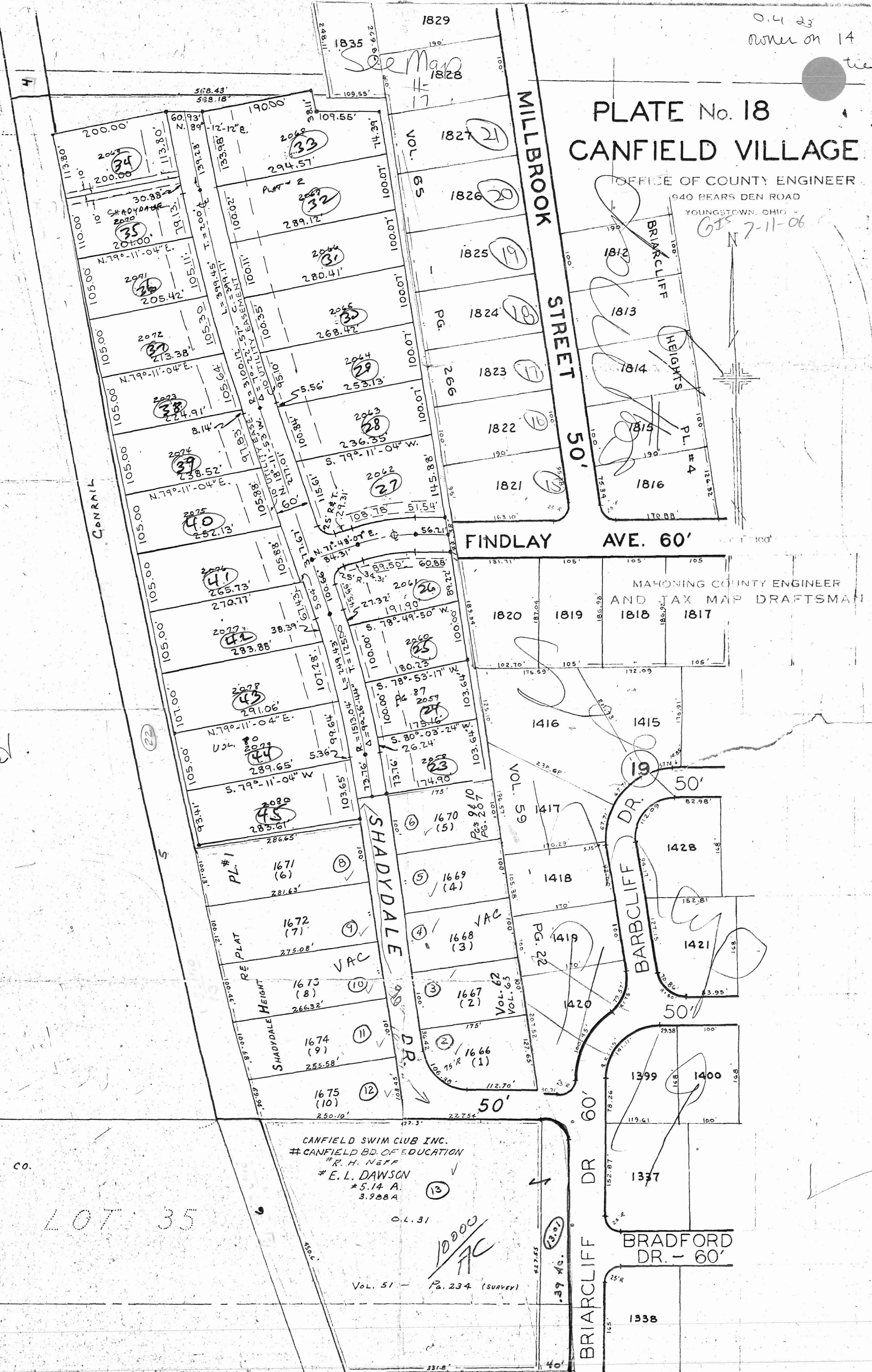
O.L. 23

1000 A

14

CANFIELD VILLAGE CORPORATION LINE
1660

MATCH LINE



229.02 229.02 874.4

STANDARD SLAG CO.

LOT 36

STANDARD SLAG CO.

LOT 35

CANFIELD SWIM CLUB INC.
CANFIELD BD. OF EDUCATION
R. H. NEFF
E. L. DAWSON
5.14 A.
3.288 A

O.L. 31
1000 AC
Vol. 51 - P. 234 (Survey)

MATCH LINE

20