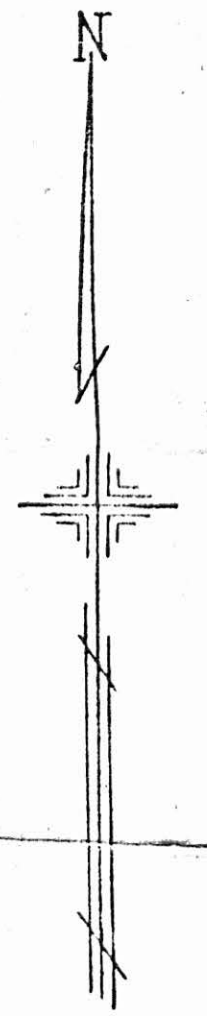


PLATE No. 15
CANFIELD VILLAGE

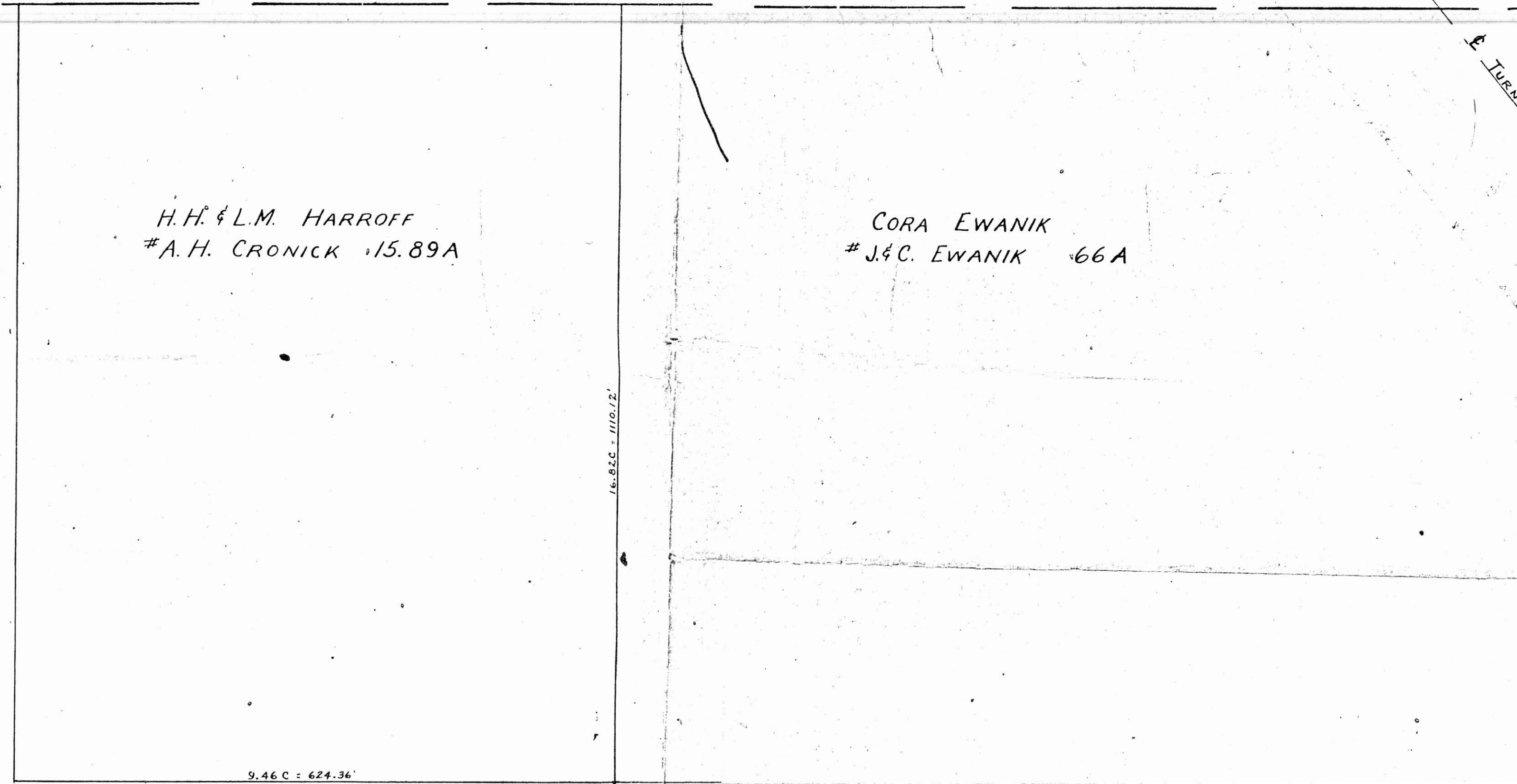
OFFICE OF COUNTY ENGINEER
940 BEARS DEN ROAD
YOUNGSTOWN, OHIO

615
7-11-06



SCALE 1"=100'

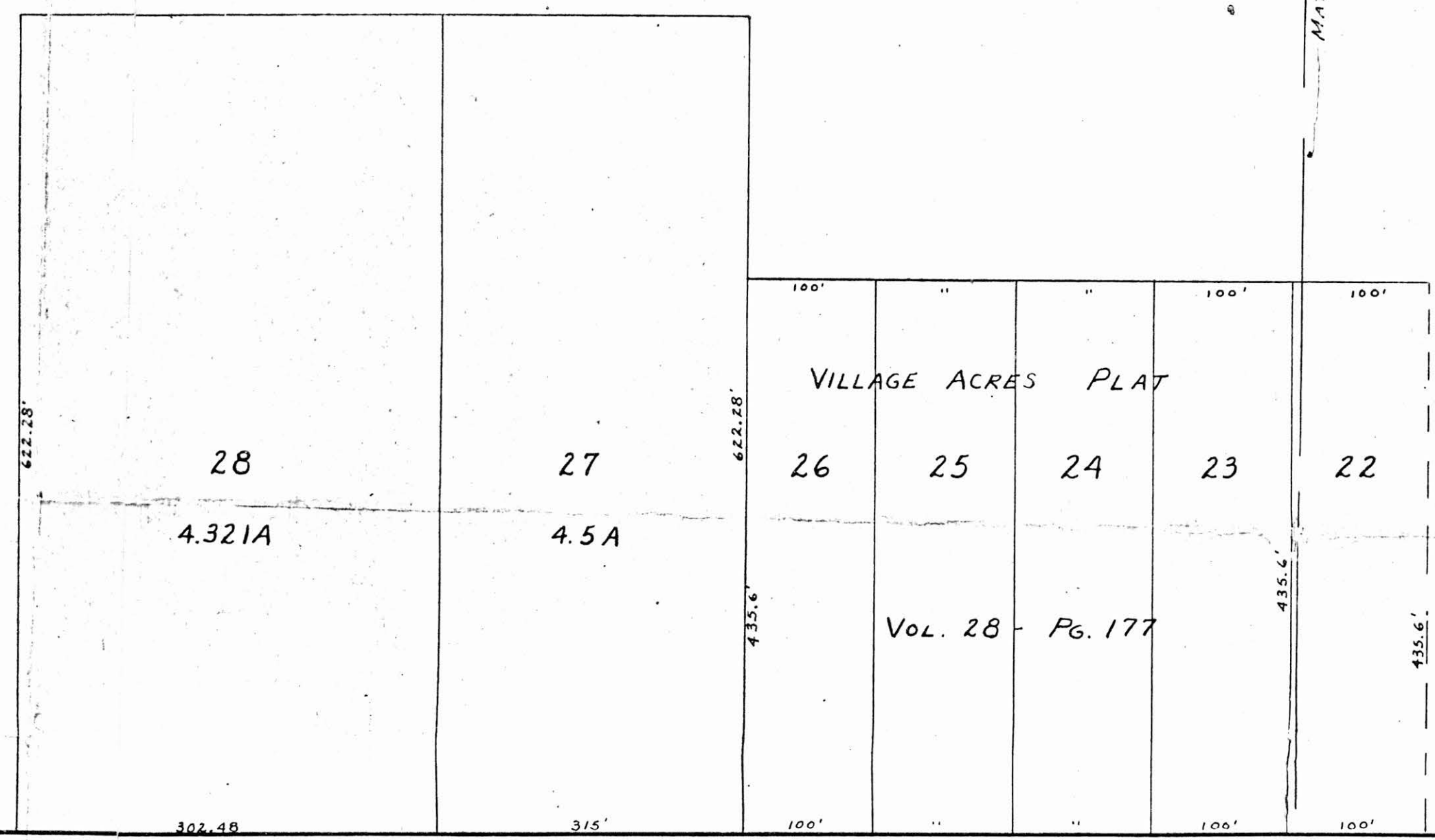
SAMUEL GOULD, JR.
MAHONING COUNTY ENGINEER
AND TAX MAP DRAFTSMAN



MAHONING COUNTY INFIRMARY 225.3A

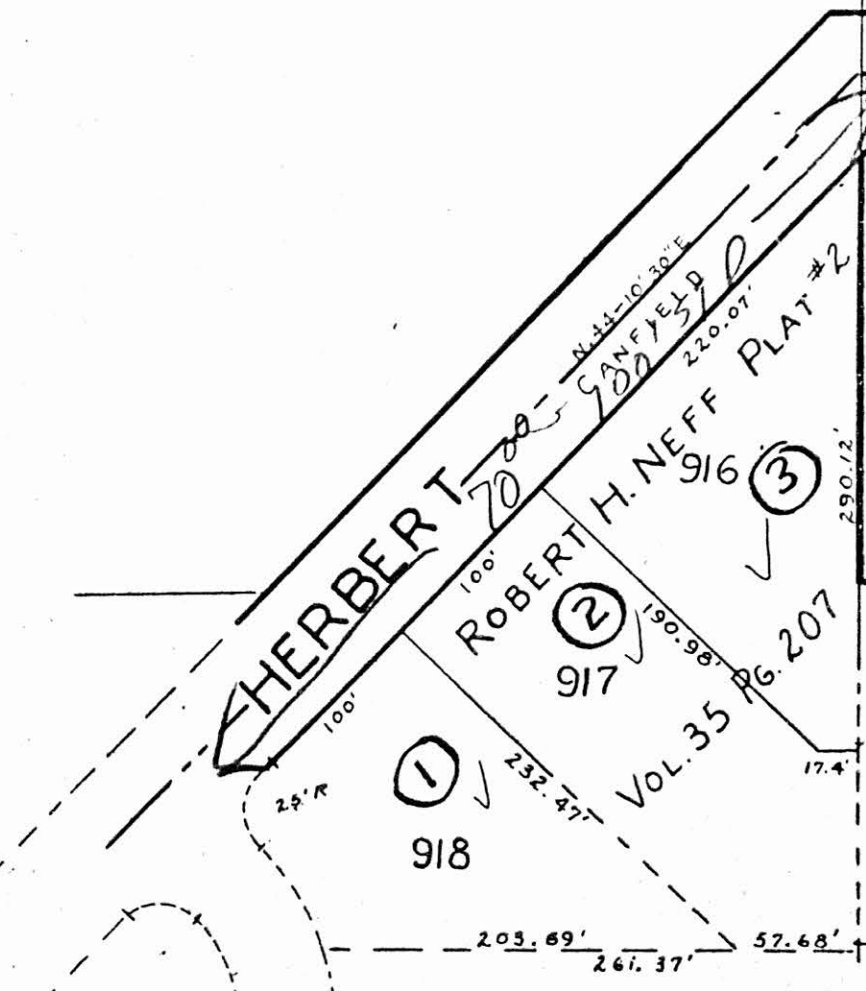
④ 210.742 Ac.
ANNEXED TO CITY OF CANFIELD
Vol. 77 Pg. 74
DL 75

14



VILLAGE CORP. ROAD 60' - 150' 5 15" 60'

SEE MAP 13
F.A. MINTER 60A
O.L. 19



16