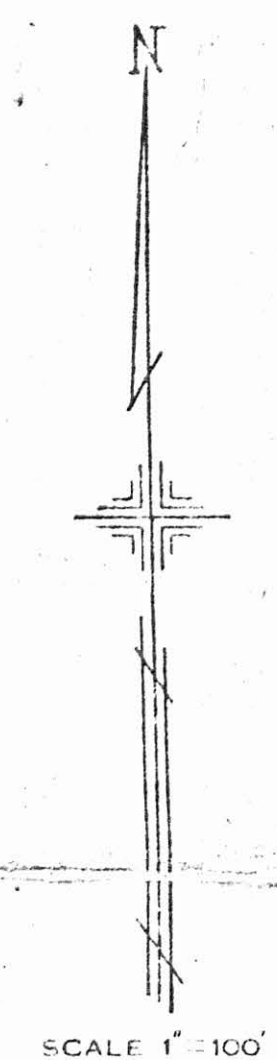


PLATE No. 13
CANFIELD VILLAGE

OFFICE OF COUNTY ENGINEER
940 BEARS DEN ROAD
YOUNGSTOWN, OHIO

695
7-11-06

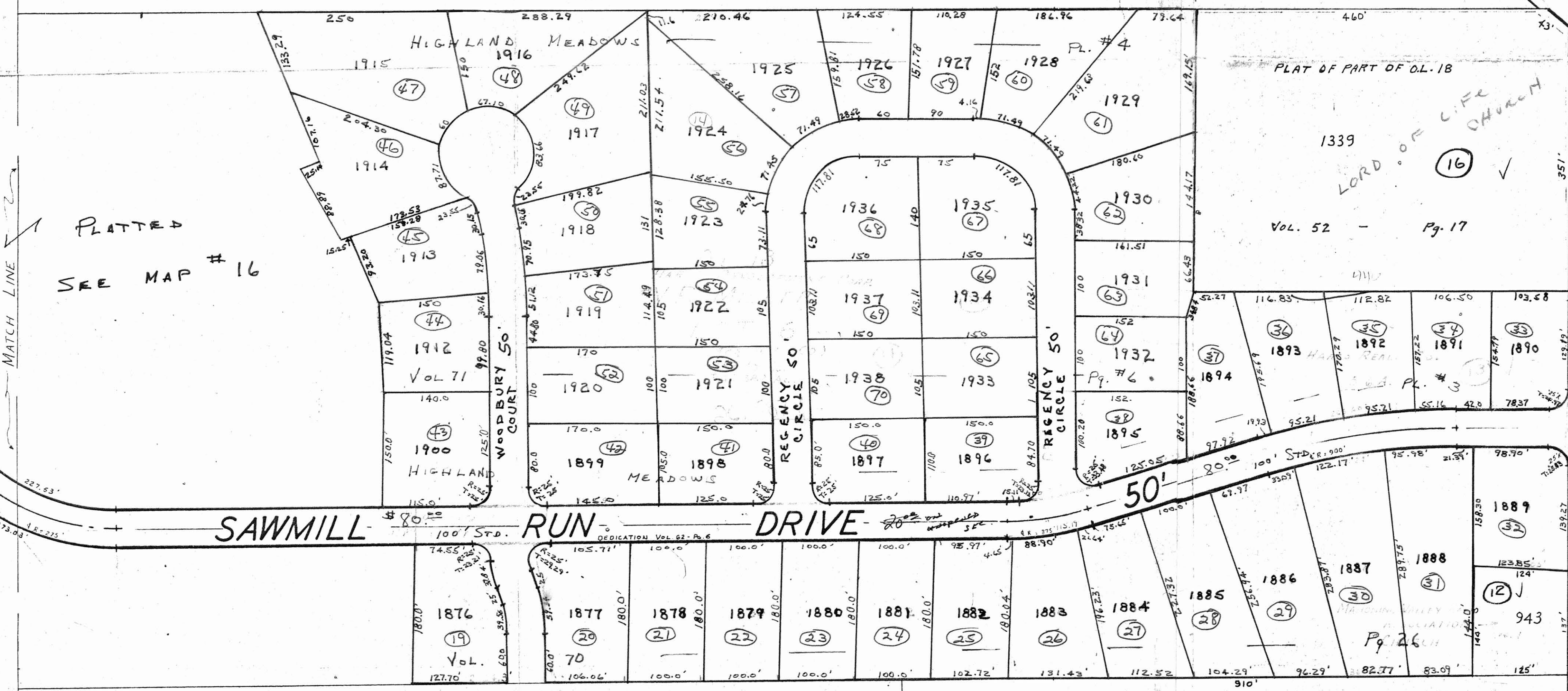


MAHONING COUNTY ENGINEER
AND TAX MAP DRAFTSMAN

J.L. RYMER
O.L. 19
#F.F. MINTER
LOT 7
52.489A.

E. FIEHLER 31.05A

LOT 10



CANFIELD ROAD 66' NILES ROAD 60-150-572

PLAT OF PART OF O.L. 18
1339
LORD OF LIFE CHURCH
Vol. 52 - Pg. 17

1998
Vol. 75 - Pg. 25
Vol. 77 - Pg. 15L
REPLAT
253.95

S.M. & PEARL C. ULWY
PL. 01 A & B
RS. 7.2 AC. (NEW SURVEY)
3.188 AC.
3.075 AC.
O.L. 68
Vol. 71 - Pg. 34
71.01

(3.27) 244.53
O.L. 66
GERMAN CEMETERY
.56A
73

GEO. WELENDORPH, et al TR.
4.08 Ac.
O.L. 67

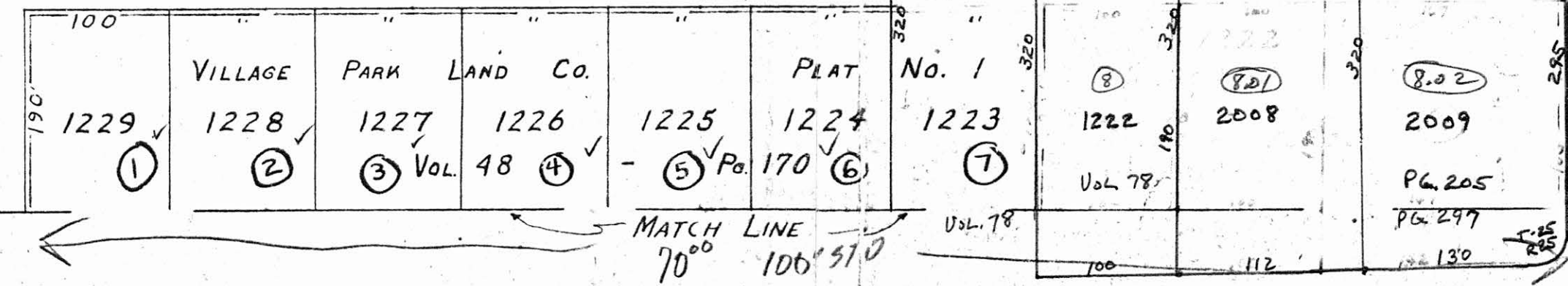
O.L. 17
R.N. FLICKINGER

O.L. 16
59.98 A
KATHRYN N. FLICKINGER
LOT 5

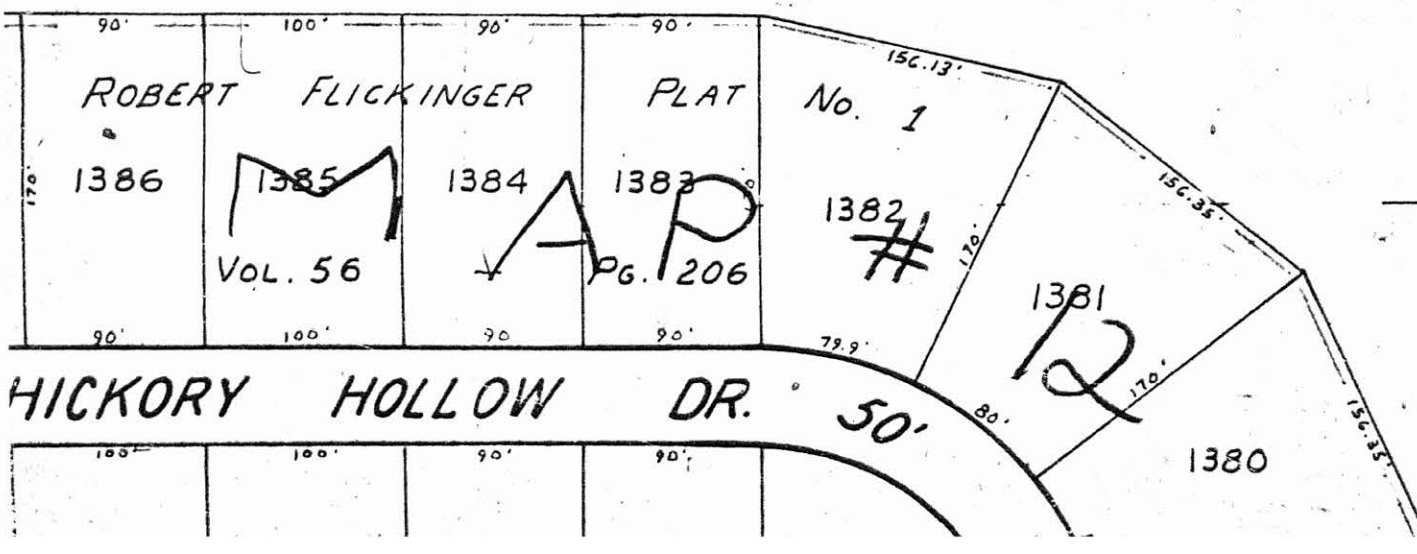
A.H. & K.N. FLICKINGER
GRACE HARDING #59.70A
48.546A

(LOT 12)
O.L. 65

ROUTED ON MAP # 86
IN TWP



12



PLATTED
SEE MAP # 16

16

18

17

16

14

11

71.01

72

73

11

10

9

8

7.01

2008

8.02

2009

Pg. 205

Pg. 297

130

MATCH LINE
70° 106' 57"