

GIS  
6-9-06  
**84**  
**CANFIELD TOW**

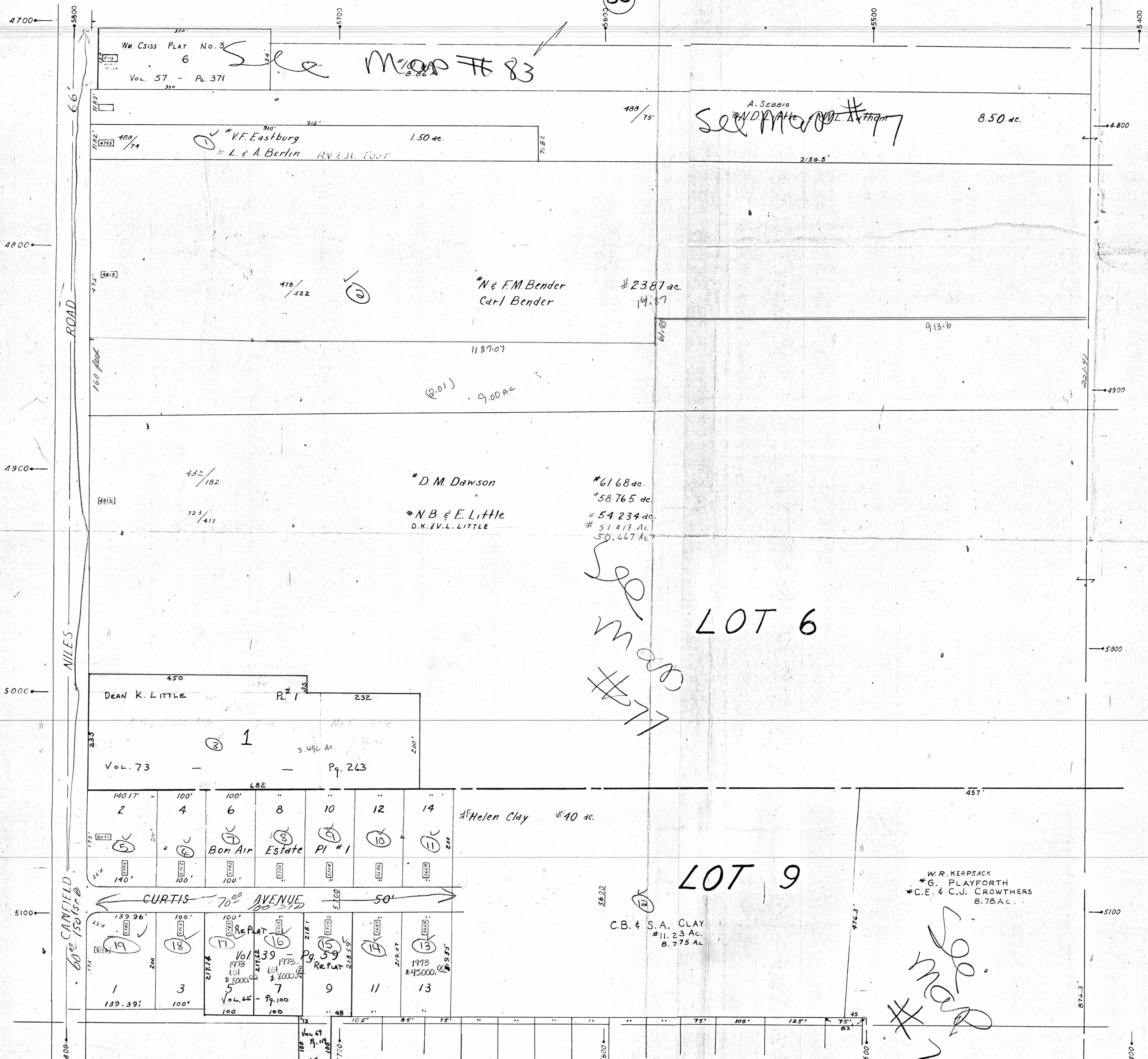
OFFICE OF COUNTY ENGINEER  
940 DEARS DEN ROAD  
MUNING-TOWNSHIP, OHIO

G.L. 6 DIV. 3  
G.L. 9 DIV. 3

FAMILY CODED, JR.  
MAHONING COUNTY ENGINEER  
TAX MAP DRAFT

**LEGEND**

- (44) PLATE NUMBER
- 4300 HOUSE NUMBERING
- [#202] HOUSE NUMBER



(85)