

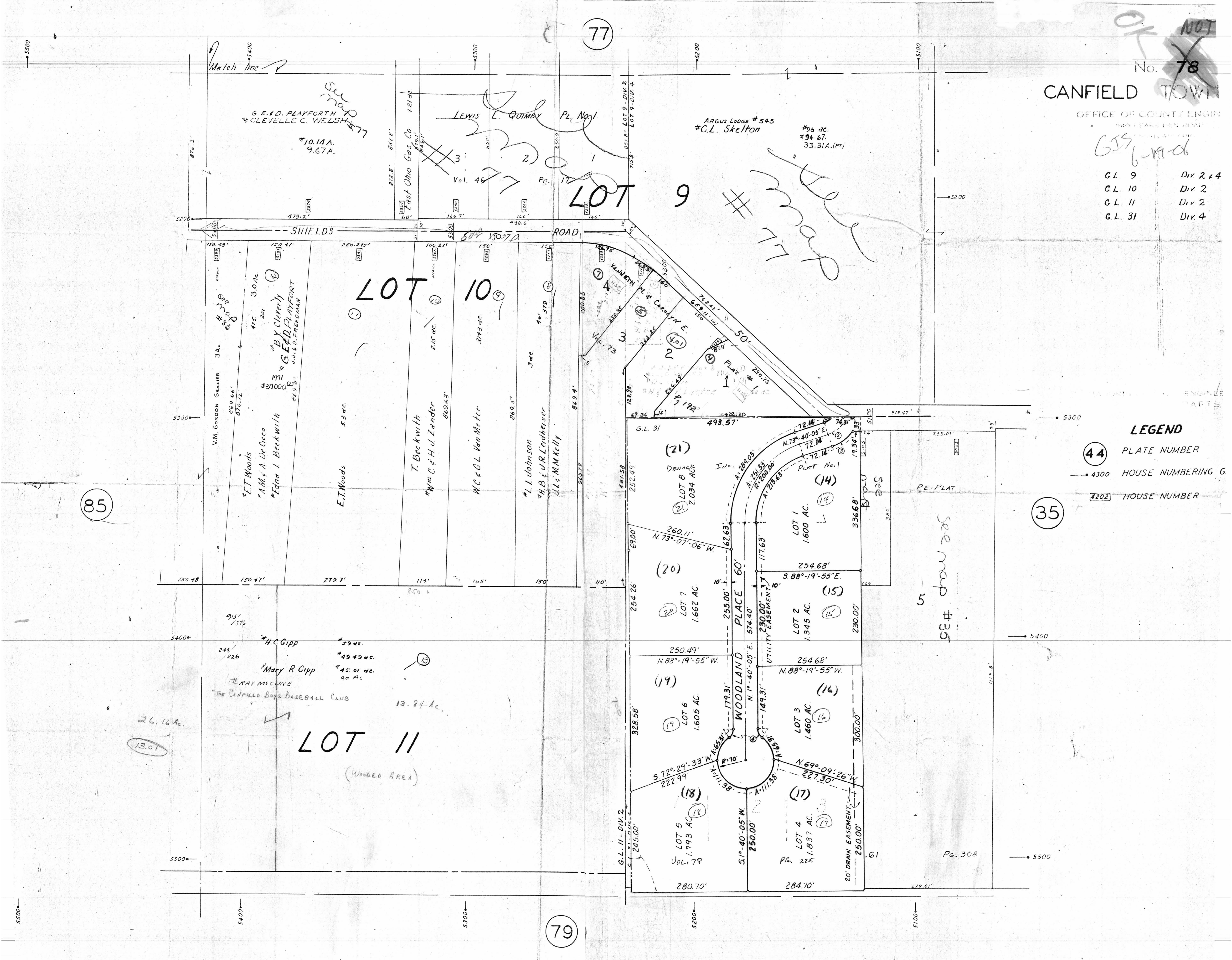
97
~~NOT~~
No. 78
CANFIELD TOWN

OFFICE OF COUNTY ENGINEER

655-19-06
C.L. 9 Div. 2 & 4
C.L. 10 Div. 2
C.L. 11 Div. 2
C.L. 31 Div. 4

LEGEND

- (44) PLATE NUMBER
- 4300 HOUSE NUMBERING G
- 2202 HOUSE NUMBER



Match line
G.E.D. PLAYFORTH
CLEVELLE C. WELSH #77
#10.14A.
9.67A.

LEWIS E. QUIMBY PL No. 1

ARGUS LODGE # 54.5
C.L. Skelton
#96 ac.
#94-67.
33.31A.(PT)

LOT 9

See map #77

LOT 10

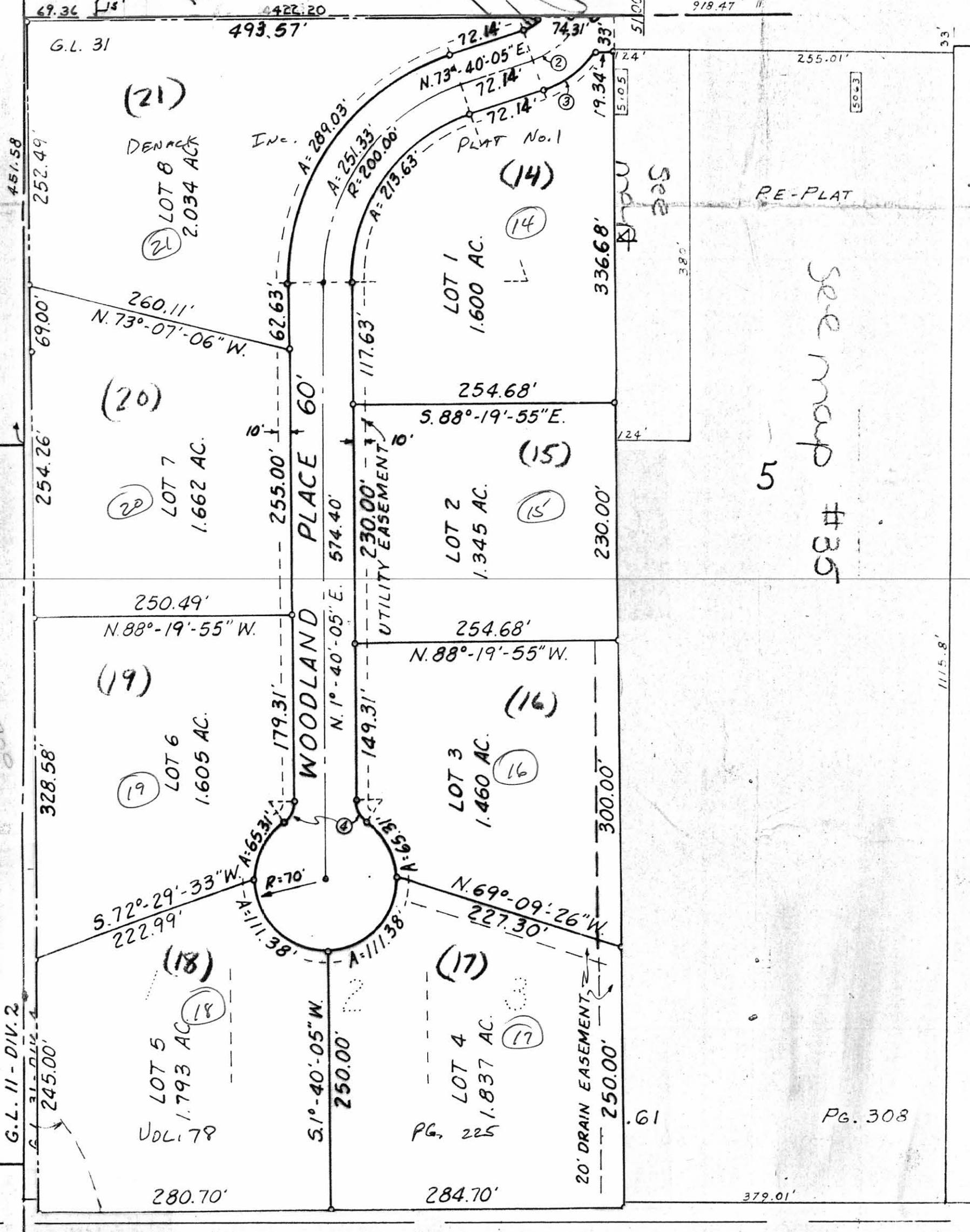
G.E.D. PLAYFORTH
BY CLERK
#371000
#1911
#AM & A De Cecco
#Edna I Beckwith
J. J. D. FREEDMAN

T. Beckwith
#Wm C. & H. J. Zander
W.C. & G.L. Van Meter
#L.L. Johnson
#H.B. & J.R. Landkaiser
J.L. WIMACILLY

H.C. Gipp #39 ac.
Mary R Gipp #49.49 ac.
#MARY MCGUIRE
THE CANFIELD BOYS BASEBALL CLUB
13.84 Ac.

LOT 11

(WOODEN AREA)



See map #35

35

85

79