

76

77

Canfield TOWN

OFFICE OF COUNTY ENGINEER
94 E. PARS DEN ROAD
CANTON, OHIO 44705

GIS
6-19-06

DIV. 2nd - G.L.
DIV. 3rd - G.L.
DIV. 4th - G.L.

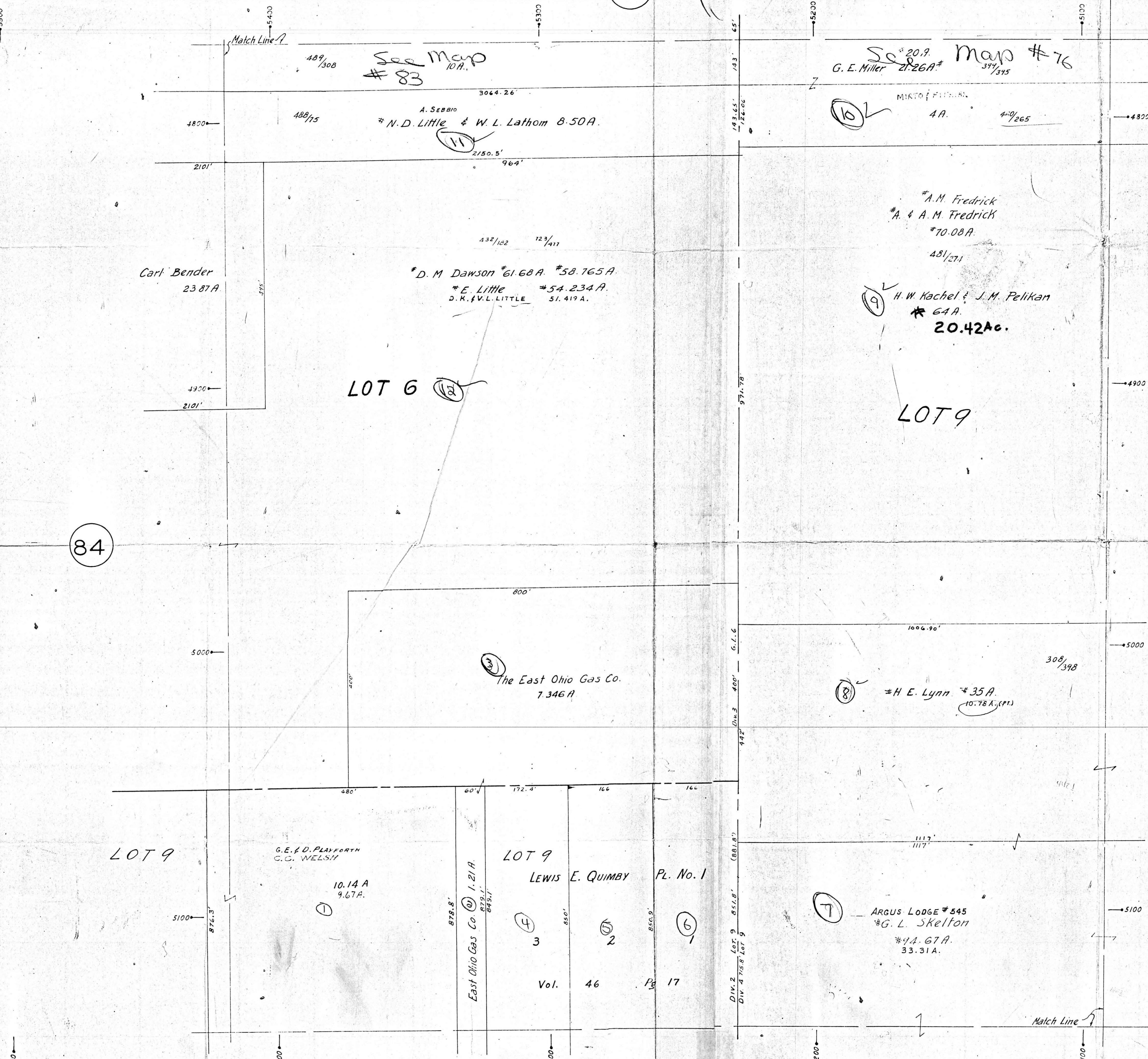
NATIONAL FIRE ENGINE
AND TAX MAP DRAFTS

LEGEND

- (44) PLATE NUMBER
- 4300 HOUSE NUMBERING
- 4202 HOUSE NUMBER

34

84



See Map #83

See Map #76

A. Sebbro
N.D. Little & W.L. Lathom 8.50A.

G.E. Miller #20.9
#2.26A

Carl Bender
23.87A

D.M. Dawson #61.68A #58.765A
E. Little #54.234A
D.R. F.V.L. LITTLE 51.419A.

A.M. Fredrick
A. & A.M. Fredrick
#70.08A

H.W. Kachel & J.M. Pelikan
#64A
20.42Ac.

LOT 6

LOT 9

The East Ohio Gas Co.
7.346A

H.E. Lynn #35A
10.78A (PT.)

LOT 9

G.E. & D. PLAYFORTH
C.C. WELSH
10.14A
9.67A.

LOT 9
LEWIS E. QUIMBY
Pl. No. 1

ARGUS LODGE #545
#G.L. SKELTON
#4A.67A
33.31A.

Shields Rd. 50'-150' sth 78