

PLATE No. 75 CANFIELD TOW

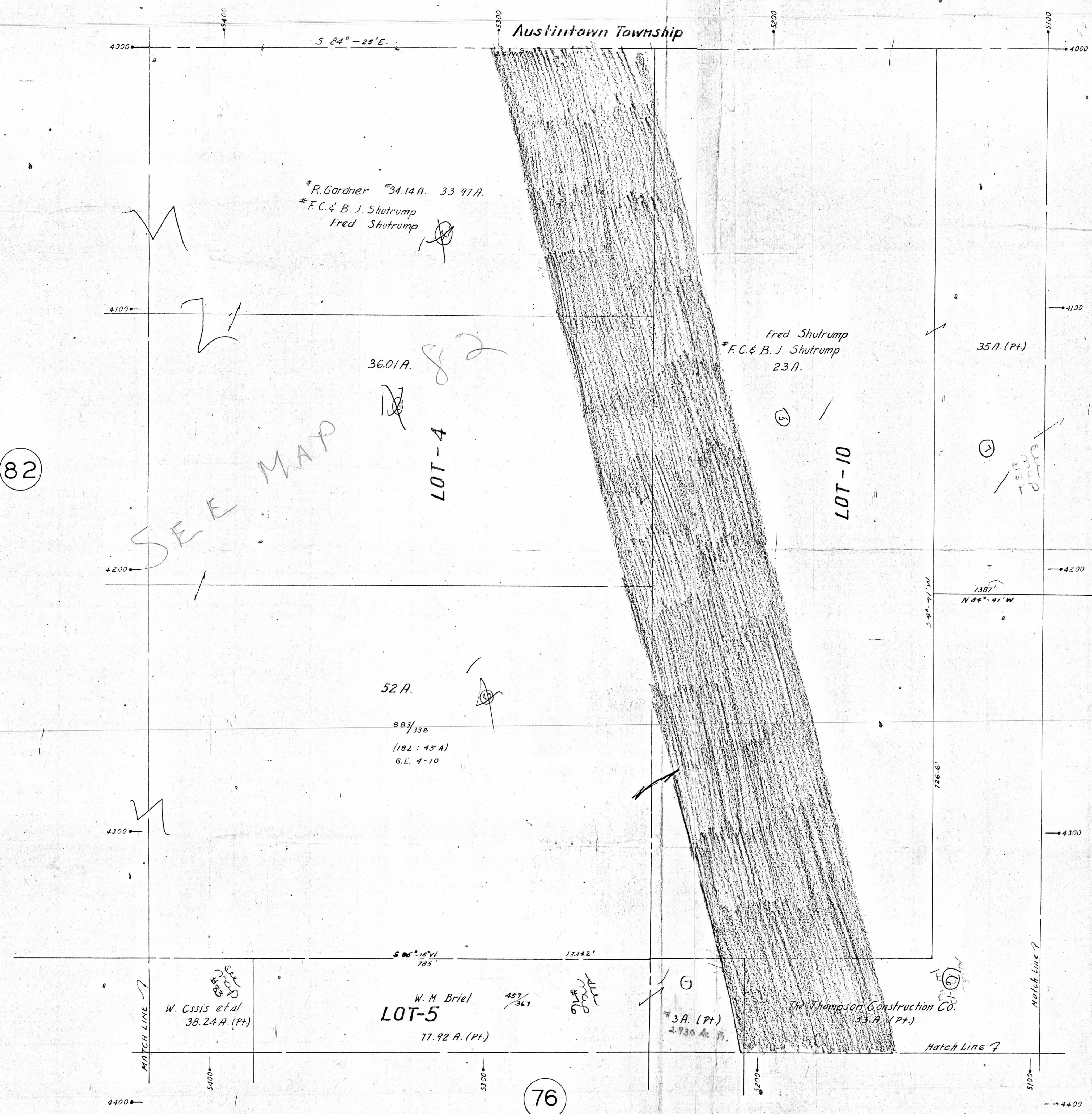
OFFICE OF COUNTY ENG
940 BEARD BLDG
G.S. 6-19-08
G.L. 10 DIV. 4
G.L. 4 DIV. 3
G.L. 5 DIV. 3

LEGEND
44 PLATE NUMBER
4300 HOUSE NUMBER IN
4202 HOUSE NUMBER

82

32

76



R. Gardner #34.14A. 33.97A.
F.C. & B. J. Shutrump
Fred Shutrump

36.01A. 82

SEE MAP

LOT-4

Fred Shutrump
F.C. & B. J. Shutrump
23A.

LOT-10

52A.

883/338
(182 : 45 A)
G.L. 1-10

W. C. S. et al
38.24A. (Pt.)

W. M. Briel
LOT-5
77.92 A. (Pt.)

3A. (Pt.)
2.730 Ac. Ft.

The Thompson Construction Co.
53A. (Pt.)

Match Line 7