

CANFIELD TOWNSHIP

LOTS - 23-24 - DIV - 2

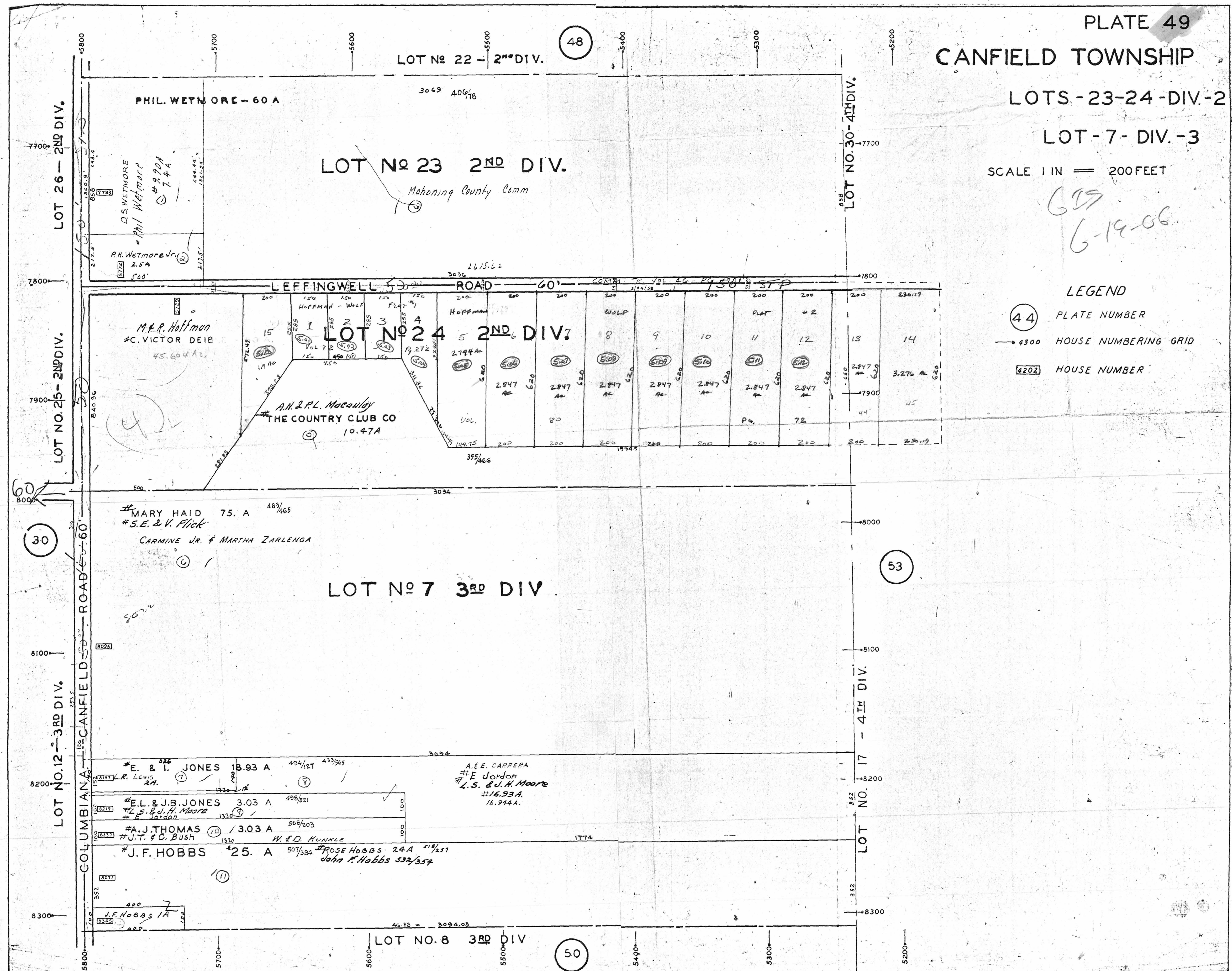
LOT - 7 - DIV - 3

SCALE 1 IN = 200 FEET

69
6-19-06

LEGEND

- (44) PLATE NUMBER
- 4300 HOUSE NUMBERING GRID
- 4202 HOUSE NUMBER



LOT NO 22 - 2ND DIV.

48

PHIL. WETMORE - 60 A

LOT NO 23 2ND DIV.

Mahoning County Comm

LOT NO 24 2ND DIV?

A.N. & P.L. Macaulay
THE COUNTRY CLUB CO
10.47 A

LOT NO 7 3RD DIV

LOT NO 8 3RD DIV

50

LOT 26 - 2ND DIV.

LOT NO 25 - 2ND DIV.

30

LOT NO 12 - 3RD DIV.

LOT NO 30 - 4TH DIV.

LOT NO 17 - 4TH DIV.

53

COLUMBIANA CANFIELD ROAD

LEFFINGWELL ROAD

7700

7800

7900

8100

8200

8300

7700

7800

7900

8000

8100

8200

8300

5800 5700 5600 5500 5400 5300 5200

5800 5700 5600 5500 5400 5300 5200

3049 406 1/18

2615.62

3094

3094

AG. 88 - 3094.03

D.S. WETMORE
Phil Wetmore
290A
7.4A
P.H. Wetmore Jr.
2.5A
1.80

15	1	2	3	4	5	6	8	9	10	11	12	13	14
2.794 AC	2.794 AC	2.794 AC	2.794 AC	2.794 AC	2.794 AC	2.794 AC	2.794 AC	2.794 AC	2.794 AC	2.794 AC	2.794 AC	2.794 AC	2.794 AC

MARY HAID 75. A 483/465
S.E. & V. Flick
CARMINE JR. & MARTHA ZARLENGA

E. & I. JONES 18.93 A 494/127 433/565
E.L. & J.B. JONES 3.03 A 498/521
A.J. THOMAS 3.03 A 508/203
J.F. HOBBS 25. A 507/384

A.E.E. CARRERA
E. Jordan
L.S. & J.H. Moore
16.93 A
16.944 A.

ROSE HOBBS 24 A 518/557
John F. Hobbs 532/357

J.F. Hobbs 1A