

CANFIELD TOWN

OFFICE OF COUNTY ENGINEER  
940 BEARS DEN ROAD  
YOUNGSTOWN, OHIO

PT. G. L. DIV.

SCALE 1" = 100'  
4900  
J. PHILLIP RICHLEY  
MAHONING COUNTY ENGINEER  
AND TAX MAP DRAFTSMAN

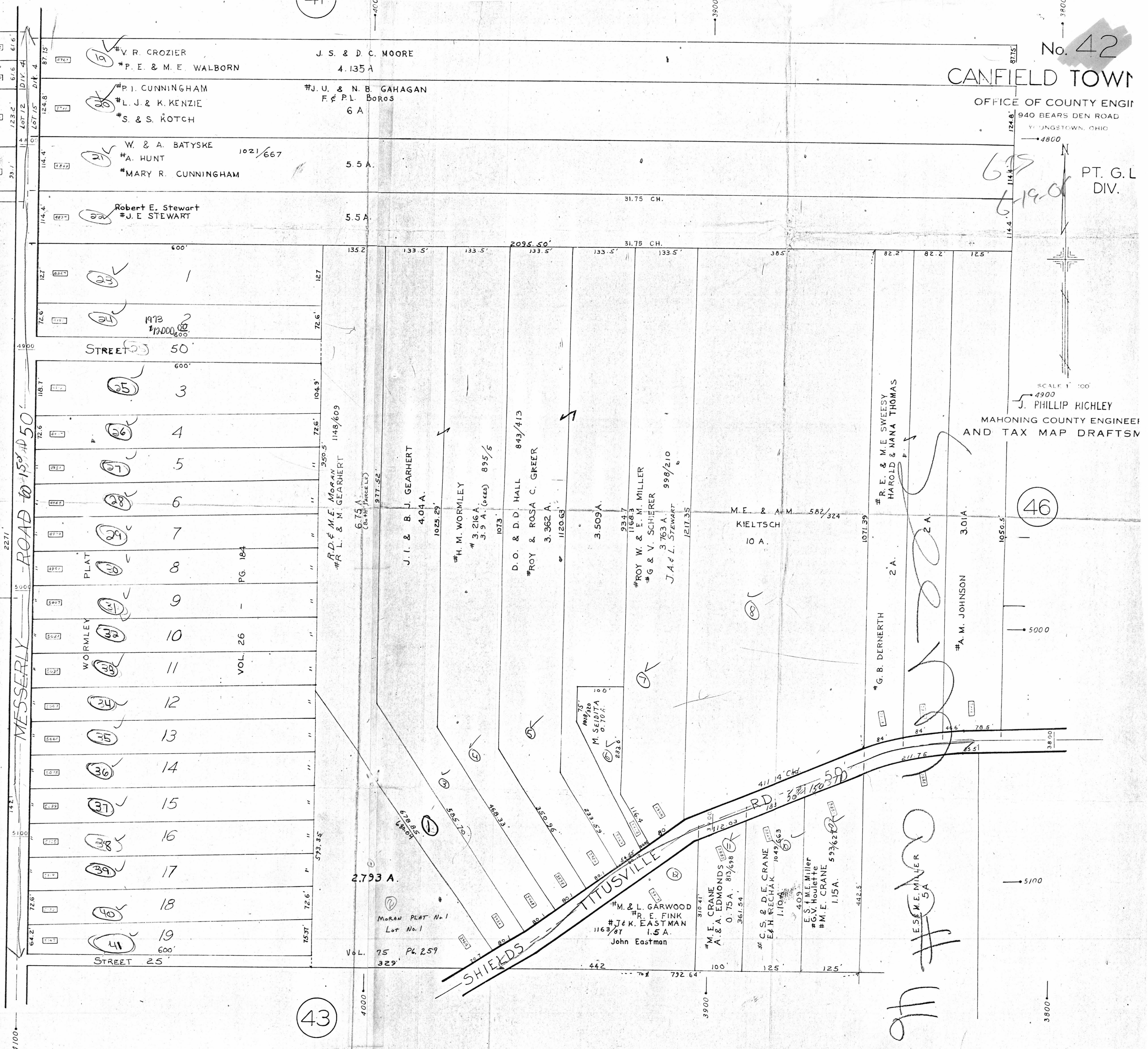
(46)

See map #38  
V.A. & E.H. WILLIAMS  
E & E. DYCE  
J.M. & D. GEARHART  
J.F. & J. FLOCK  
I. J. SIGLE

M.A. & R.E. WORMLEY  
2.77A  
BEARDS LANE  
VACATED COMM. ST. 14, 38, 39, 7-B  
1023.5

#FRED SHUTRUMP, SR  
#E.C. LYNN  
#11160A  
#11440A  
PT. 20, 19 AC  
See map #38

See map #31  
URSULINE NUNS  
PT 9430 AC.



(43)

See map #5A  
E.S. & M.E. MILLER

Handwritten signature