

CANFIELD TOWNSHIP

LOT - 29

DIVISION - 4

SCALE 1 IN. = 200 FT.

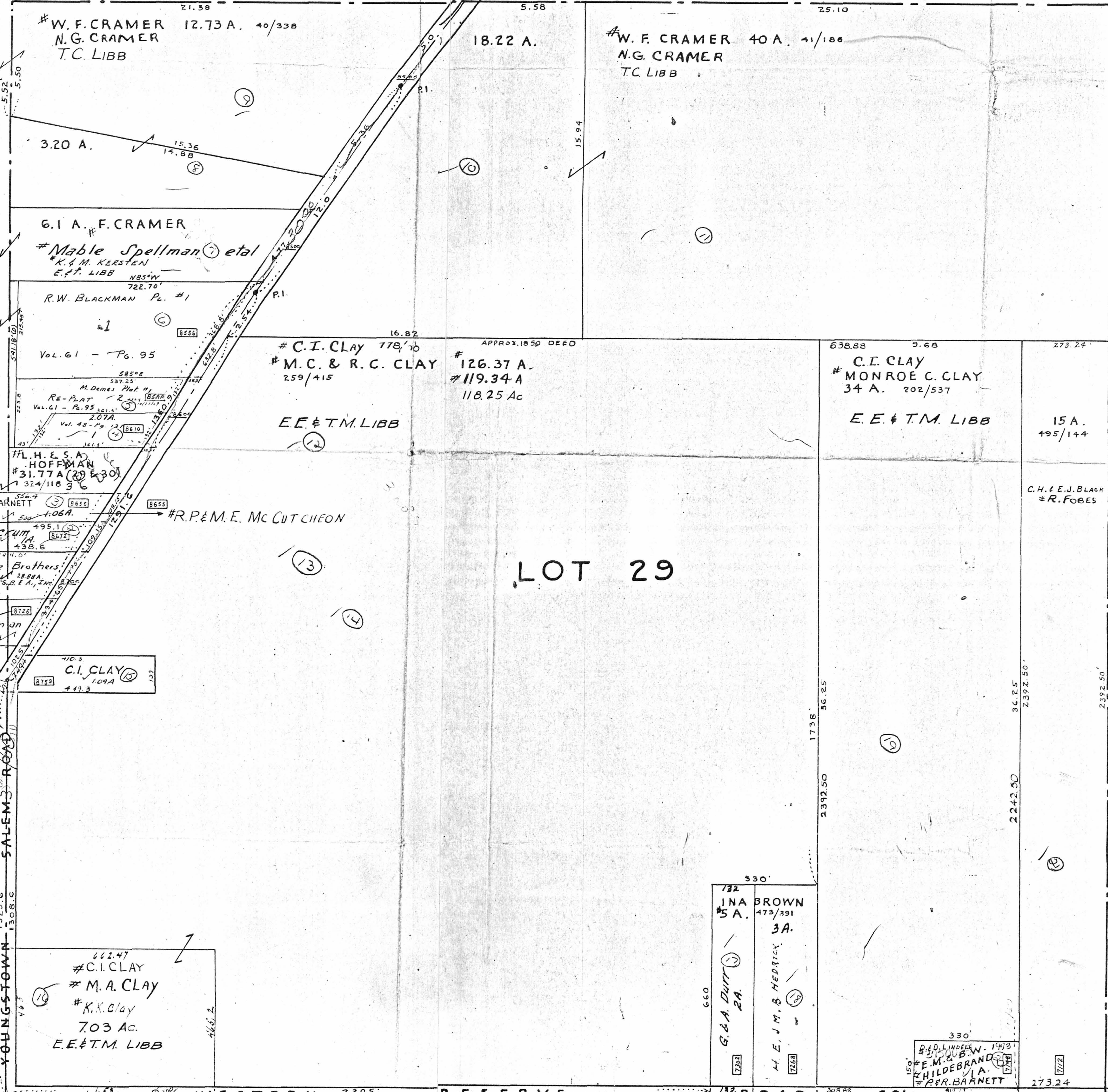
GTS  
6-19-06

LOT 28 DIV. 4 (24)

LOT 30 DIV. 4 (26)

DIV. 4 (28)

LOT 29



# W.F. CRAMER 12.73 A. 40/338  
# N.G. CRAMER  
# T.C. LIBB

18.22 A.

# W.F. CRAMER 40 A. 41/186  
# N.G. CRAMER  
# T.C. LIBB

3.20 A.

6.1 A. # F. CRAMER  
# Mable Spellman et al  
# K.M. KERSTEN  
# E.P. LIBB

R.W. BLACKMAN Pl. #1

Vol. 61 - Pg. 95

# C.I. CLAY 778/70  
# M.C. & R.C. CLAY 259/415  
# 126.37 A.  
# 119.34 A.  
118.25 Ac

# C.I. CLAY  
# MONROE C. CLAY 34 A. 202/537

E.E. & T.M. LIBB

E.E. & T.M. LIBB

# H. H. E. S. A.  
# HOFFMAN  
# 31.77 A. (20/30)  
324/118 3

# R.P. & M.E. MC CUT CHEON

# D.L. & F.G. BARNETT

# G. CUMMA

# Five Brothers

# S.A. HOFFMAN

# C.I. CLAY  
# 109 A.  
447.3

# C.I. CLAY  
# M.A. CLAY  
# K.K. CLAY  
703 Ac.  
E.E. & T.M. LIBB

# I.N.A. BROWN  
# 5 A.  
473/391  
3A.

# G.A. DUTT  
# 2A.  
# H.E. J.M. & HEDRICK

# R.H. LINDEMAN  
# F.M. & B.W.  
# HILDEBRAND  
# V.A.  
# P.R. BARNETT

SALEMS ROAD

WESTERN RESERVE ROAD

GREEN TOWNSHIP

