

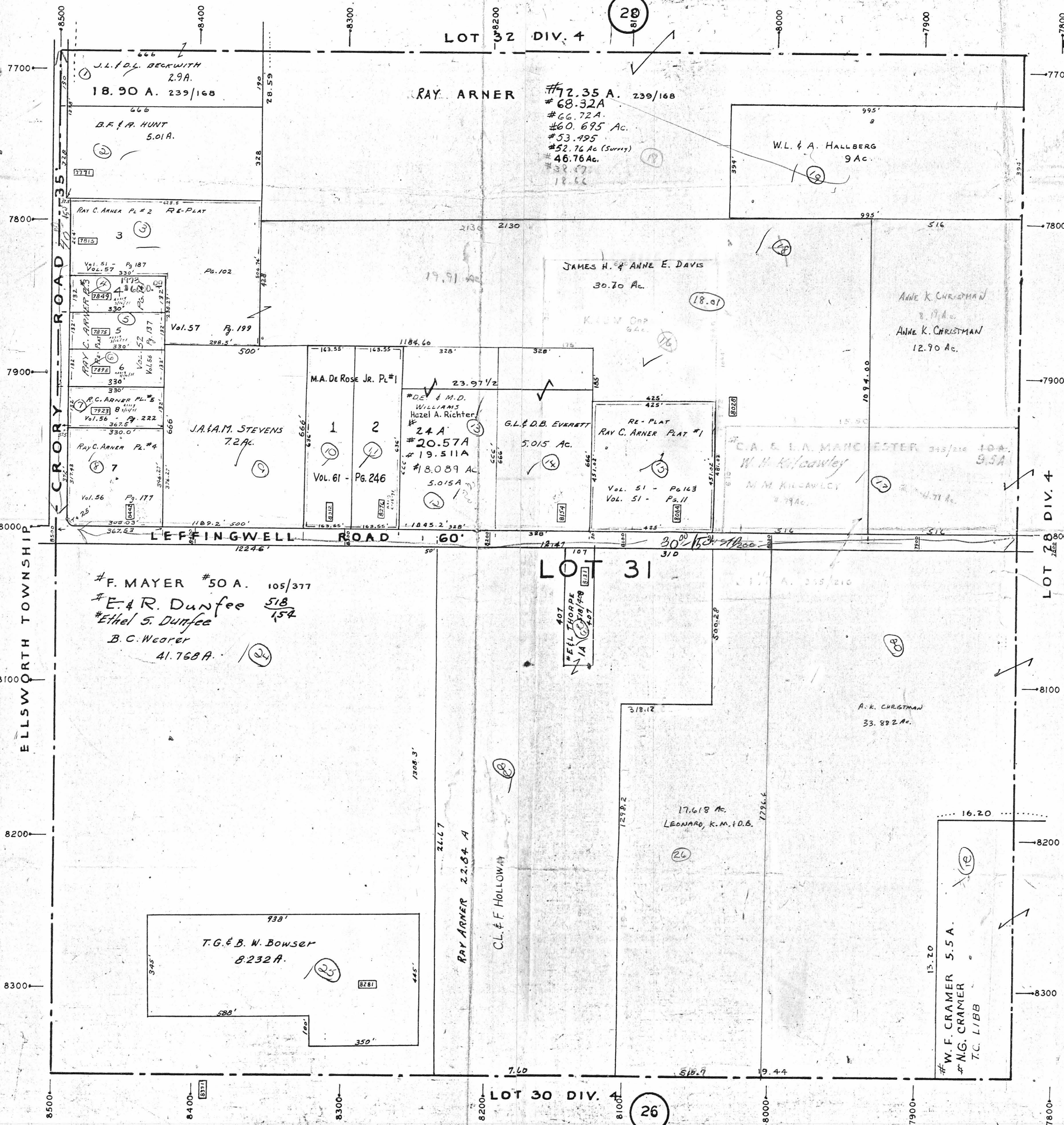
CANFIELD TOWNSHIP

LOT - 31

DIVISION - 4

SCALE 1 IN. = 200 FT.

6-19-06



LOT 32 DIV. 4

28

24

LOT 31

26

LOT 30 DIV. 4

ELLSWORTH TOWNSHIP

LOT 28 DIV. 4

CROBY ROAD

LEFFINGWELL ROAD

RAY ARNER 22.84 A

C.L. & F. HOLLOWAY

W.F. CRAMER 5.5 A.  
N.G. CRAMER  
T.C. LIBB

T.G. & B.W. BOWSER  
8.232 A.

F. MAYER #50 A. 105/377  
E. & R. Dunfee 518/154  
Ethel S. Dunfee  
B.C. Wecker  
41.768 A.

M.A. De Rose Jr. Pl. #1  
#DE & M.D. WILLIAMS  
Hazel A. Richter  
24 A  
#20.57 A  
#19.511 A  
#18.089 A  
5.015 A

JAMES H. & ANNE E. DAVIS  
30.70 Ac.

RAY ARNER

#72.35 A. 239/168  
#68.32 A  
#66.72 A.  
#60.695 Ac.  
#53.495  
#52.76 Ac (Surrey)  
46.76 Ac.  
18.56

W.L. & A. HALLBERG  
9 Ac.

ANNE K. CHRISTMAN  
2.9 A.  
ANNE K. CHRISTMAN  
12.90 Ac.

C.A. & L.A. MARCHESTER 345/216 10A.  
W.H. Kilcawley  
M.M. KILCAWLEY  
4.79 Ac.

LEONARD, K.M. & D.B.  
17.618 Ac.

A.K. CHRISTMAN  
33.882 Ac.

18.90 A. 239/168

D.F. & A. HUNT  
5.01 A.

J.A.M. STEVENS  
7.2 Ac.

1  
2  
Vol. 61 - Pg. 246

G.L. & D.B. EVERETT  
5.015 Ac.

RE-PLAT  
RAY C. ARNER PLAT #1  
Vol. 51 - Pg. 143  
Vol. 51 - Pg. 11

W.H. Kilcawley

W.F. THORPE  
1A  
407

W.F. CRAMER 5.5 A.  
N.G. CRAMER  
T.C. LIBB

T.G. & B.W. BOWSER  
8.232 A.

F. MAYER #50 A. 105/377  
E. & R. Dunfee 518/154  
Ethel S. Dunfee  
B.C. Wecker  
41.768 A.

M.A. De Rose Jr. Pl. #1  
#DE & M.D. WILLIAMS  
Hazel A. Richter  
24 A  
#20.57 A  
#19.511 A  
#18.089 A  
5.015 A

JAMES H. & ANNE E. DAVIS  
30.70 Ac.

RAY ARNER

#72.35 A. 239/168  
#68.32 A  
#66.72 A.  
#60.695 Ac.  
#53.495  
#52.76 Ac (Surrey)  
46.76 Ac.  
18.56

W.L. & A. HALLBERG  
9 Ac.

ANNE K. CHRISTMAN  
2.9 A.  
ANNE K. CHRISTMAN  
12.90 Ac.

C.A. & L.A. MARCHESTER 345/216 10A.  
W.H. Kilcawley  
M.M. KILCAWLEY  
4.79 Ac.

LEONARD, K.M. & D.B.  
17.618 Ac.

A.K. CHRISTMAN  
33.882 Ac.

18.90 A. 239/168

D.F. & A. HUNT  
5.01 A.

J.A.M. STEVENS  
7.2 Ac.

1  
2  
Vol. 61 - Pg. 246

G.L. & D.B. EVERETT  
5.015 Ac.

RE-PLAT  
RAY C. ARNER PLAT #1  
Vol. 51 - Pg. 143  
Vol. 51 - Pg. 11

W.H. Kilcawley

W.F. THORPE  
1A  
407

W.F. CRAMER 5.5 A.  
N.G. CRAMER  
T.C. LIBB

T.G. & B.W. BOWSER  
8.232 A.

F. MAYER #50 A. 105/377  
E. & R. Dunfee 518/154  
Ethel S. Dunfee  
B.C. Wecker  
41.768 A.