

SW

PLATE 21

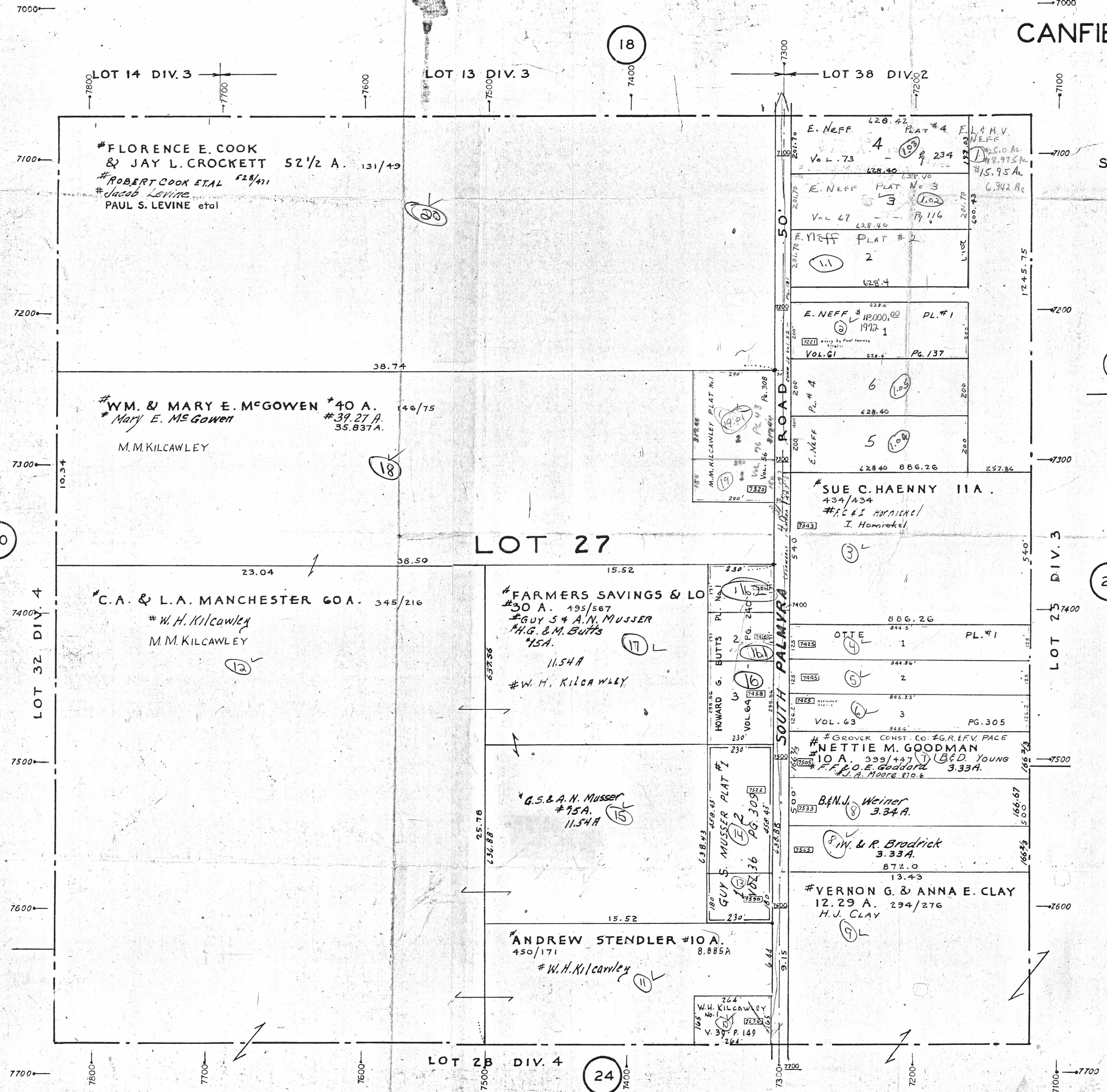
CANFIELD TOWNSHIP

LOT - 27

DIVISION - 4

SCALE 1 IN. = 200 FT.

- LEGEND**
- 44 PLATE NUMBER
 - 4300 HOUSE NUMBERING GRID
 - 4202 HOUSE NUMBER



20

18

22

24

LOT 27

FLORENCE E. COOK
& JAY L. CROCKETT 52 1/2 A. 131/49
ROBERT COOK ETAL 52 1/2 A. 131/49
JACOB LEVINE
PAUL S. LEVINE etal

WM. & MARY E. MCGOWEN 40 A. 146/75
Mary E. McGowen
39.27 A. 35.837A.
M.M. KILCAWLEY

C.A. & L.A. MANCHESTER 60 A. 345/216
W.H. Kilcawley
M.M. KILCAWLEY

FARMERS SAVINGS & LOAN 30 A. 195/567
GUY S & A.N. MUSSER
H.G. & M. BUTTS
15A.
11.54A
W.H. KILCAWLEY

G.S. & A.N. MUSSER
15A.
11.54A

ANDREW STENDLER #10A.
450/171 8.885A
W.H. KILCAWLEY

E. NEFF 428.42 PLAT # 4
VOL. 73 428.42 PL. # 234

E. NEFF PLAT No 3
VOL 47 428.46 PL. # 116

E. NEFF PLAT # 2
VOL. 47 428.46 PL. # 116

E. NEFF # 12000.00 PL. # 1
VOL. 61 428.46 PL. # 137

E. NEFF PL. # 4
VOL. 56 428.46 PL. # 137

E. NEFF PL. # 5
VOL. 56 428.46 PL. # 137

SUE C. HAENNY 11A.
434/434
I. Hornickel
I. Hornickel

OTTE PL. # 1
VOL. 63 844.86 PL. # 1

GROVER CONST. CO. # G.R. & F.V. PACE
NETTIE M. GOODMAN
10 A. 399/447
F.F. & O.E. GODDARD 3.33A.
J.A. MOORE 270.6

NETTIE M. GOODMAN
10 A. 399/447
F.F. & O.E. GODDARD 3.33A.
J.A. MOORE 270.6

B. & N.J. Weiner
3.34A.

W. & R. Brodrick
3.33A.
872.0
13.43

VERNON G. & ANNA E. CLAY
12.29 A. 294/276
H. J. CLAY

W.H. KILCAWLEY
VOL. 39 P. 149