

CANFIELD TOWNSHIP

LOTS-14-15

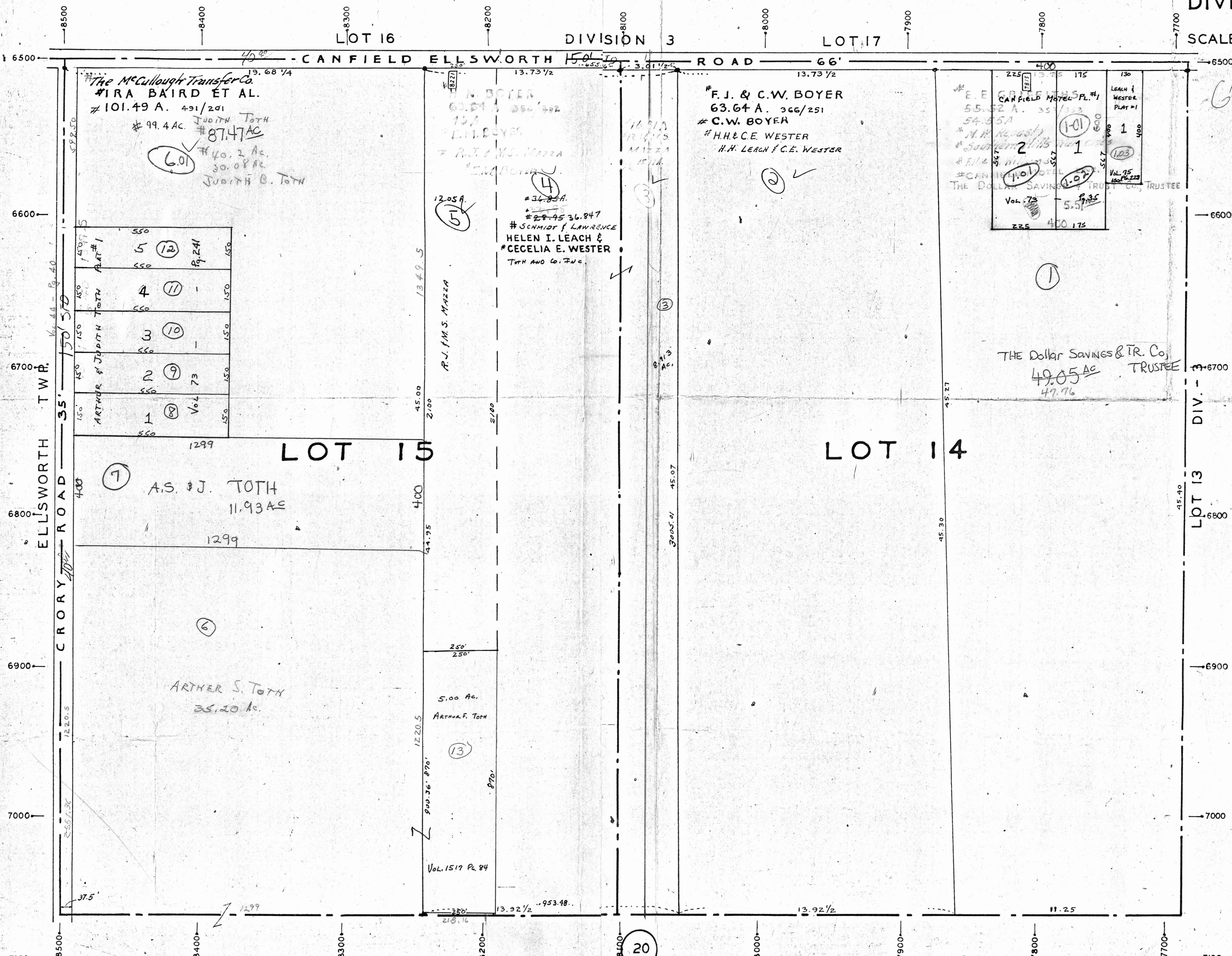
DIVISION - 3

SCALE 1IN. = 200FT.

10

20

18



The McCullough Transfer Co.
 #IRA BAIRD ET AL.
 #101.49 A. 491/201
 #99.4 AC. #87.47 AC
 #40.2 AC. 30.08 AC
 JUDITH B. TOTH

N. BOYER
 63.64 A. 366/251
 C.W. BOYER
 #H.H. & C.E. WESTER
 H.H. LEACH & C.E. WESTER
 #SCHMIDT & LAWRENCE
 HELEN I. LEACH &
 CECELIA E. WESTER
 TOTH AND CO. INC.

F.J. & C.W. BOYER
 63.64 A. 366/251
 C.W. BOYER
 #H.H. & C.E. WESTER
 H.H. LEACH & C.E. WESTER

E. E. GORHAM
 CANFIELD HOTEL PL. #1
 55.52 A. 357/133
 #N.W. KENNEDY
 #SOUTHERN TRUST CO.
 #CANFIELD HOTEL
 THE DOLLAR SAVINGS & TR. CO., TRUSTEE
 Vol. 73 5.57
 225 400 175

550	550	550	550
150 73	150 73	150 73	150 73
150 73	150 73	150 73	150 73
150 73	150 73	150 73	150 73
150 73	150 73	150 73	150 73
150 73	150 73	150 73	150 73
150 73	150 73	150 73	150 73
150 73	150 73	150 73	150 73
150 73	150 73	150 73	150 73
150 73	150 73	150 73	150 73

LOT 15
 AS. & J. TOTH
 11.93 AC
 ARTHUR S. TOTH
 35.20 AC

LOT 14

8500
8400
8300
8200
8100
8000
7900
7800
7700
7600
6500
6600
6700
6800
6900
7000
7100

8500
8400
8300
8200
8100
8000
7900
7800
7700
7600
6500
6600
6700
6800
6900
7000
7100

ELLSWORTH ROAD
 CROY ROAD
 TWP.

LOT 13
 DIV. 3

6-19-06

11.21
64
67.50